

Butter Cream Frosting

By Stephanie Prescott of A Quilter's Dream
Kahuna Batiks by Stephanie Prescott for Fresh Water Desgins



Butter Cream Frosting

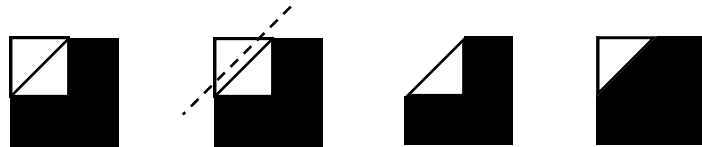
Designed by Stephanie Prescott of A Quilter's Dream
Kahuna Batiks by Stephanie Prescott for Fresh Water Designs

Cutting

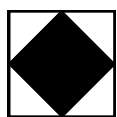
1. From your **Background Color (light) Batik** fabric cut:
(8) 2 inch strips.
From (5) of those 2 inch strips, sub cut into (48) 2 inch squares.
2. From your **Accent Color (dark) Batik** fat quarter fabric cut:
(3) 3 1/2 inch strips
(3) 2 inch strips
From your 3 1/2 inch strips, sub cut into (15) 3 1/2 inch squares.
Put (3) of these squares aside for centers.

Construction

1. Take (4) of your 2 inch background squares. Take (1) of your 3 1/2 inch accent color squares. Place one of the smaller squares right sides together onto the top left corner of the large square. Draw a diagonal line from corner to corner as shown. Sew along drawn line. Cut off excess fabric 1/4 inch above seam line. Press the stitched block open.



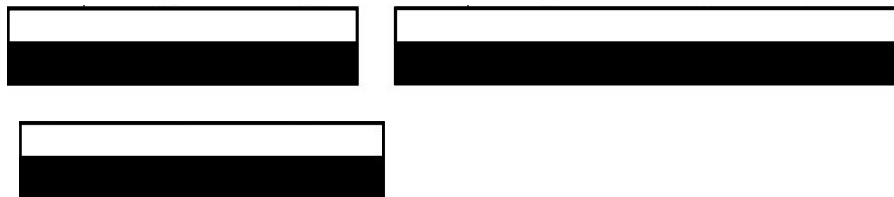
Repeat this process with the other squares on the three other corners so that you have a pieced square in a square block as shown below.



← Square in a square unit

Repeat this process to yield a total of (12) of these square in a square units.

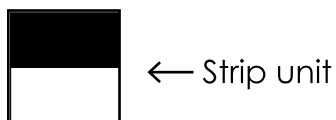
2. Take (3) of your 2 inch accent color strips and (3) of your 2 inch background strips. Sew your accent color strips to your background strips lengthwise.



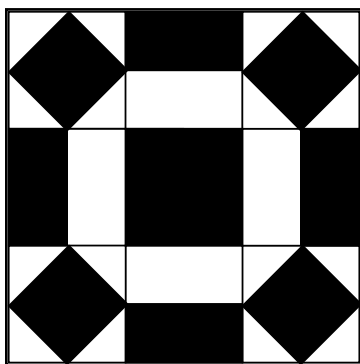
This pattern was designed using an accurate 1/4" seam. Before beginning, please precisely cut (2) 1-1/2" x 5" pieces of fabric. Stitch them together along the 5" edge. Press and measure across them at the midpoint on their width. They should be EXACTLY 2-1/2" across. If not, adjust your stitching and try again until correct.

Construction continued

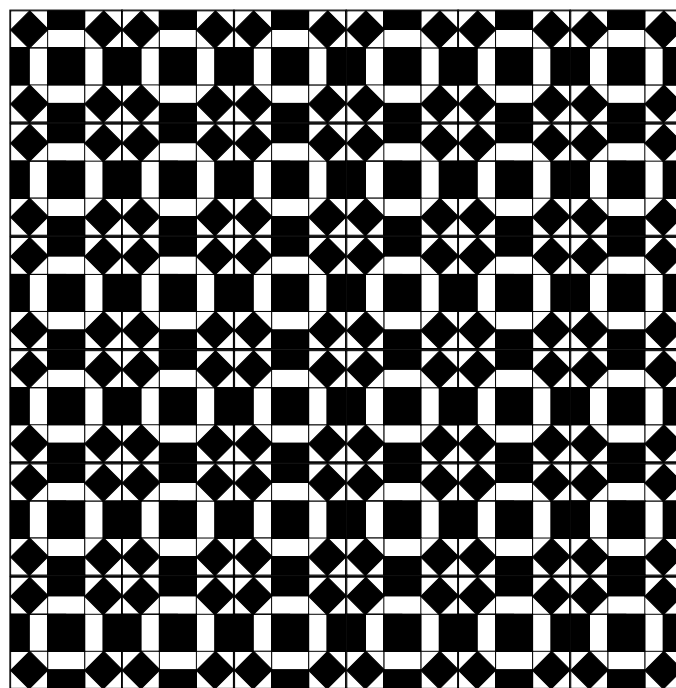
3. Sub cut these sewn strips into (12) 3 1/2 inch squares.



4. Take (4) of the square in a square units, (4) strip units and (1) center square. Place units as shown in block below and sew together. The block should measure 9 1/2 inches by 9 1/2 inches at this point.



5. Repeat step #4 twice more to complete (3) blocks for each pair of fat quarters.
6. Take the next pair of fat quarters and repeat steps #1 through #5. Continue with the remaining paired fat quarters to yield (36) blocks total.
7. Square up all blocks to 9 1/2 inches.
8. The layout for the quilt is 6 blocks per row, 6 rows down.



Additional sizes

Crib

36 x 36
6 fat quarters—background
6 fat quarters—accent
3/8 yard—Binding
1/4 yard—Backing

Lap (shown for this pattern)

54 x 54
3 yards background
12 fat quarters—accent
1/2 yard—Binding
4 yards—Backing (enough for binding too!)

Twin

63 x 81
19 fat quarters—background
19 fat quarters—accent
2/3 yard—Binding
5 1/4 yard—Backing

Queen

81 x 90
30 fat quarters—background
30 fat quarters—accent
3/4 yard—Binding
7 1/2 yards—Backing (pieced horizontally)

Fabric

FWDKAH01-030	Accent Color (dark) Batik	FQ
FWDKAH01-022	Accent Color (dark) Batik	FQ
FWDKAH04-011	Accent Color (dark) Batik	FQ
FWDKAH08-023	Accent Color (dark) Batik	FQ
FWDKAH07-015	Accent Color (dark) Batik	FQ
FWDKAH03-018	Accent Color (dark) Batik	FQ
FWDKAH04-028	Accent Color (dark) Batik	FQ
FWDKAH04-039	Accent Color (dark) Batik	FQ
FWDKAH08-005	Accent Color (dark) Batik	FQ
FWDKAH07-024	Accent Color (dark) Batik	FQ
FWDKAH08-007	Accent Color (dark) Batik	FQ
FWDKAH01-004	Accent Color (dark) Batik	FQ
FWDKAH07-019	Background Color (light) Batik	3 yds
FWDKAH01-025	Binding	1/2 yd
Your Choice	Backing	4 yds



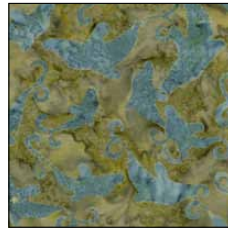
Accent Color (dark) Batiks



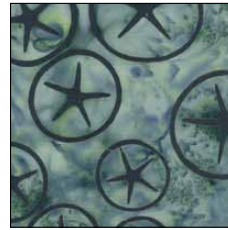
FWDKAH01-030



FWDKAH01-022



FWDKAH08-005



FWDKAH07-024



FWDKAH04-011



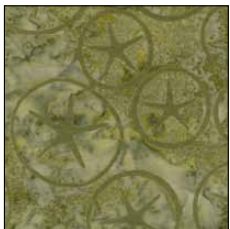
FWDKAH08-023



FWDKAH08-007



FWDKAH01-004



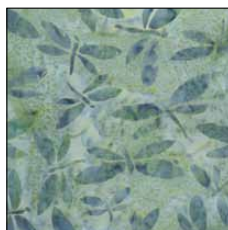
FWDKAH07-015



FWDKAH03-018



FWDKAH04-028



FWDKAH04-039

Background Color (light) Batiks



FWDKAH07-019

Backing



FWDKAH01-025