

A Day on the Farm

by Sandy Lynam Clough™

Projects by Lucy Fazely



Finished size of table runner: approximately 14¼" x 52"



Finished size of placemats: approximately 13½" x 18¼"



Finished size of grocery bag: approximately 12" across x 8" wide x 14" tall

PLACEMAT FABRIC REQUIREMENTS: Makes four placemats.

Yardages are based on 40" wide, unwashed fabric.

A. Pattern #26438 – MUL1	1 1/4 yards
B. Pattern #26441 – MUL1	3/4 yard
C. Pattern #26443 – BE11	1/8 yard
D. Pattern #26443 – BRO1	1 1/4 yards
E. Pattern #26443 – DKGRE1	3/8 yard
F. Pattern #26443 – MDGRE1	1/4 yard
G. Pattern #26443 – RED1	1/2 yard
Batting	four 15" x 20"

CUTTING INSTRUCTIONS:

Please read all instructions carefully before beginning. 1/4" seam allowance is included in measurements and all strips are cut across the width of the fabric unless noted otherwise. Label pieces and keep together until ready to sew. These instructions are based on unwashed fabrics.

A. Pattern #26438 – MUL1 (main pattern):

1. Fussy-cut four flower sections for baskets 3 1/2" x 5 1/2".
2. Cut two 15" x 20" rectangles for backing, piecing if necessary after fussy cutting the flowers.

B. Pattern #26441 – MUL1 (vegetables):

1. Cut one 3 1/2" strip. Sub-cut four 3 1/2" x 5 1/2" pieces.
2. Cut one 15" strip. Sub-cut two 15" x 20" rectangles for backing.

C. Pattern #26443 – BE11 (texture):

1. Cut two 1 1/4" strips. Sub-cut twenty-eight 1 1/4" x 2 3/4" strips.

D. Pattern #26443 – BRO1 (texture):

1. Cut eight 2 1/2" strips for binding.
2. Cut three 2 1/4" strips. Sub-cut eight 2 1/4" x 12" strips.
3. Cut four 1 1/2" strips. Sub-cut eight 1 1/2" x 18 3/4" strips.
4. Cut four 1 1/4" strips. Sub-cut forty-eight 1 1/4" x 2 3/4" strips.

E. Pattern #26443 – DKGRE1 (texture):

1. Cut two 2 3/4" strips. Sub-cut forty 1 1/4" x 2 3/4" strips and twenty-four 1 1/4" x 2" strips.
2. Cut one 1 3/4" strips. Sub-cut four 1 3/4" x 3 1/2" strips.
3. Cut two 1" strips. Sub-cut four 1" x 11 3/4" strips.

F. Pattern #26443 – MDGRE1 (texture):

1. Cut three 1 1/4" strips. Sub-cut twenty 1 1/4" x 2 3/4" strips and twelve 1 1/4" x 2" strips.

G. Pattern #26443 – RED1 (texture):

1. Cut one 2 3/4" strip. Sub-cut eight 2 3/4" squares.
2. Cut two 2 1/4" strips. Sub-cut eight 2 1/4" x 10" strips.
3. Cut four 1 1/2" strips. Sub-cut eight 1 1/2" x 15 1/4" strips.

PIECING INSTRUCTIONS:

A. Basket Sections:

1. Stitch one 1 1/4" x 2 3/4" F strip between two 1 1/4" x 2 3/4" E strips as shown (Figure 1). Press toward E. Make a total of twenty Unit 1 (2 3/4" square).
2. Sew one 1 1/4" x 2 3/4" C strip between two 1 1/4" x 2 3/4" D strips as shown (Figure 2). Press toward D. Make a total of twenty Unit 2 (2 3/4" square).
3. Stitch one 1 1/4" x 2" F strip between two 1 1/4" x 2" E strips as shown (Figure 3). Press toward E. Make a total of twelve Unit 3 (2" x 2 3/4").
4. Sew one C and one D 1 1/4" x 2 3/4" strips together lengthwise (Figure 4). Press toward D. Make a total of eight Unit 4 (2" x 2 3/4").
5. Arrange units in three rows as shown (Figure 5). Stitch into rows. Press toward Unit 1 or Unit 3. Sew rows together. Press seams open. Make a total of four Section 1 (6 1/2" x 11 3/4").



Figure 1 Make 20.



Figure 2 Make 20.



Figure 3 Make 12.



Figure 4 Make 8.

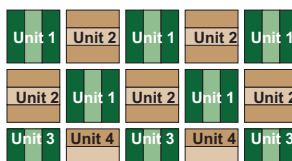


Figure 5 Make 4.

6. Stitch one 1 3/4" x 3 1/2" E strip between two 3 1/2" x 5 1/2" A pieces. Press toward E. Add one 1" x 11 3/4" E strip to bottom (Figure 6). Press toward E. Make a total of two Section 2 (4" x 11 3/4") with A pieces and two with 3 1/2" x 5 1/2" B pieces.

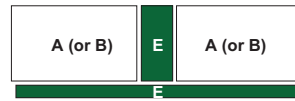


Figure 6 Make 4.

7. Sew one Section 1 below one Section 2 (Figure 7). Press seam open. Make a total of four Basket Sections (10" x 11 3/4" unfinished).

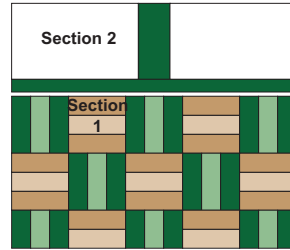


Figure 7 Make 4.

8. Draw a diagonal line across the wrong side of all 2 3/4" G squares (Figure 8).



Figure 8 Make 8.

9. Arrange marked G squares on bottom corners of each Basket Section as shown (Figure 9). Stitch along marked lines. Trim seam allowances to 1/4". Press triangles out.

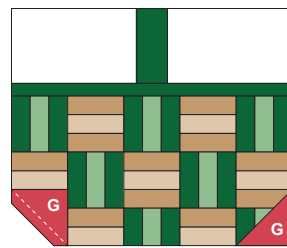


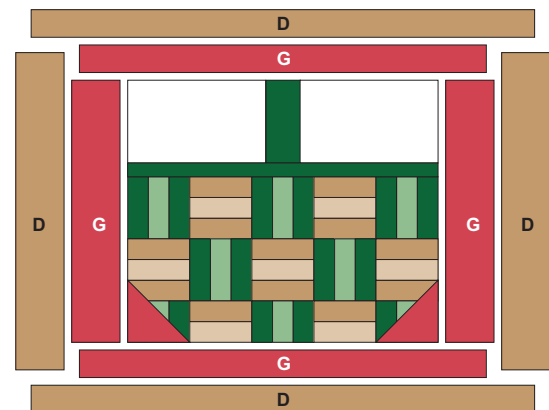
Figure 9 Make 4.

B. Borders (Placemat Diagram)

1. Stitch 2 1/4" x 10" G strips to right and left sides of each Basket Section. Add 1 1/2" x 15 1/4" G strips to top and bottom of each Basket Section. Press toward G strips.
2. Stitch 2 1/4" x 12" D strips to right and left sides of each Basket Section. Add 1 1/2" x 18 3/4" D strips to top and bottom of each Basket Section. Press toward D strips.

C. Finishing

1. Layer a backing right side down, a piece of batting and a placemat right side up. Baste layers together. Quilt as desired. Trim batting and backing even with placemat top. Repeat for each placemat.
2. Make binding and bind edges referring to step 3 of Finishing for runner, using two D binding strips for each placemat.



Placemat Diagram

GROCERY BAG FABRIC REQUIREMENTS:

Yardages are based on 40" wide, unwashed fabric.

- A. Pattern #26441 – MUL1 1 yard
- B. Pattern #26445 – GRE1 3/8 yard
- C. Pattern #26443 – DKGRE1 3/8 yard

Fusible interfacing or fusible fleece 3/8 yard
Additional supplies: 8" x 12" plastic foam board or cardboard, bodkin or large safety pin, fabric stabilizer (optional)

CUTTING INSTRUCTIONS:

Please read all instructions carefully before beginning. 1/4" seam allowance is included in measurements and all strips are cut across the width of the fabric unless noted otherwise. Label pieces and keep together until ready to sew. These instructions are based on unwashed fabrics.

A. Pattern #26441 – MUL1 (vegetables):

1. Cut two 13 1/4" x 16" rectangles for fronts.
2. Cut two 9" x 15 3/4" rectangles for sides
3. Cut one 9 1/4" x 13 1/4" rectangle for bottom.

B. Pattern #26445 – GRE1 (apples):

1. Cut two 9" x 11" rectangles for pockets.

C. Pattern #26443 – DKGRE1 (texture):

1. Cut three 3" strips for handles.

Fusible interfacing or fusible fleece:

1. Cut three 3" strips.

PIECING INSTRUCTIONS:

A. Bag Fronts/Bottom:

1. Hem one shorter edge of both A fronts, both A sides and both B pockets: Fold the top edge down 1/4" to wrong side and press. Fold down again 1" to wrong side and press. Topstitch 1/8" from folded edge to hem (Figure 1). (Add stabilizer in hems if a stiffer bag is desired.)

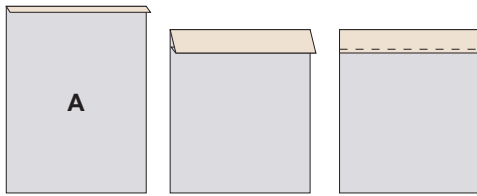


Figure 1

2. Lay a pocket right side up on each of the fronts. Line up the bottom edges with sides of the pocket 2 1/8" in from each side of front. Stitch the side edges of the pocket to each front 1/8" from pocket raw edges (Figure 2).

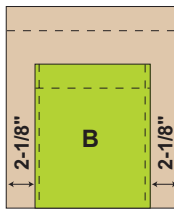


Figure 2

3. Stitch the A bottom piece between the two bottom edges of the front sections with a 1/4" seam (Figure 3). Fold the bottom seams wrong sides together and then stitch with a 3/8" seam to enclose the raw edges of the first seam in a French seam (Figure 3a)

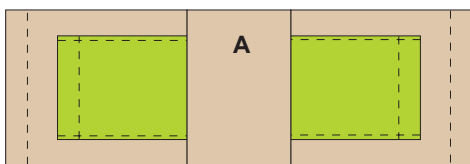


Figure 3

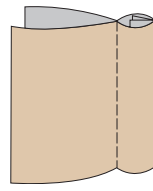


Figure 3a

B. Handles:

1. Press fusible interfacing or fusible fleece to wrong side of 3" x 42" C handle strips.
2. Join the 3" x 42" C handle strips with diagonal seams. Trim the excess to a 1/4" seam allowance. Press seams open and trim "ears" (Figure 4).

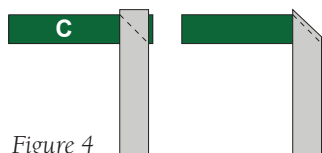


Figure 4

3. Fold the handle strips in half lengthwise with right sides together. Stitch along the long raw edges with a 1/4" seam allowance (Figure 5).



Figure 5

4. Using a bodkin or large safety pin, turn the handle right side out. Press flat so seam runs down the center (Figure 6).



Figure 6

5. Trim the handle to 110" long.
6. Turn 1 end of the handle 1/4" to the inside. Slide the raw end into the folded end. Stitch to join ends. Make sure handle is not twisted (Figure 7).



Figure 7

7. Mark the handle at the halfway mark across from the end seam (Figure 8).

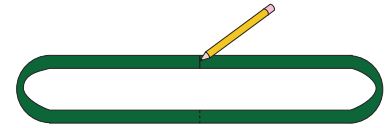


Figure 8

8. Arrange the handle, center seam side down, on the right side of the bag panel. Pin the seam and center point in the center of the bottom piece. Line up outer edges of the handle 1 3/4" from the raw edges of the bag panel, covering the raw edges of the pockets (Figure 9).

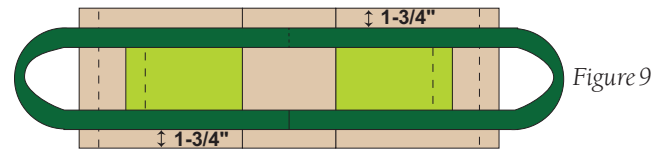


Figure 9

9. Topstitch around the handle twice 1/8" from each edge. Backstitch at the top edges of each pocket to reinforce the seam (Figure 10).

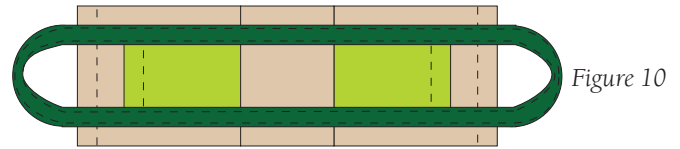


Figure 10

10. Reinforce each handle where it is attached to the hem at each end of the bag panel as shown (Figure 11).

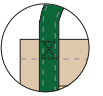


Figure 11

C. Side Seams

1. Stitch the side pieces to the front panels with a 1/4" seam with right sides together. Match the hemmed top edges and stop stitching at the bottom seam (Figure 12).
2. With right sides together, sew the side of bottom piece to the bottom of each side panel. Ease the pieces into the seam, if necessary, to reduce puckering. (Figure 13). Turn right side out.
3. Enclose the side seams with a French seam. It will seem awkward to stitch over the encased seams. Do your best to straighten the fabric as you sew.
4. Enclose the bottom side seams with a French seam.

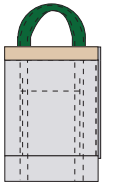


Figure 12

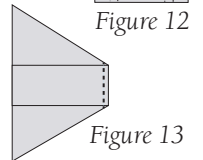


Figure 13

D. Finishing

1. Trim the foam board/cardboard to fit the bottom of the bag. Insert into the bag.

NOTE: Spray starch can be used to stiffen the bag. Follow spray starch manufacturer's instructions.

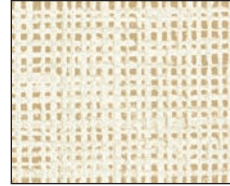
A Day on the Farm fabric:



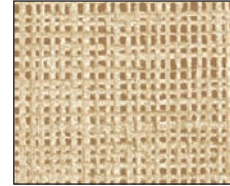
26438 – MUL1



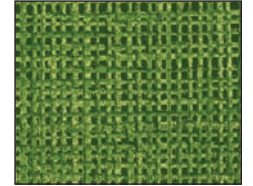
26441 – MUL1



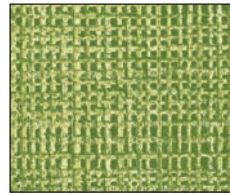
26443 – BEI1



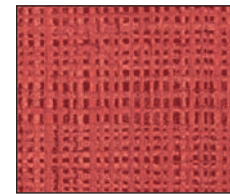
26443 – BRO1



26443 – DKGRE1



26443 – MDGRE1



26443 – RED1



26445 – GRE1

