

# A Day At The Lake

By Laura Marshall

Full Quilt: 74" x 86"



**Bonus Project**  
18" Square Pillow



# A Day at the Lake

Please read all instructions carefully AND identify all fabrics before beginning.

All instructions include a 1/4" seam allowance and strips are cut selvage to selvage, unless stated otherwise.

## 1. Cut the following:


**Fabric A** - Fussy cut (2) 1-1/2" x 18-1/2" stripe strips from selvage edges of panel (pillow)  
*PLEASE NOTE: Panels do not always print the size intended. For this pattern, panels have a coping border added then trimmed so they will fit the quilt correctly.*

Fussy cut 1/4" beyond outside edges of 4 panels to approximately 11-1/2" x 16-1/2"


**Fabric B** - Referring to the quilt image, fussy cut strips, the length of fabric parallel to selvage: (2) 9-1/2" x 54-1/2" multi-stripe borders (1 border with paddle stripe on top, 1 border with paddle stripe on bottom)  
 Cut (3) 3-1/2" x 54-1/2" paddle strips, sewn together end to end matching design as much as possible then cut into (2) 3-1/2" x 72-1/2" borders  
 Cut (3) 6" x 18-1/2" blue stripe pieces (pillow)

**Fabric C** - Cut (1) 6-1/2" strip, subcut (1) 6-1/2" square and (2) 3-1/2" x 12-1/2" strips  
 Cut (2) 3-1/2" strips, subcut (6) 3-1/2" x 12-1/2" strips


**Fabric D** - Cut (3) 3-1/2" strips, subcut (8) 3-1/2" x 12-1/2" strips

**Fabric E** - Cut (1) 7-1/4" strip, subcut (1) 7-1/4" square then cut in half diagonally twice  for 4 triangles  
 Cut remaining 7-1/4" strip into (2) 3-1/2" strips, subcut (16) 3-1/2" squares  
 Cut (1) 3-1/2" strip, subcut (12) 3-1/2" squares

**Fabric F** - Cut (2) 3-1/2" strips, subcut (8) 3-1/2" x 6-1/2" strips and (4) 3-1/2" squares  
 Cut (9) 2-1/2" strips (binding)

**Fabric G** - Cut (1) 7-1/4" strip, subcut (1) 7-1/4" square then cut in half diagonally twice  for 4 triangles  
 Cut remaining 7-1/4" strip into (2) 3-1/2" strips, subcut (8) 3-1/2" x 6-1/2" strips  
 Cut (1) 3-1/2" strip, subcut (8) 3-1/2" squares

**Fabric H** - Cut (3) 3-1/2" strips, subcut (6) 3-1/2" x 18-1/2" strips

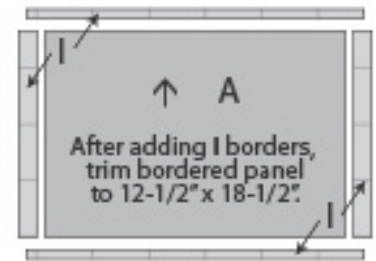
**Fabric I** - Cut (1) 6-7/8" strip, subcut (2) 6-7/8" squares then cut in half diagonally  **only as shown** for 4 triangles

Cut remaining 6-7/8" strip into (3) 1-3/4" strips, subcut (6) 1-3/4" x 11-3/4" strips  
 Cut (3) 3-1/2" strips, subcut (2) 3-1/2" x 18-1/2" strips and (24) 3-1/2" squares  
 Cut (8) 3-1/2" strips, sewn together end to end and cut into (2) 3-1/2" x 80-1/2" and (2) 3-1/2" x 74-1/2" borders  
 Cut (1) 1-3/4" strip, subcut (2) 1-3/4" x 11-3/4" strips  
 Cut (4) 1-1/4" strips, subcut (8) 1-1/4" x 19" strips

**Fabric J** - Cut (7) 4-1/2" strips, sewn together end to end and cut into (2) 4-1/2" x 72-1/2" and (2) 4-1/2" x 68-1/2" borders

## 2. Piecing Order for Quilt:

1. Stitch **Fabric I** 1-3/4" x 11-3/4" strips to sides of a **Fabric A** panel. Trim strip ends even. Add 1-1/4" x 19" **Fabric I** strips to top and bottom of panel. **Trim bordered panel to 12-1/2" x 18-1/2"** (unfinished). Make a total of 4 Unit 1.



Unit 1 - Make 4

Arrows and stripes indicate orientation of directional prints.

2. Sew 3-1/2" x 18-1/2" strips to top and bottom of each Unit 1 using fabrics indicated for 1 each **Blocks 1a** and **1b** and 2 **Block 1c** (18-1/2" square unfinished).



Unit 1a - Make 1



Unit 1b - Make 1



Unit 1c - Make 2

3. Arrange 2 each **Fabrics E** and **I** 3-1/2" squares in 2 rows. Stitch into rows. Sew rows together. Make a total of 4 Unit 2 (6-1/2" square unfinished).



Unit 2 - Make 4

# A Day at the Lake

4. Arrange 2 each **Fabrics E** and **I** 3-1/2" squares, 2 each **Fabrics F** and **G** 3-1/2" x 6-1/2" strips, and 1 Unit 2 in 3 rows. Stitch into rows. Sew rows together. Make a total of 4 Unit 3 (12-1/2" square unfinished).



5. Arrange 2 each **Fabrics E** and **I** 3-1/2" squares, 2 each **Fabrics C** and **D** 3-1/2" x 12-1/2" strips, and 1 Unit 3 in 3 rows. Stitch into rows. Sew rows together. Make a total of 4 **Block 2** (18-1/2" square unfinished).



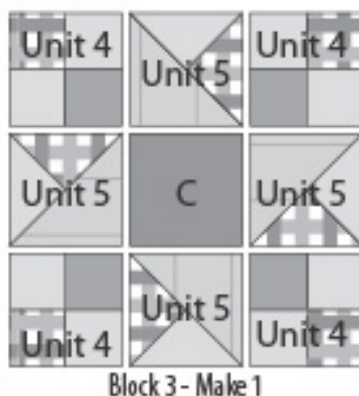
6. Arrange 2 **Fabric G** and 1 each **Fabrics E** and **F** 3-1/2" squares in 2 rows. Stitch into rows. Sew rows together. Make a total of 4 Unit 4 (6-1/2" square unfinished).



7. Stitch 1 each **Fabrics E** and **G** 7-1/4" triangles together as shown. Add a **Fabric I** 6-7/8" triangle as shown. Make a total of 4 Unit 5 (6-1/2" square unfinished).



8. Arrange a **Fabric C** 6-1/2" square and 4 each Units 4 and 5 in 3 rows. Stitch into rows. Sew rows together to complete **Block 3** (18-1/2" square unfinished).



9. Refer to Quilt Layout (Page 3) for arrangement and placement of blocks and borders.

10. Arrange blocks in 3 rows. Stitch into rows. Sew rows together completing quilt center (54-1/2" square unfinished).

11. Sew **Fabric B** 9-1/2" x 54-1/2" borders to top and bottom of quilt center. Add **Fabric B** 3-1/2" x 72-1/2" borders to right and left sides of quilt center.

12. Sew **Fabric J** 4-1/2" x 72-1/2" borders to right and left sides of quilt. Add **Fabric J** 4-1/2" x 68-1/2" borders to top and bottom of quilt.

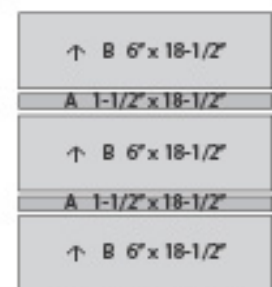
13. Sew **Fabric I** 3-1/2" x 80-1/2" borders to right and left sides of quilt. Add **Fabric I** 3-1/2" x 74-1/2" borders to top and bottom of quilt.

14. The quilt measures approximately 74-1/2" x 86-1/2" (unfinished). Make backing (**Fabric K**) approximately 8" larger than the top.

15. Layer and baste top, batting, and backing together. Quilt as desired. Attach binding (**Fabric F**) and enjoy!!

## 3. Piecing Order for Pillow:

1. Sew **Fabric A** 1-1/2" x 18-1/2" strips lengthwise together with **Fabric B** 6" x 18-1/2" strips, alternating fabrics. Trim pillow top to 18-1/2" square unfinished).



2. Line pillow top with a piece of quilt batting a little larger than the top. Quilt as desired. Trim excess batting.

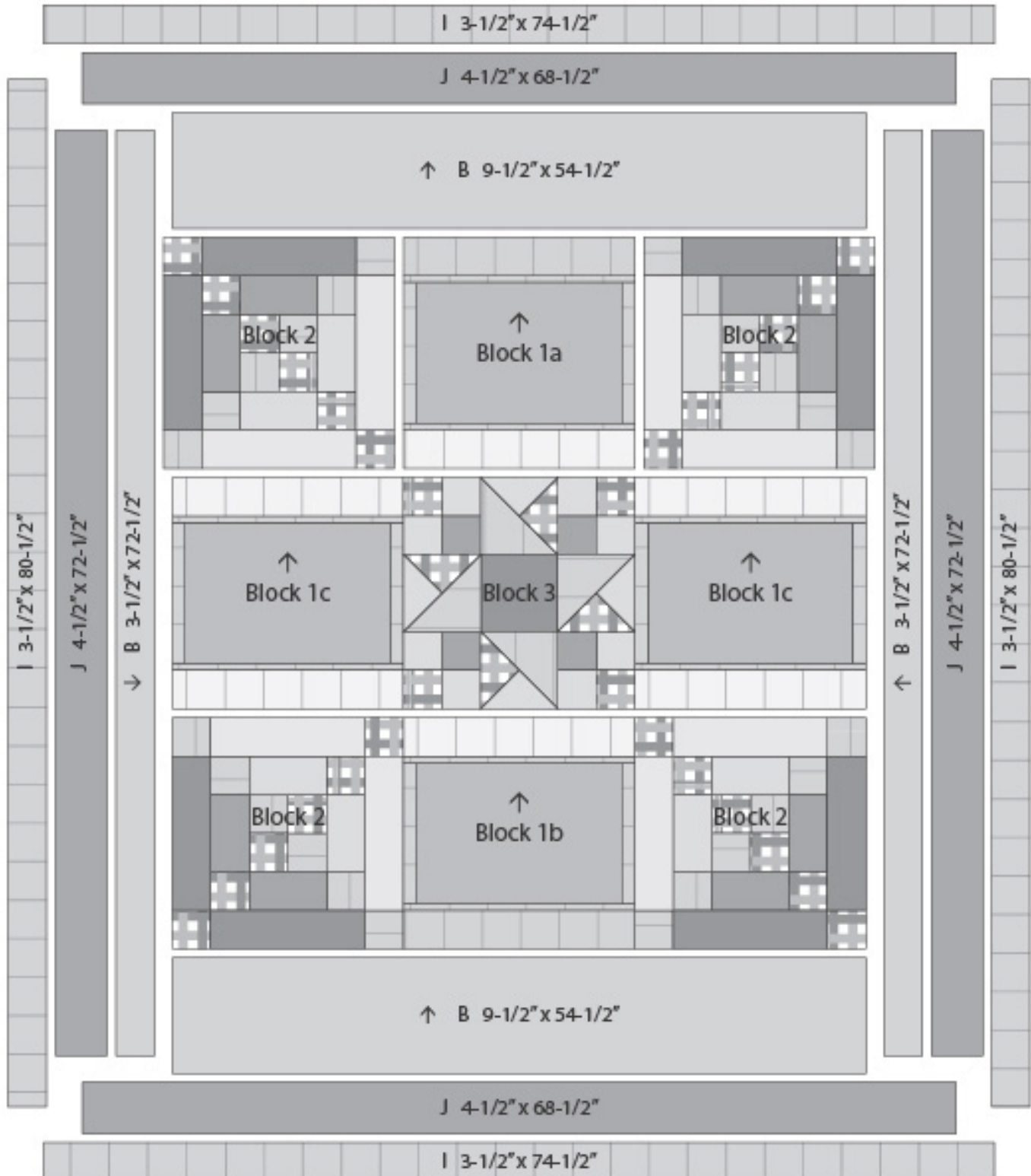
3. Cut pillow back (**Fabric K**) 18-1/2" square. Place pillow top and back right sides together with all edges even. Sew around all sides, leaving a 10" opening on one side. Turn right sides out. Insert an 18" pillow form. Hand stitch the opening closed.

# A Day at the Lake

## QUILT LAYOUT

Border measurements are the cut size.

Arrows and stripes indicate orientation of directional prints.



# A Day At The Lake

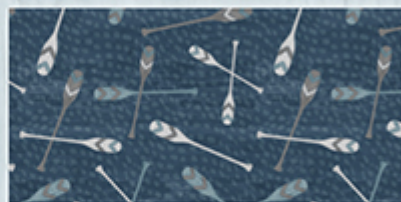
By Laura  
Marshall



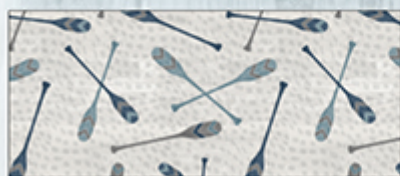
Fabric A 3019-59101-949  
2/3 yd. (1 Panel)



Fabric B  
3019-59102-449  
1 3/4 yds.



Fabric C  
3019-59104-449  
1/2 yd.



Fabric D  
3019-59104-949  
1/2 yd.



Fabric E  
3019-59105-949  
1/2 yd.



Fabric F  
3019-59106-494  
1 1/8 yds. (incl. binding)



Fabric G  
3019-59106-949  
1/2 yd.



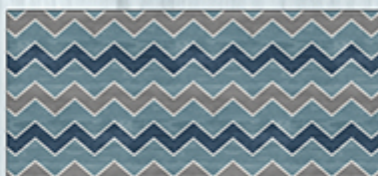
Fabric H  
3019-59109-199  
1/2 yd.



Fabric I  
3019-59109-441  
1 7/8 yds.



Fabric J  
3019-59103-414  
1 1/8 yds.



Fabric K  
3019-59107-419  
5 7/8 yds.  
(backing only - incl. pillow)

OR



Fabric K  
1009-4727-999  
2 1/2 yds. (backing only)

