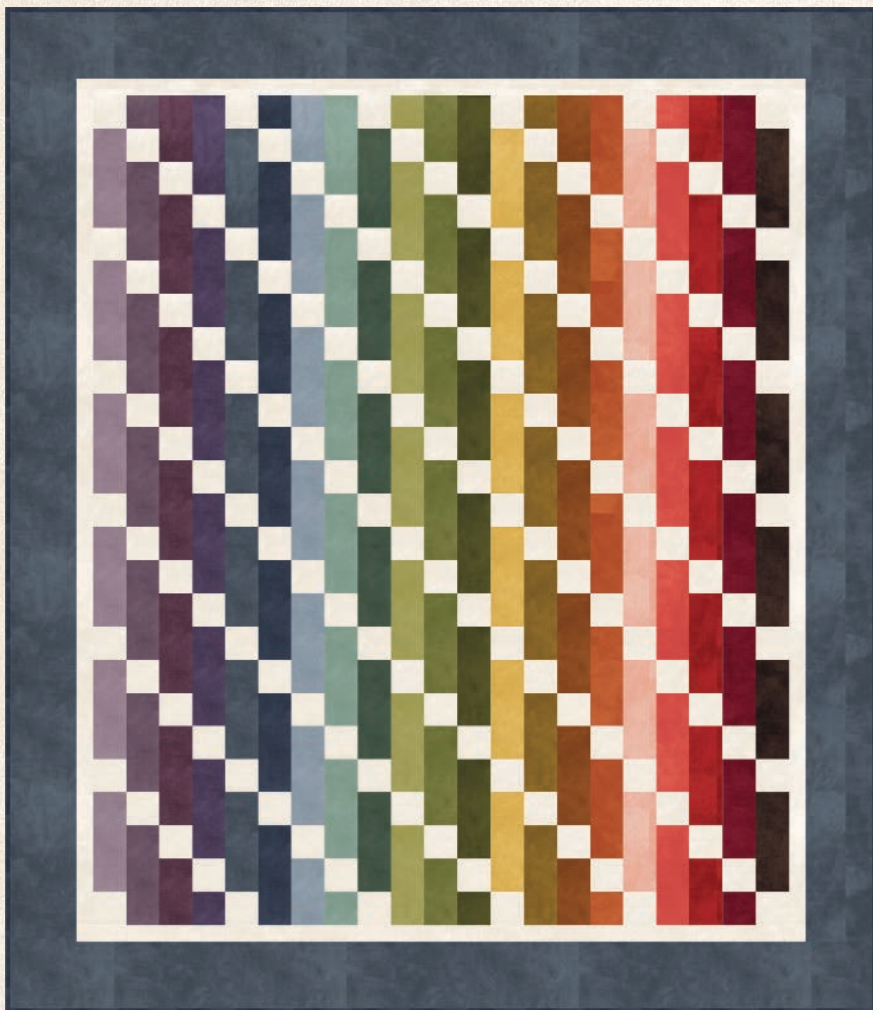


MAYWOOD  STUDIO

# CASCADE FLANNEL QUILT



## Cascade Flannel Quilt

Featuring Color Wash Woolies Flannel by Bonnie Sullivan from Maywood Studio  
Precut-Friendly

**52" x 60"**

[maywoodstudio.com](http://maywoodstudio.com)

# COLORWASH

## Woolies Flannel

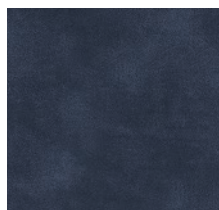
by Bonnie Sullivan



Fabric 1  
F9200-E



Fabric 2  
F9200-B



Binding  
F9200-N



\*Color Wash Woolies  
Flannel 2-1/2" Strips

### Color Wash Woolies Flannel 2-1/2" Strips

You will use one each of the strips below. Please read the notes and tips below.



**Note:** This is the order of your strips on the roll. The order they are used in the quilt is different.

**Tip:** Unroll all strips before starting and organize them by Column A, B, and C. This will be helpful when cutting and piecing this project.

**Extra Strips:** There are 7 colors that are not used for this quilt and several duplicates in the roll. Use those for a fun pieced back for your quilt or save them for another project.

MAYWOOD  STUDIO

Maywood Studio makes every effort to make sure our patterns are accurate.  
Check for updates at [maywoodstudio.com/projects](http://maywoodstudio.com/projects)

## Fabric Requirements

Fabric 1	F2900-E	1 yard
Fabric 2	F2900-B	1 yard
Fabric 3	F2900-N	1/2 yard
Strip Roll	ST-MASCOLW	1
Backing	3-1/2 yards	

## Cutting

### Fabric 1

Cut (9) strips 2-1/2" x WOF into:  
A: (132) 2-1/2" squares

Cut (5) 1-1/2" x WOF strips.  
Sew together end to end and cut into:  
Inner Borders  
(2) 1-1/2" x 44-1/2" top/bottom  
(2) 1-1/2" x 50-1/2" sides

### Fabric 2

Cut (6) 4-1/2" x WOF strips.  
Sew together end to end and cut into:  
(4) 4-1/2" x 52-1/2" outer borders

### Binding

Cut (6) 2-1/2" x WOF strips

### From the Strip Roll cut the following:

#### Column A Fabrics

V3, B, Q4, S3, P, AJ  
From each 2-1/2" strip cut  
(6) 2-1/2" x 6-1/2" rectangles

#### Column B Fabrics

V4, N, GS, S, R2  
VB, Q2, G5, O2, M  
From each 2-1/2" strip cut  
(1) 2-1/2" x 2-1/2" square  
(6) 2-1/2" x 6-1/2" rectangles

#### Column C Fabrics

V, B2, G4, O, R  
From each 2-1/2" strip cut  
(2) 2-1/2" x 4-1/2" rectangles  
(5) 2-1/2" x 6-1/2" rectangles

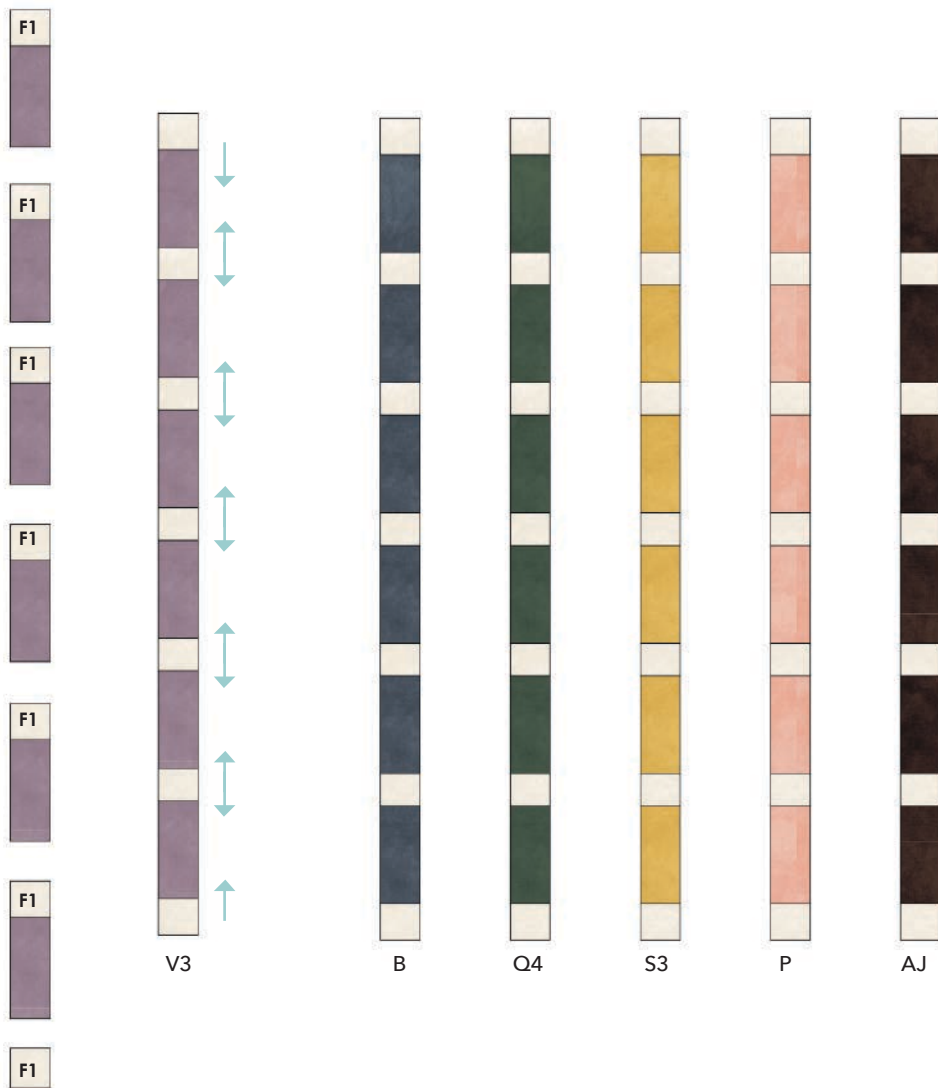
WOF - Width of Fabric  
LOF - Length of Fabric  
RST - Right Sides Together  
HST - Half Square Triangle

## Cascade Flannel Quilt Instructions

Please read all instructions before you begin. Seam allowance is 1/4. Fabric is abbreviated as 'F' - for example, F1 refers to Fabric 1. Press in the direction of the arrows.

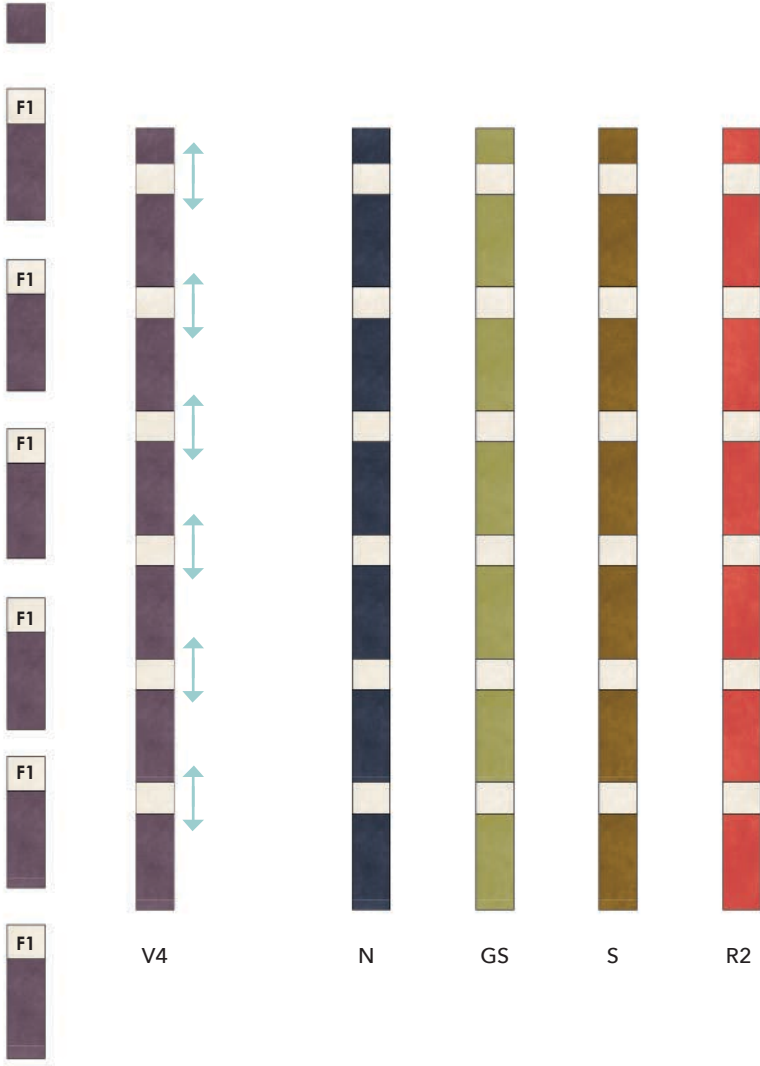
### Column A

1. Gather ( 42 ) F1 squares and (6) each of the 2-1/2" x 6-1/2" V3, B, Q4, S3, P, AJ rectangles.
2. Sew into column A as illustrated below. Make one of each. Press away from F1 squares.



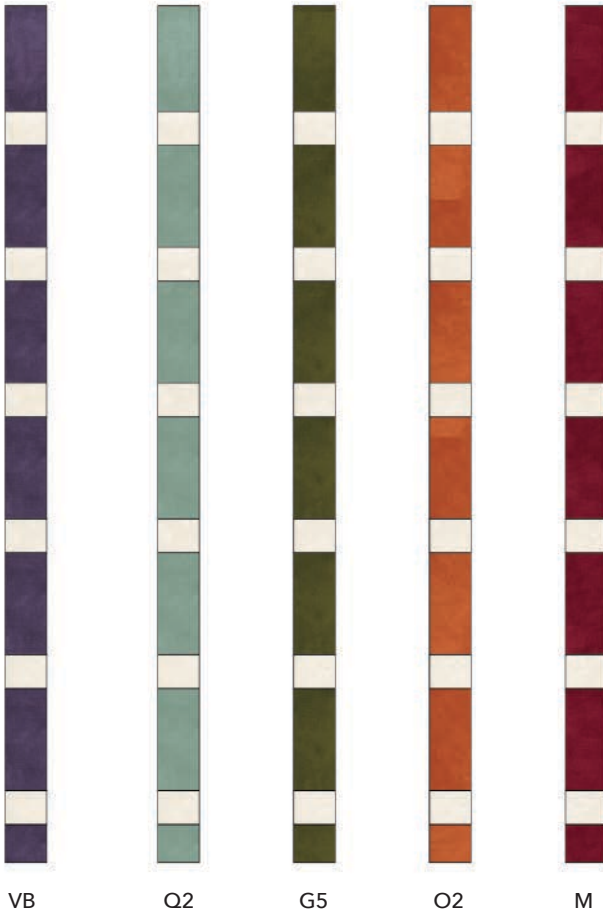
**Column B (continued on p.6)**

1. Gather (30) F1 squares and (6) each of the 2-1/2" x 6-1/2" V3, B, Q4, S3, P, AJ rectangles and (1) each of the 2-1/2" x 2-1/2" VB, Q@, G5, O2, and M squares.
2. Sew into column B as illustrated below. Make one of each. Press away from F1 squares.



**Column B** continued \*This is the same as p.5 with the colorful 2-1/2" square at the bottom of the column instead of at the top.

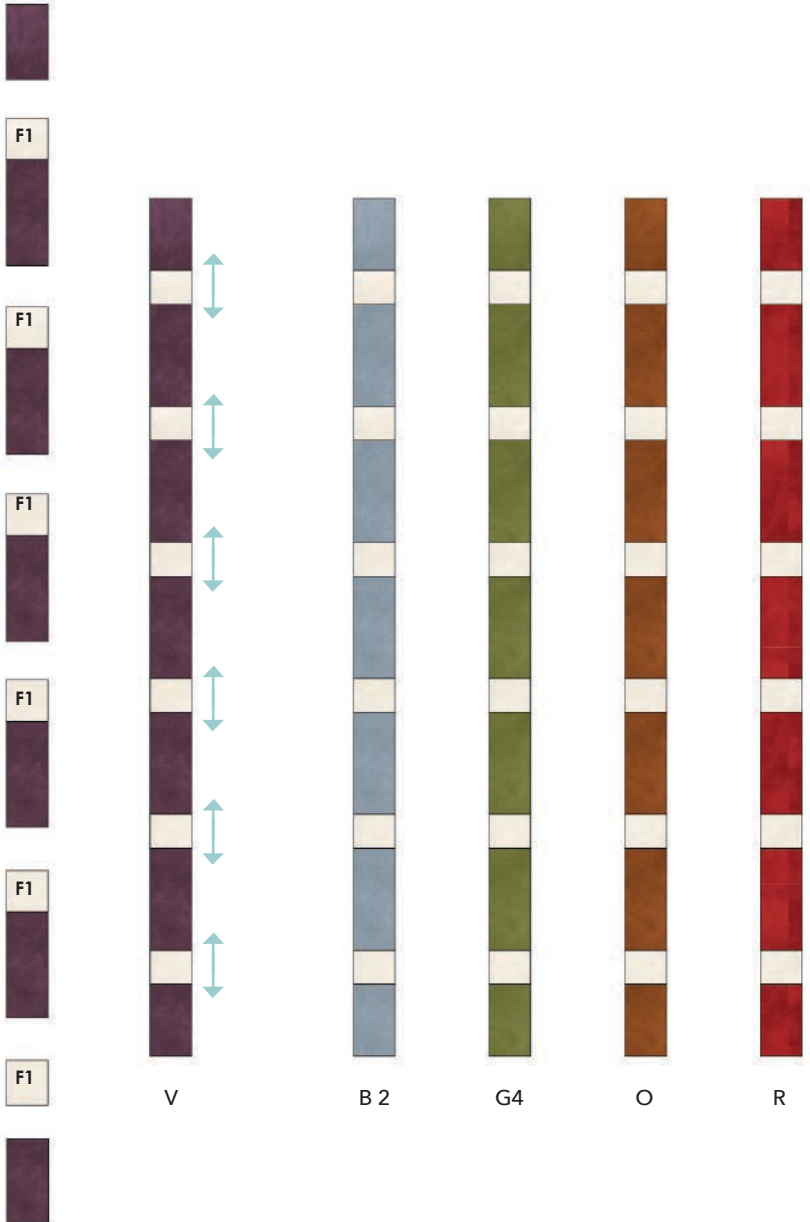
1. Gather (30) F1 squares, (6) each of the 2-1/2" x 6-1/2" VB, Q2, G5, O2, M rectangles, and (1) each of the 2-1/2" x 2-1/2" VB, Q2, G5, O2, M squares.
2. Sew into column B as illustrated below. Make one of each. Press away from F1 squares.



### Column C

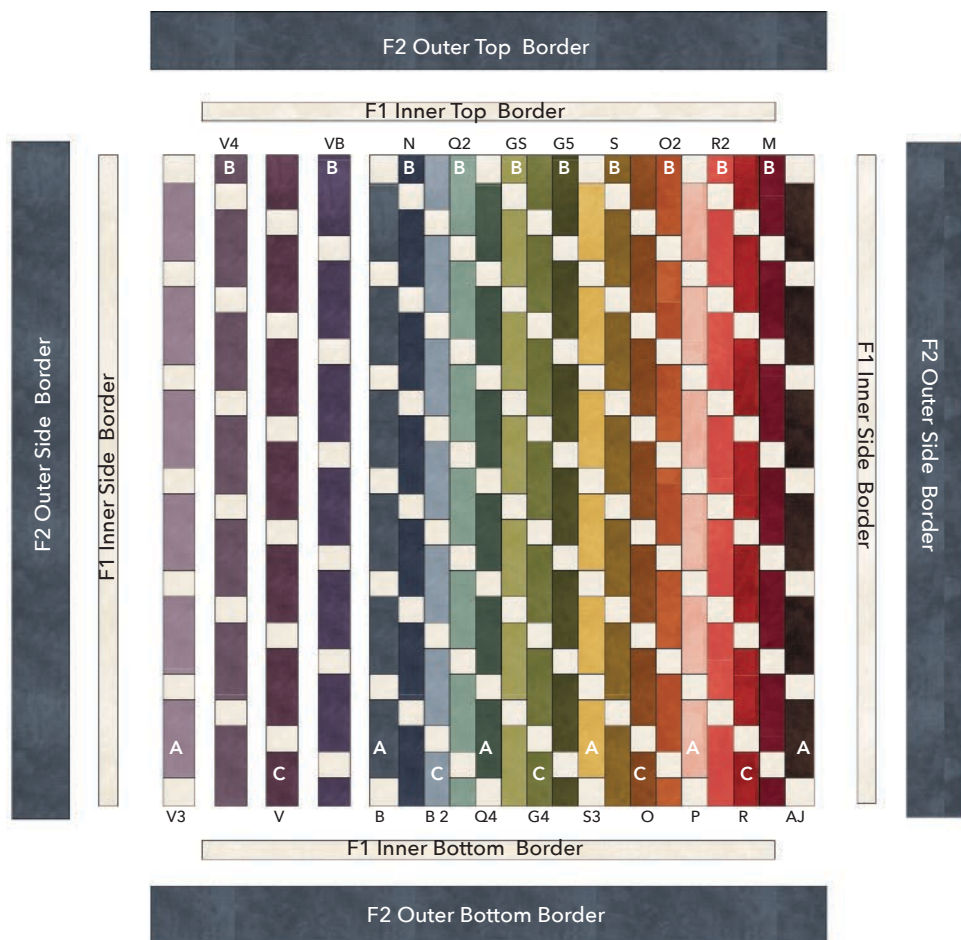
1. Gather (30) F1 squares, (5) each of the 2-1/2" x 6-1/2" V, B2, G4, O, R rectangles, and (2) each of the 2-1/2" x 4-1/2" V, B2, G4, O, R rectangles .

2. Sew into column C as illustrated below. Make one of each. Press away from F1 squares.



## Top Assembly

1. Sew the columns together in A-B-C-B ending with an A column. Arrange the fabrics as illustrated below.
2. Sew F1 inner side borders to the quilt top. Press towards the border.
3. Sew F1 inner top and bottom borders to the quilt top. Press towards the border.
4. Sew the F2 outer side borders to the quilt top. Press towards the outer border.
5. Sew the F2 outer top and bottom borders to the quilt top. Press towards the outer border.



## Finishing

1. Layer the backing (wrong side up), batting and quilt top (right side up). Baste layers to secure. Quilt as desired. Trim the excess backing and batting.
2. Sew the binding strips together into one continuous strip. Press in half length-wise. Sew the binding to the quilt top with a 1/4" seam allowance. Turn the binding to the back side of the quilt and stitch down by hand with matching thread.