

3023

Buzzin' with my Gnome-iez

By Susan Winget



Extra Large Throw Quilt 64-1/2" x 73-1/2"



www.wilmingtonprints.com

Wilmington Prints: A World of Possibilities

Buzzin' with my Gnome-iezz

Please read all instructions carefully AND identify all fabrics before beginning.

All instructions include a 1/4" seam allowance and strips are cut selvage to selvage, unless stated otherwise.

1. Cut the following:

Fabric A - PLEASE NOTE: Panels do not always print the size intended. For this pattern, the panel has a coping border added then trimmed so the panel will fit the quilt correctly.

Fussy cut 1/4" beyond outside edges of two panels to approximately 42" x 47-1/2"

Fabric B - Referring to the quilt image, fussy cut strips, the length of fabric parallel to selvage: (2) 8-3/4" x 79" and (2) 8-3/4" x 71" multi-stripe borders

Fabric C - Cut (8) 2-1/2" strips (binding)
Cut (6) 1-1/2" strips, sewn together end to end and cut into (2) 1-1/2" x 57-1/2" and (2) 1-1/2" x 48-1/2" flat piping strips

Fabric D - Cut (3) 3-1/2" strips, sewn together end to end and cut into (2) 3-1/2" x 48-1/2" borders and (1) 2-1/2" x 24" strip
Cut (2) 2-1/2" strips, sewn together end to end with the (1) 2-1/2" x 24" strip and cut into (2) 2-1/2" x 51-1/2" borders

Fabric E - Cut (3) 3" strips, sewn together end to end and cut into (2) 3" x 46" borders and (1) 2-1/4" x 16" strip
Cut (2) 2-1/4" strips, sewn together end to end with the (1) 2-1/4" x 16" strip and cut into (2) 2-1/4" x 48" borders

2. Piecing Order:

1. Refer to Quilt Layout (Page 2) for arrangement and placement of panel, strips, and borders.

2. Stitch **Fabric E** 2-1/4" x 48" strips to sides of the **Fabric A** panel. Trim strip ends even. Add 3" x 46" **Fabric E** strips to top and bottom of panel. *Trim bordered panel to 44-1/2" x 51-1/2" (unfinished).*

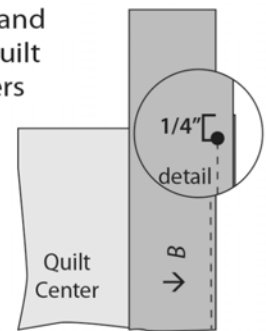
3. Sew **Fabric D** 2-1/2" x 51-1/2" borders to right and left sides of quilt center. Add **Fabric D** 3-1/2" x 48-1/2" borders to top and bottom of quilt center.

4. Fold and press **Fabric C** 1-1/2" x 57-1/2" and 1-1/2" x 48-1/2" strips in half lengthwise, right side out, forming 3/4" wide flat piping strips.

5. Baste 3/4" x 57-1/2" **Fabric C** flat piping strips on top of sides of quilt, with raw edges even with raw edges of **Fabric D** border. Baste 3/4" x 48-1/2" **Fabric C** flat piping on top of top and bottom of quilt, with raw edges even with raw edges of **Fabric D** border.

6. Center **Fabric B** 8-3/4" x 79" borders on right and left sides of quilt center and **Fabric B** 8-3/4" x 71" borders on top and bottom of quilt center with the cat stripe next to quilt center.

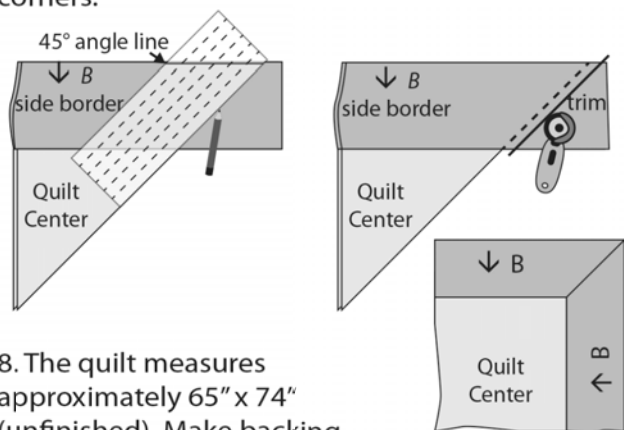
Stitch borders to sides starting and stopping 1/4" from corners of quilt center. Do not trim. Press borders out so **Fabric C** flat piping lays flat on **Fabric D** border.



Letters in italics indicate wrong side of fabric.

Arrows indicate orientation of directional prints.

7. Working with 1 corner at a time, fold the quilt right sides together so the outside edges of the borders line up. Using a 45-degree ruler, mark from the end of border seams to outer edges of borders. Stitch along marked line. Trim seam allowance to 1/4". Press corner seam open. Repeat on remaining corners.



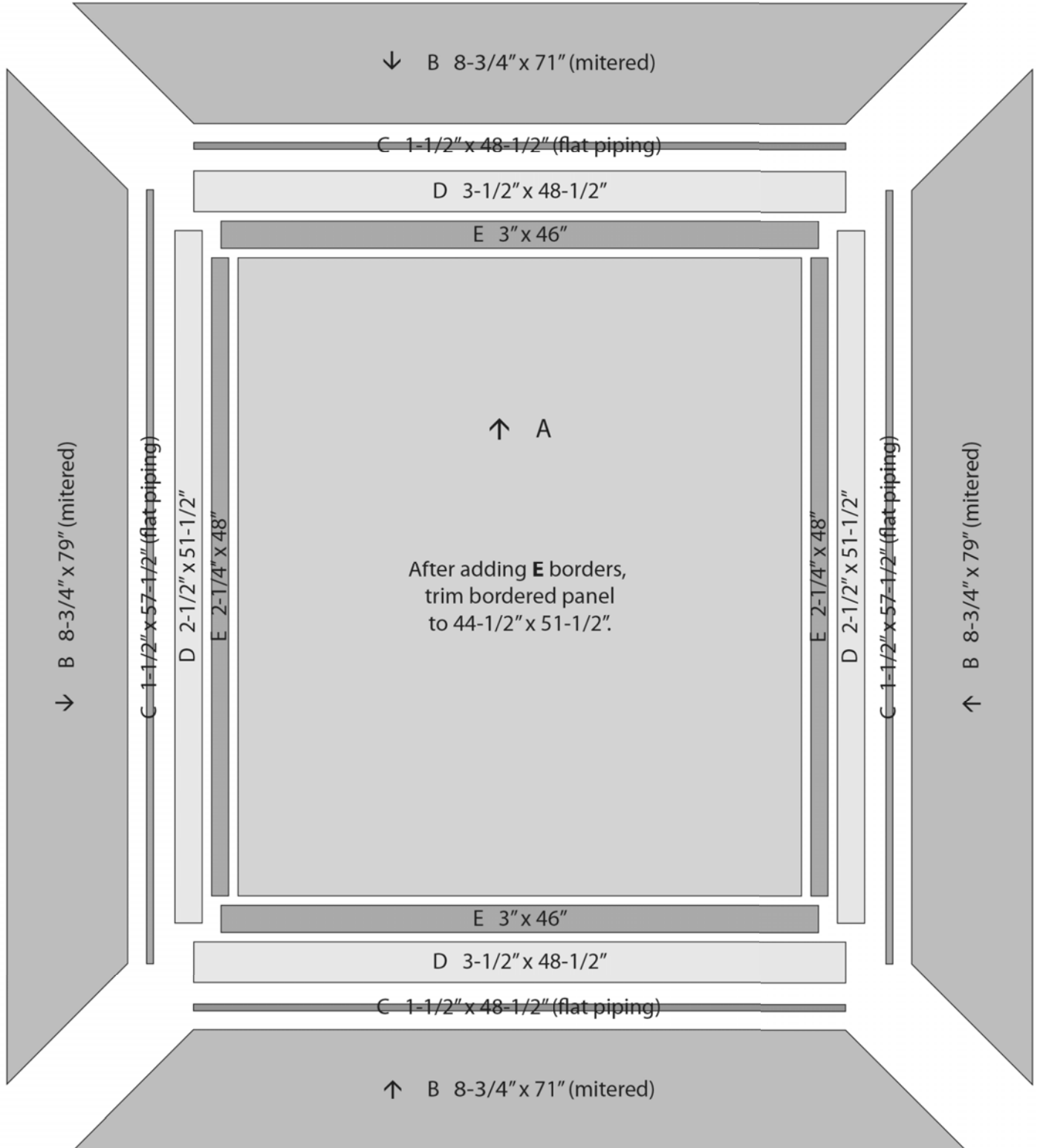
8. The quilt measures approximately 65" x 74" (unfinished). Make backing (**Fabric F**) approximately 8" larger than the top.

9. Layer and baste top, batting, and backing together. Quilt as desired. Attach binding (**Fabric C**) and enjoy!!

Buzzin' with my Gnome-iezz

QUILT LAYOUT

Border measurements are the cut size.
Arrows indicate orientation of directional prints.



3023

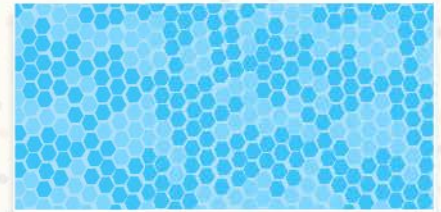
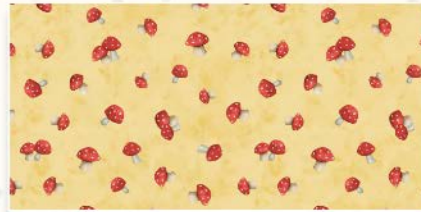
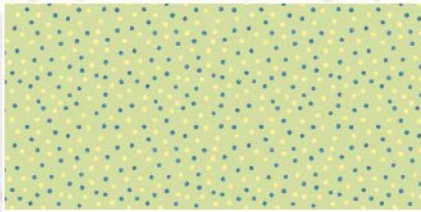
Buzzin' with my Gnome-iezz

By Susan Winget



Fabric A
3023-39834-745
1-1/3 yards (2 panels)

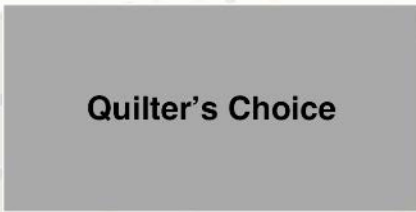
Fabric B
3023-39835-743
2-1/2 yards



Fabric C
3023-39841-754
1-1/8 yards (Including Binding)

Fabric D
3023-39839-531
5/8 yard

Fabric E
3023-39840-444
1/2 yard



Quilter's Choice

Fabric F
44/45" - 4-1/4 yards
108" - 2-1/4 yards

