

NON-SLIP 6" Log Cabin Trim Tool



Create perfect 6" Log Cabin, Half Log Cabin, or Courthouse Step blocks. Each round is squared up before the next round is added.
Designed by Jean Ann Wright



#CGRJAWMN6
Made in USA



SEE A DEMO
SCAN WITH ANY
QR READER



Creative Grids is covered by U.S. Trademark Registration No. 2,796,615

www.creativegrids.com
Leicestershire, LE13 0RG England
Melton Mowbray
Leicester Road Industrial Estate
Unit 23A Pate Road
Creative Grids® UK, Ltd.

www.creativegridsUSA.com
Maumee, OH 43537
400 W. Dussel Dr. Ste B,
Creative Grids® USA, Inc.



NON-SLIP 6" Log Cabin Trim Tool

Cutting Instructions for Log Cabin, Courthouse Steps, and Half Log Cabin Blocks

Block Size: 6" finished

Center squares: Cut a precise 2" square

Strips: Cut the strips any width as long as they are at least 1-1/2" wide. All strips must have a straight rotary cut edge on one long side. The strip ends and the opposite long side of the strips do not need to be rotary cut, they can be ripped, wavy or angled as all of the strips will be trimmed after sewing using the Log Cabin Trim Tool. Cut all strips slightly longer than needed.

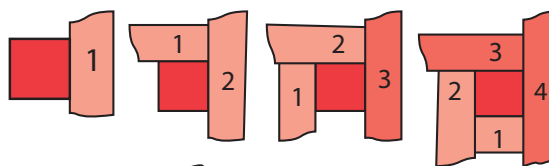
Sewing and Trimming Sequence for the Log Cabin block

Note: The blocks are constructed by adding each new strip in a clockwise direction. Sew all seams with a scant 1/4" seam allowance. As you add each strip, fold the new strip out with the seam allowance towards the outside edge. Press the seams as you sew.

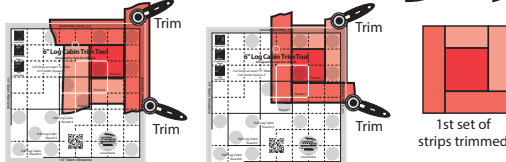
1st Set of Strips

1. With the right side of the 2" center square facing UP, place a strip that is slightly longer than 2" on top of the square with the right side of the strip facing DOWN. Stitch and press.
2. Turn the center square in a counter clockwise direction, adding strip #2 in a clockwise direction. Stitch and press.

3. Following the method in step 2, add strip #3 and strip #4. The first round of strips around the center square is ready to trim.



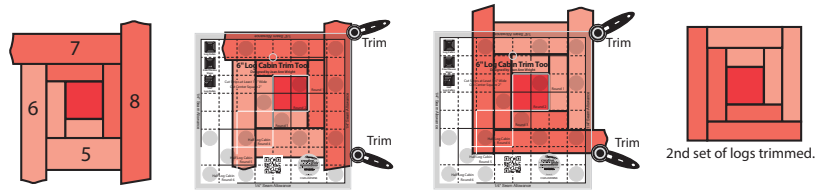
4. Position the Log Cabin Trim Tool with the outside square on the tool over the center square of the pieced unit. Trim up the right side and across the top. Turn the pieced unit a half turn with untrimmed sides positioned to trim up and across.



Sewing and Trimming Sequence for the Log Cabin block (cont.)

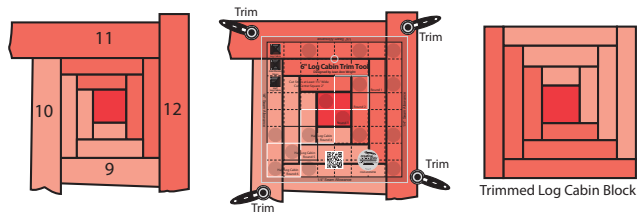
2nd Round of Log Cabin Strips

5. Repeat Steps 1 through 4 as you add the strips for the second round of strips (numbered 5 through 8) around the center square. Trim the block in the same manner as Step 4.



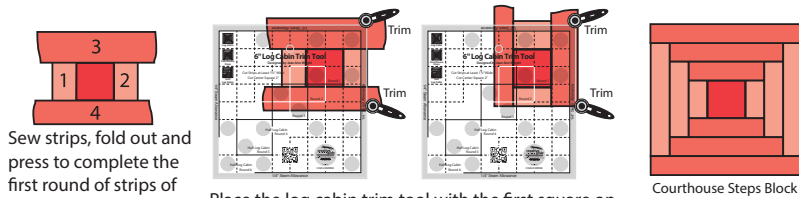
3rd Round of Log Cabin Strips

6. Repeat Steps 1 through 4 as you add the strips for the third round of strips (numbered 9 through 12) around the center square. Trim around the entire ruler for a perfect block.



Sewing and Trimming Sequence for the Courthouse Steps Block

The Courthouse Steps block is similar to the Log Cabin block with the strips added in sequence to opposite sides then to the top and bottom of the center square. As you add strips fold out and press. Trim each round of strips as they are added.

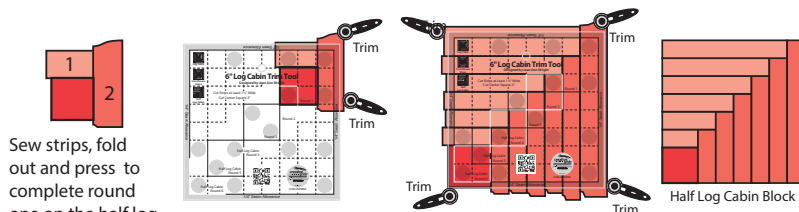


Sew strips, fold out and press to complete the first round of strips of the courthouse steps block.

Place the log cabin trim tool with the first square on the tool over the center square pieced unit and trim up the right side and across the top. Turn the block and trim the opposite side. Continue for each round.

Sewing and Trimming Sequence for the Half Log Cabin Block

To create a Half Log Cabin block add strips in sequence to two adjacent sides of a 2" corner square. Each round of strips is trimmed after sewing. As you add strips fold out and press. Continue to trim each round of strips as they are added.



Sew strips, fold out and press to complete round one on the half log cabin block.

Place the Log Cabin Trim Tool with the first marked log cabin square over the corner square of the block and trim. Continue to trim each round as added, trimming all four sides of the last round.



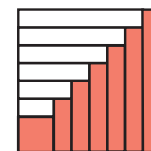
Sewing and Trimming Sequence

Half Log Cabin (6" Finished)

Cut a 2 1/4" corner square. (By increasing the size of the square for the Half Log Cabin, two sides of the pieced block will not be trimmed until the final round – adding an additional fudge factor to the block.)

Sew strips to two adjoining sides of the 2 1/4" square. Press toward the added strips.

In the example below, the "logs" were cut to size before sewing them to the block. You may sew them from strips if you prefer.



Half Log Cabin

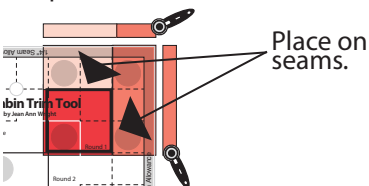
NOTE: One block can be cut from:

Light – 1 1/2" x 24 3/4"

Dark – 1 1/2" x 30 3/4"

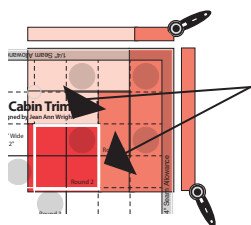
Round #1 **Light** 1 1/2" x 2 1/4"
 Dark 1 1/2" x 3 1/4"

Place the top and right side of the black Round #1 square on the two seamlines. Trim the right side and top. The other two sides of the pieced block will not be trimmed until the final trim.



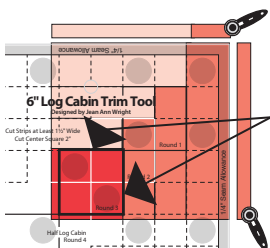
Round #2 **Light** 1 1/2" x 3"
 Dark 1 1/2" x 4"

Place the top and right side of the white Round #2 square on the two seamlines. Trim the right side and top.



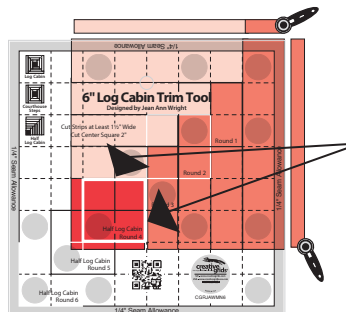
Round #3 **Light** 1 1/2" x 3 3/4"
 Dark 1 1/2" x 4 3/4"

Place the top and right side of the black Round #3 square on the two seamlines. Trim the right side and top.



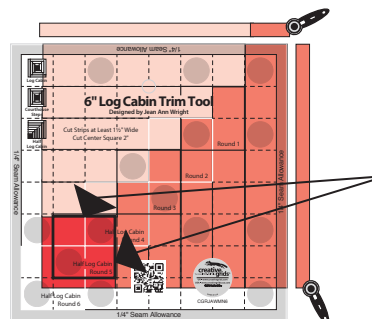
Round #4 **Light** 1 1/2" x 4 1/2"
 Dark 1 1/2" x 5 1/2"

Place the top and right side of the white Round #4 square on the two seam lines. Trim the right and top sides.



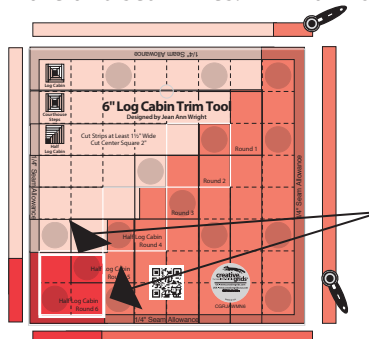
Round #5 **Light** 1 1/2" x 5 1/4"
 Dark 1 1/2" x 6 1/4"

Place the top and right side of the black Round #5 square on the two seam lines. Trim the right and top sides.



Round #6 **Light** 1 1/2" x 6"
 Dark 1 1/2" x 7"

Place the top and right side of the white Round #6 square on the two seamlines. **Trim all four sides.**



Sewing and Trimming Sequence

Traditional Log Cabin (6" Finished)

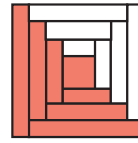
Center Square – 2"

Round #1	First Light	1 ½" x 2"
	Second Light	1 ½" x 3"
	First Dark	1 ½" x 3"
	Second Dark	1 ½" x 4"

Place the Round #1 Square on the seam lines. Trim two sides.
Rotate the tool and trim the other two sides.

Round #2	First Light	1 ½" x 3 ½"
	Second Light	1 ½" x 4 ½"
	First Dark	1 ½" x 4 ½"
	Second Dark	1 ½" x 5 ½"

Place the Round #2 Square on the seam lines. Trim two sides.
Rotate the tool and trim the other two sides.



Log Cabin

Round #3	First Light	1 ½" x 5"
	Second Light	1 ½" x 6"
	First Dark	1 ½" x 6"
	Second Dark	1 ½" x 7"

Place the Round #3 Square on the seam lines. Trim all four sides.

NOTE: One block can be cut from:
Light – 1 ½" x 24"
Dark – 1 ½" x 30"

Courthouse Steps (6" Finished)

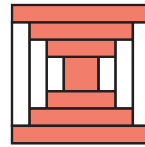
Center Square – 2"

Round #1	First & Second Light	1 ½" x 2"
	First & Second Dark	1 ½" x 4"

Place the Round #1 Square on the seam lines. Trim two sides.
Rotate the tool and trim the other two sides.

Round #2	First & Second Light	1 ½" x 3 ½"
	First & Second Dark	1 ½" x 5 ½"

Trim by placing the Round #2 Square on the seam lines.
Trim two sides. Rotate the tool and trim the other two sides.



Courthouse Steps

Round #3	First & Second Light	1 ½" x 5"
	First & Second Dark	1 ½" x 7"

Trim by placing the Round #3 Square on the seam lines.
Trim all four sides.

NOTE: One block can be cut from:
Light – 1 ½" x 21"
Dark – 1 ½" x 33"

Square in a Square (6" Finished)

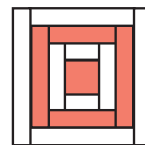
Center Square – 2"

Round #1	First & Second Light	1 ½" x 2"
	Third & Fourth Light	1 ½" x 4"

Place the Round #1 Square on the seam lines. Trim two sides.
Rotate the tool and trim the other two sides.

Round #2	First & Second Dark	1 ½" x 3 ½"
	Third & Fourth Dark	1 ½" x 5 ½"

Place the Round #2 Square on the seam lines.
Rotate the tool and trim the other two sides.



Square In A Square

Round #3	First & Second Light	1 ½" x 5"
	Third & Fourth Light	1 ½" x 7"

Place the Round #3 Square on the seam lines.

Trim all four sides.

NOTE: One block can be cut from –
Light – 1 ½" x 36"
Dark – 1 ½" x 18"