



Sail Away Quilt

61" x 86.5"

by Andi Metz

A Background for fish & Oar stripe



14444 Gone Fishing-Light Blue..... 1 yard

B Oars & Fish



14442 Anchors Away Ecrú 1 1/4 yards

C Background for Oars



14446 Lake Life-Navy..... 2 1/3 yards

D Stripe



14439 Sail Away Stripe-Multi..... 2/3 yard

E Border 1



14440 Lighthouses & Sailboats-Ecrú..... 7/8 yard

F Border 2



14437 Lake House Signs-Navy..... 1 1/4 yards

For the intermediate to advanced sewer

Your download or purchase of the pattern allows you to use it for personal, non-commercial purposes. Please do not duplicate this pattern in any way. Do not change any part of this pattern and republish it. This pattern is subject to copyright. Thank you.
©2023 Andi Metz for Simple Stitching

Sew using a 1/4" seam allowance. Always sew pieces right sides together (RST). Some illustrations show right sides together to show which way to align pieces, but it would be illustrated RST when sewing blocks together.

Cutting Instructions: This list below is here for you to pre-cut before you start sewing. They correspond to the steps in the instructions.

Fish

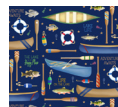
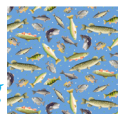
Fabrics *A-Gone Fishing* & *B-Anchors Away*



- 1a. Cut (2) 7" strips of *A-Gone Fishing* & (2) 7" strips *B-Anchors Away*. Cut fabrics into (6) 7x 7" Squares of each color.
*SAVE the excess fabric from B for step 1b.
- 1b. Cut (4) 1 1/2" strips of *B-Anchors Away* from excess from step 1a *You will use (2) for step 1b and (2) for step 2C.
- 1c. Cut (2) 2 1/2" strips of *A-Gone Fishing*. From that cut into (14) 2 1/2"x 5 1/2" pieces - (8) for step 1c, (2) for step 1d & (4) for step 2d
Cut (2) 2 1/2" strips of *B-Anchors Away*. From that cut into (12) 2 1/2"x 5 1/2" pieces - (8) for step 1c and (4) for step 1e.
- 1d. Use (2) 2 1/2" x 5 1/2" *A-Gone Fishing* pieces from 1c.
- 1e. Use (4) 2 1/2" x 5" *B-Anchors Away* pieces from 1c
- 1f. Cut (8) 1 1/2" strips of *A-Gone Fishing*

Oars

Fabrics: *A-Gone Fishing*, *B-Anchors Away*, *C-Lake Life*



- 2a. Cut (1) 7" strip of *B-Anchors Away* & (1) *C-Lake Life*, then cut each into (4) 7" Squares.
- 2b. Cut (10) 2 1/2" strips *C-Lake Life*. From that, cut each strip into a 2 1/2"x 27 1/2" piece, *SAVE excess fabric and cut (2) 2 1/2" x 5 1/2" pieces for step 2d.
Cut (5) 1 1/2" strips of *B-Anchors away*. From that cut each strip into a 1 1/2" x 27 1/2" piece.
- 2c. Use (2) 1 1/2" strips of *B-Anchors away* that was cut in 1b.
- 2d. Use (2) 2 1/2" x 5 1/2" pieces of *C-Lake Life* from 2b.
Cut (1) 2 1/2" strip of *A-Gone Fishing*, cut into (6) 5 1/2" pieces. In addition, you have (4) pieces from 1c, for total of (10) pieces.
- 2e. Cut (4) 2 1/2" strips of *B-Anchors Away*, then cut those strips into (25) 2 1/2" x 5 1/2" pieces.
- 2f. Cut (12) 4" strips of *C-Lake Life*.

Stripe

Fabric: *D-Stripe*



- 3a. Fussy Cut the boat strip from panel. It should measure 4 1/4" tall. You will need (4) strips.

Borders

Fabrics: *E-Lighthouses & Sailboats*, *F-Lake House Signs*



- 1st Border E-Lighthouses & Sailboats Cut (8) 3 1/2" strips.
- 2nd border *F-Lake House Signs* Cut (8) 5" strips.

Fish

Fabrics A-Gone Fishing & B-Anchors Away

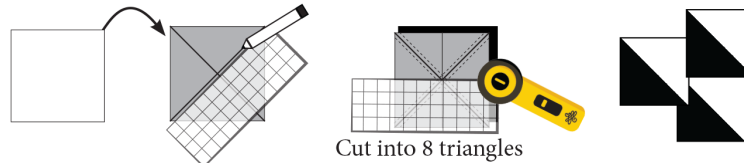
1a. Using (6) 7" Squares of Fabric A-Gone Fishing & B-Anchors Away make your half square triangles.

Half Square Triangles - 8 at a time

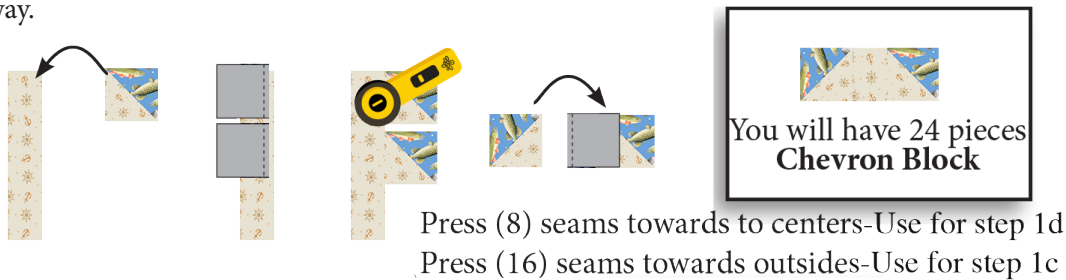
Using a ruler, draw 2 diagonal lines on the wrong side of lighter fabric.

Pin A square and B square right sides together. Using the diagonal lines as guides, sew squares together by sewing 1/4" seam on **BOTH SIDES of diagonal lines (DON'T SEW ON THE LINE)**.

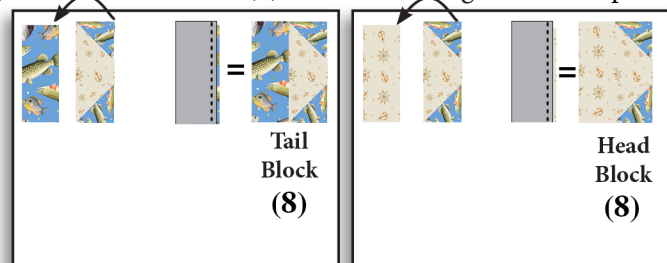
Cut the squares by cutting in half and in half again so you have four 3 1/2" squares. Cut the diagonal lines of those pieces to make 8 triangles. Gently press open; you do not want to stretch your square. Square to 2.5". Repeat for all pairs of squares. You will have 48 half square triangles.



1b. Strip sew 24 half square triangles to B-Anchors away pieces as shown. Trim to 2 1/2". Sew half triangle on other side of B Anchors Away.



1c. Using the (16) Chevron Blocks pressed towards outside, with RST sew (8) **Chevron Blocks** to (8) B-Anchors Away 2 1/2"x 5 1/2" pieces. RST, sew (8) **Chevron Blocks** to (8) A-Gone Fishing 2 1/2"x 5 1/2" pieces. Press.



1d. Using the remaining Chevron Blocks from 1b, RST, Sew 8 **Chevron Blocks** to 8 **Tail Blocks**, Press. RST, Sew 6 **Head Block** to the (6) of the Chevron/Tail blocks to complete the fish. Press. This makes (6) small fish. There will be (2) left-over to make the large fish.



Sew (2) **Head blocks** to (2) B-Gone Fishing 2 1/2"x 5 1/2" pieces. Press.



1e. Using (2) 2 1/2"x5 1/2" pieces and sew (2) strips together lengthwise, press. Repeat for the remaining (2) strips. Sew to this piece to **Head Block**. Sew **Tail Block** to new **Head Block** to make large fish. Repeat.



Sew new strip block to Head Block. Then sew it to tail block to complete large fish.

1f. Arrange Fish and sew blocks together. Using the (8) 1 1/2" strips of A-Gone Fishing and sew strips in sets of 2 together on short end. Sew a strip set to both top and bottom of fish block set as shown; Press and Trim, it should measure 46.5"



Oars

Fabrics: A-Gone Fishing, B-Anchors Away, C-Lake Life

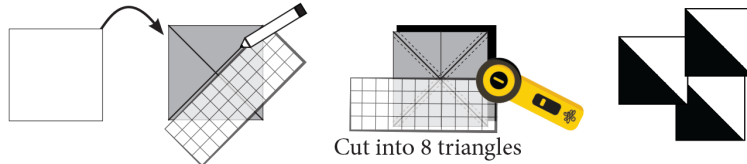
2a. Using (4) 7" squares of both fabrics B-Anchors Away & C-Lake Life make your half square triangles.

Half Square Triangles - 8 at a time

Using a ruler, draw 2 diagonal lines on the wrong side of lighter fabric.

Pin A square and B square right sides together. Using the diagonal lines as guides, sew squares together by sewing 1/4" seam on **BOTH SIDES of diagonal lines (DON'T SEW ON THE LINE)**.

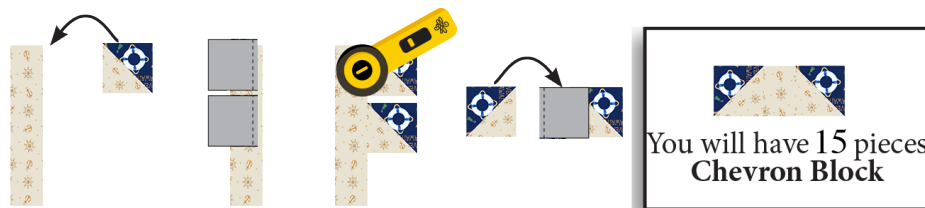
Cut the squares by cutting in half and in half again so you have four 3 1/2" squares. Cut the diagonal lines of those pieces to make 8 triangles. Gently press open; you do not want to stretch your square. Square to 2.5". Repeat for all pairs of squares. You will have 32 half square triangles but you will only use 30.



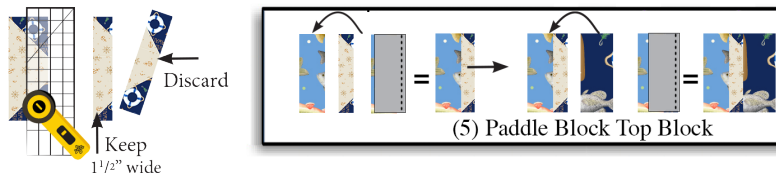
2b. Sew a C-Lake Life 2 1/2" x 27 1/2" piece on both sides of a B-Anchors Away 1 1/2" x 27 1/2" piece to create **Handle Arm Block**. You will make 5.



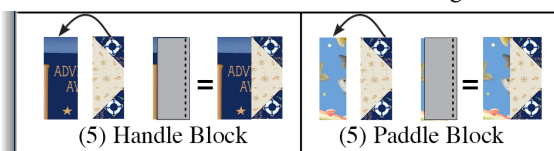
2c. Strip sew (15) half square triangles to Anchor's Away strip as shown. Trim to 2 1/2". Sew (15) half triangles on other side.



2d. Cut (5) **Chevron Blocks** to 1 1/2" wide for the oar top, discarding the excess piece with the point. See illustration below. Use (5) 2 1/2" x 5 1/2" pieces of each A-Gone Fishing, (5) cut **Chevron Blocks** and (5) C-Lake Life pieces to create **Paddle Top Block**.



Use (5) 2 1/2" x 5 1/2" A-Gone Fishing pieces and (5) **Chevron Blocks** (uncut) and sew together to make **Paddle Block**. Use (5) 2 1/2" x 5 1/2" C-Lake Life pieces and (5) **Chevron Blocks** (uncut) and sew together to create **Handle Block**.



2e. Sew (5) together length wise to create body. Repeat. You will create (5) total strips sets of fish body. Sew **Paddle Block top** to strip set body, trim & press. Sew **Paddle Block top to Paddle Block** as shown. Repeat to make (4) more paddle tops.

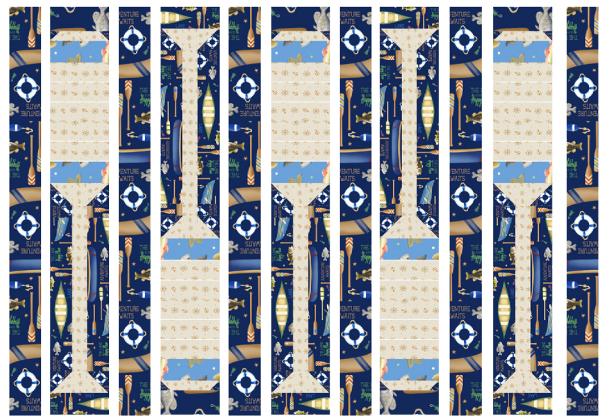


2f. Sew to finish Oars by sewing **Handle Block**, **Handle Arm Block** and **Paddle Block**. Repeat to make (4) more oars.



2f. *In sets of (2)*, Sew the 4" strips of *C-Lake Life* together on the short ends to create 6 long strips.

2h. Center and sew strips from step 2f as shown to create center section of quilt. Press after sewing each strip. Trim excess fabric so you block measures 50¹/₂".



Fussy Cut Boats

Fabric: D-Stripe

3a. Sew (2) fussy cut strips together on short ends to make one long strip. Repeat for the other (2) strips. Press seam.

Borders

Sew (2) E-Lighthouses & Sailboats border strips together on the short end to make one long border. Repeat for other 1st border strips. You will have 4 total.

Sew (2) F Lake House Signs border strips together on the short end to make one long border. Repeat for other 2nd border strips. You will have 4 total.

Assembling the Quilt

Assemble and sew the interior of the quilt together as shown in Step 1 below.

*Make sure your Oars are vertical.

*When sewing your sailboat stripes to the Oars panel, center stripe and trim off excess after sewing.

*Also note, the fish set at the bottom of quilt is rotated so the big fish is on the left.

Sew borders as shown in the numbered steps 2-4 on the image.

Add batting and backing and finish as desired.



Enjoy your a-*luring* quilt.

Andi

