

MAYWOOD  STUDIO

Petals on Point



Petals on Point by Kimberbell®

Featuring the Vintage Flora collection by Kimberbell® from Maywood Studio.

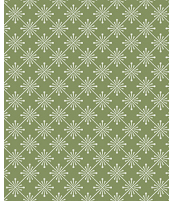
55-1/2" x 55-1/2"

maywoodstudio.com

KIMBERBELL®
Vintage
Flora



Fabric 1
8210-WPZ



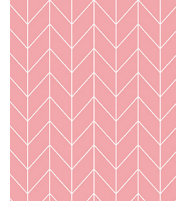
Fabric 2
10339-G



Fabric 3
10330-W



Fabric 4
10332-S



Fabric 5
10337-P



Fabric 6
10337-Q



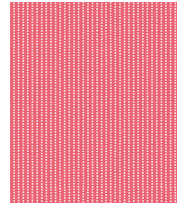
Fabric 7
10331-K



Fabric 8
10334-Q



Fabric 9
10333-K



Fabric 10
10336-P



Fabric 11
10331-P



Fabric 12
10338-S



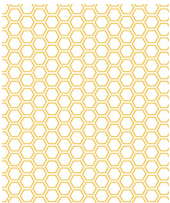
Fabric 13
10334-P



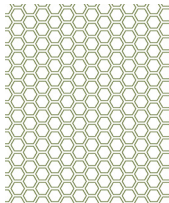
Fabric 14
10332-K



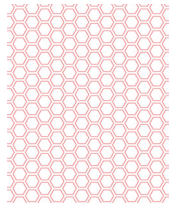
Fabric 15
10334-S



Fabric 16
10335-S



Fabric 17
10335-G



Fabric 18
10335-P

WOF - Width of Fabric
LOF - Length of Fabric
RST - Right Sides Together
HST - Half Square Triangle

MAYWOOD  STUDIO

Maywood Studio makes every effort to make sure our patterns are accurate.
Check for updates at maywoodstudio.com/projects

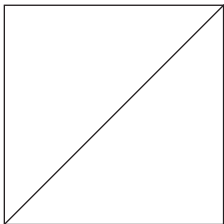
Fabric Requirements

Fabric 1	8210-WPZ	2 yards
Fabric 2	10339-G includes binding	5/8
Fabric 3	10330-W	Fat Eighth
Fabric 4	10332-S	Fat Eighth
Fabric 5	10337-P	1/4 yard
Fabric 6	10337-Q	3/8 yard
Fabric 7	10331-K	Fat Eighth
Fabric 8	10334-Q	1/4 yard
Fabric 9	10333-K	Fat Eighth
Fabric 10	10336-P	Fat Eighth
Fabric 11	10331-P	Fat Eighth
Fabric 12	10338-S	Fat Eighth
Fabric 13	10334-P	1/4 yard
Fabric 14	10332-K	Fat Eighth
Fabric 15	10334-S	Fat Eighth
Fabric 16	10335-S	Fat Sixteenth
Fabric 17	10335-G	Fat Sixteenth
Fabric 18	10335-P	Fat Sixteenth
Backing	108" wide	1-3/4 yards
	44/45" wide	3-1/2 yards

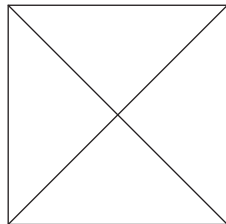
Fat Sixteenth 9" x 11"

Fat Eighth 11" x 18"

Fat Quarter 18" x 22"



Corner Triangles
Cut once
on the diagonal.



Setting Triangles
Cut twice
on the diagonal.

Cutting

Fabric 1 - White with pin dots

Cut (7) 2-1/2" x WOF strips into (104) 2-1/2" squares

Cut (6) 4-1/2" x WOF strips into (52) 4-1/2" squares

Cut (1) 13" square twice on the diagonal for 4 corner triangles

Cut (4) 12-3/4" squares once on the diagonal for 8 setting triangles

Fabric 2 - green geo

Cut (3) 2" x WOF strips into (48) 2" squares

Binding
(6) 2-1/4" x WOF strips

Fabrics 4, 7, 9, 10, 11, 12, 14

(5) 4-1/2" squares

Fabric 3

(4) 4-1/2" squares

Fabric 5

(5) 4-1/2" squares

(1) 2-1/2" x 9" rectangles

(2) 2-1/2" x 9-1/2" rectangles

Fabric 6

(10) 4-1/2" squares

(2) 2-1/2" x 9" rectangles

(2) 2-1/2" x 9-1/2" rectangles

Fabric 8

(5) 4-1/2" squares

(1) 2-1/2" x 9-1/2" rectangles

(1) 2-1/2" x 10" rectangles

Fabric 13

(5) 4-1/2" squares

(4) 2-1/2" x 9" rectangles

(1) 2-1/2" x 9-1/2" rectangles

Fabric 15

(1) 4-1/2" square

(3) 2-1/2" x 9" rectangles

Fabric 16

(2) 2-1/2" x 9-1/2" rectangles

Fabric 17

(3) 2-1/2" x 10" rectangles

Fabric 18

(2) 2-1/2" x 9" rectangles

Petals on Point Quilt Instructions

Please read all instructions before you begin. Seam allowance is 1/4. Fabric is abbreviated as 'F' - for example, F1 refers to Fabric 1. Press in the direction of arrows.

Petal Units

Gather (104) F1 2-1/2" squares, (4) 4-1/2" squares of F3-F5, F7-F14, and (8) F6 4-1/2" squares.

1. Draw a diagonal line from corner to corner on the wrong side of all F1 squares.

2. Place a F1 square, RST, on the left top corner of a 4-1/2" F3 square. Sew on the marked line as illustrated to the right. Trim 1/4" away from the stitched line. Press towards F1.

3. Place another F1 square, RST, on the right top corner of the F3 square. Sew on the marked line. Trim 1/4" away from the stitched line. Press towards F1. Make a total of 4 petal units.

4. Repeat Steps 2-3 to make 4 petal units of F4, F5, F7-F14.

5. Repeat Steps 2-3 to make 8 petal units of F6.



Make 4 of each except
Make 8 of F6

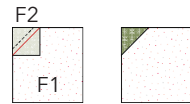
Cut-away corners

Gather (8) F1 setting triangles, (40) F1 4-1/2" squares, and (48) F2 2" squares.

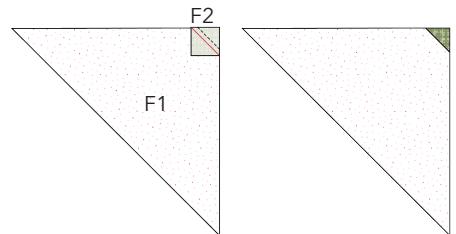
1. Draw a diagonal line from corner to corner on the wrong side of all F2 squares.

2. Place a F2 square, RST, on one corner of a F1 4-1/2" square. Sew on the marked line as illustrated to the right. Trim 1/4" away from the stitched line. Press open. Make 40 cut-away corners.

3. Place a F2 square, RST, on the corner of a F1 setting triangle, as illustrated to the right. Sew on the marked line. Trim 1/4" away from the stitched line. Press open. Make 8 cut-away corners.



Make 40



Make 8

Flower Blocks

Gather all petal units, (40) F1 cut-away corner square units, (12) F1 4-½" squares, (1) 4-½" square: F4, F5, F7-F15, (2) F6 4-½" squares.

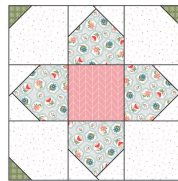
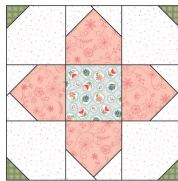
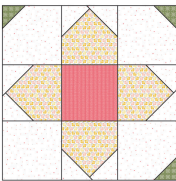
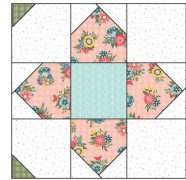
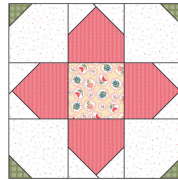
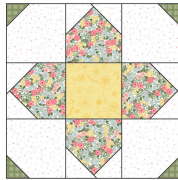
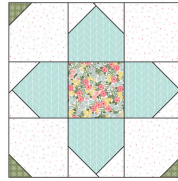
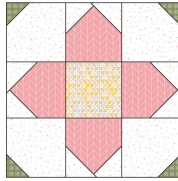
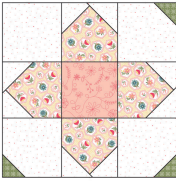
1. Sew a F1 square to either side of a F3 petal unit. Refer to the right for orientation. Press toward the F1 squares.
2. Sew a F3 petal unit to either side of a F8 square. Press toward the center.
3. Sew a F1 cut-away corner square to either side of a F3 petal unit.
4. Sew each row together, pressing rows open.
5. Repeat Steps 1-4 with the fabric combinations as illustrated below. Pay close attention to the placement and quantity of F1 cut-away corner squares. Make one of each.



Center F8
Petals F3



12-1/2" x 12-1/2"
Make 1



Center F10
Petals F12

Center F14
Petals F13

Center F5
Petals F14

Center F7
Petals F6

Top/Bottom Borders

Gather (3) F17 2- $\frac{1}{2}$ "x10" rectangles, (1) F8 2- $\frac{1}{2}$ "x10" rectangle, (2) F6 2- $\frac{1}{2}$ "x9- $\frac{1}{2}$ " rectangles, (2) F5 2- $\frac{1}{2}$ "x9- $\frac{1}{2}$ " rectangles, (2) F16 2- $\frac{1}{2}$ "x9- $\frac{1}{2}$ " rectangles, (1) F8 2- $\frac{1}{2}$ "x9- $\frac{1}{2}$ " rectangle, and (1) F13 2- $\frac{1}{2}$ "x 9- $\frac{1}{2}$ " rectangle.

1. Lay out the fabric rectangles as illustrated below. Making sure to place the 10" wide rectangles at the ends of the rows.
2. Sew the rectangles together into rows. Press. The Top/Bottom border should measure 2- $\frac{1}{2}$ "x55- $\frac{1}{2}$ ".

Side Borders

Gather (1) F5 2- $\frac{1}{2}$ "x9" rectangle, (2) F6 2- $\frac{1}{2}$ "x9" rectangles, (4) F13 2- $\frac{1}{2}$ "x9" rectangles, (3) F15 2- $\frac{1}{2}$ "x9" rectangles, (2) F18 2- $\frac{1}{2}$ "x9" rectangles.

1. Lay out the fabric rectangles as illustrated below.
2. Sew the rectangles together into rows. Press. Each side border should measure 2- $\frac{1}{2}$ "x51- $\frac{1}{2}$ ".

Left Side Border



Ride Side Border



Top Border



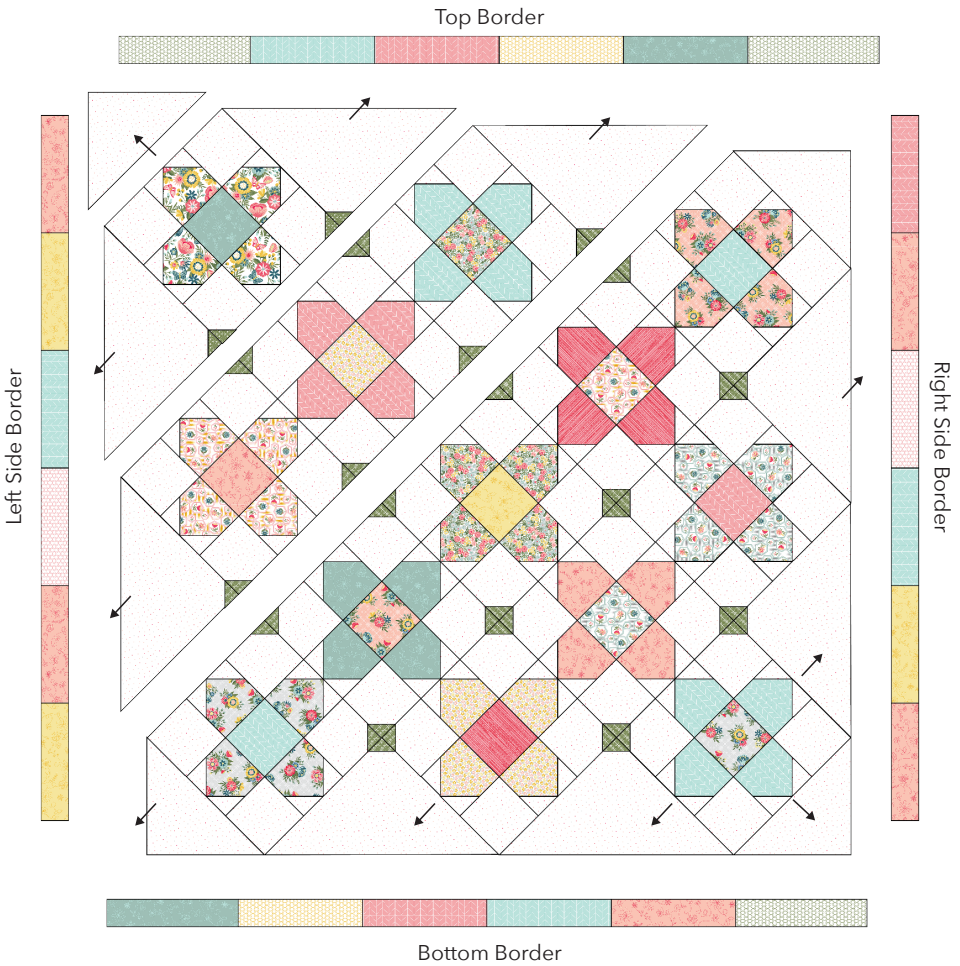
Bottom Border



Quilt Top Rows

1. Lay out the flower blocks, setting triangles and corner triangles as illustrated on p. 7.
2. Sew blocks into rows, pressing as indicated by the arrows.
3. Sew the rows together. Press open. The quilt top should measure 51- $\frac{1}{2}$ " square.
4. Sew the side borders to the sides of the quilt top. Press toward the border.
5. Sew the top and bottom borders to the top/bottom of the quilt top. Press toward the border.

Quilt Top Assembly Diagram



Tip: Pin the borders to the quilt top starting at the center and pinning out to the edge. This will help to make sure you don't stretch the borders as you sew.

Finishing

1. Layer the backing (wrong side up), batting and quilt top (right side up). Baste layers to secure. Quilt as desired. Trim the excess backing and batting.
2. Sew the binding strips together into one continuous strip. Press in half length-wise. Sew the binding to the quilt top with a $1/4$ " seam allowance. Turn the binding to the back side of the quilt and stitch down by hand with matching thread.

Quilt Planning Diagram

Use this diagram to plan your quilt top.

