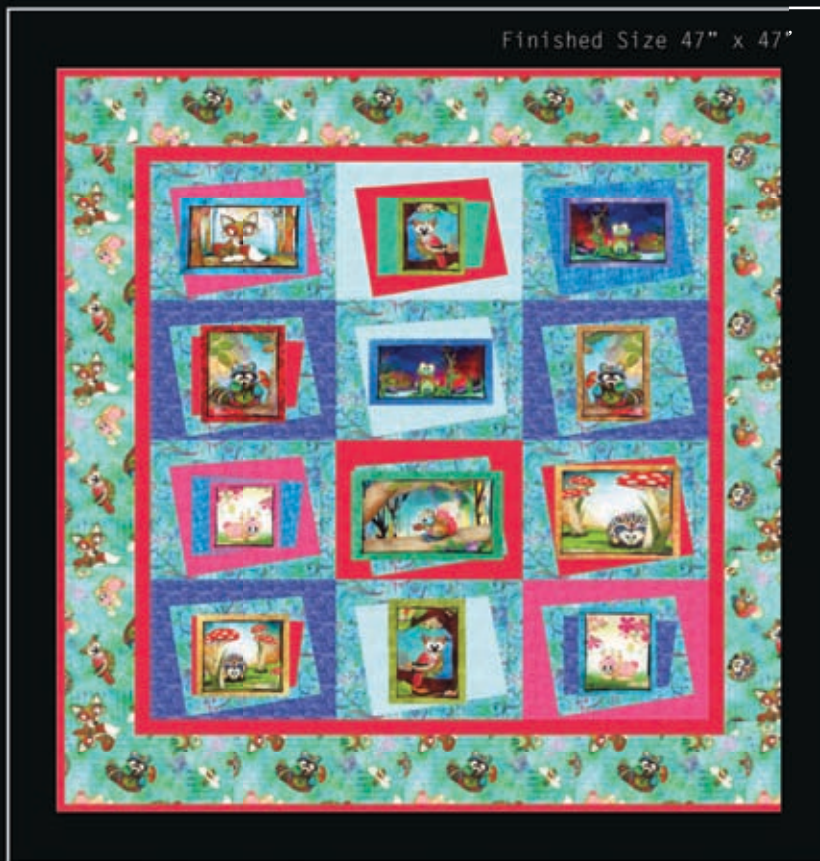


Quilt design by Diane Nagle featuring fabrics from the "Forest Friends" collection, a part of the HOFFMAN SPECTRUM digital-print division



Free pattern available from HoffmanFabrics.com



N4231-41-Aqua



N4232-41-Aqua



N4233-41-Aqua



1895
434-Radish



1895
490-Cabana



1895
67-Flame



1895
29-Jade



1895
603-Election Day



1895
332-Julie

HOFFMAN SPECTRUM

"Forest Friends"

by Hoffman California Fabrics Quilt design

by Diane Nagle

Quilt Yardage Chart

Aqua Colorway	Cream Colorway	
A - N4233-41-Aqua	A - N4233-71-Lime	1 $\frac{3}{4}$ yards
B - 1895-434-Radish	B - 1895-434-Radish	$\frac{1}{2}$ yard
C - 1895-490-Cabana	C - 1895-490-Cabana	$\frac{1}{2}$ yard
D - 1895-67-Flame	D - 1895-67-Flame	1 yard
E - 1895-29-Jade	E - 1895-29-Jade	$\frac{3}{4}$ yard
F - 1895-603-Election Day	F - 1895-603-Election Day	$\frac{3}{4}$ yard
G - 1895-332-Julie	G - 1895-332-Julie	$\frac{3}{4}$ yard
H - N4232-41-Aqua	H - N4232-33-Cream	$\frac{3}{4}$ yard
I - N4231-41-Aqua	I - N4231-33-Cream	$\frac{3}{4}$ yard

Note: These are estimated yardages. Final yardages will be on pattern.

BACKING: "Forest Friends" coordinate of your choice. 3 $\frac{3}{4}$ yards



N4231
33-Cream



N4232
33-Cream



N4233
71-Lime



1895
434-Radish



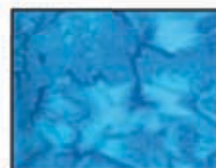
1895
490-Cabana



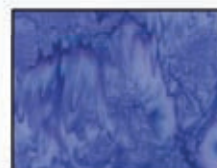
1895
67-Flame



1895
29-Jade



1895
603-Election Day



1895
332-Julie

Forest Friends

Fabric Collection by Hoffman Fabrics

Quilt design by Diane Nagle • Quilt size 47" x 47" • Block size: 12" x 9"

Yardage

	Style	Amount	Used for
--	-------	--------	----------

Fabric A	N4233 41-Aqua	N4233 71-Lime	1 3/8 yards	Blocks
Fabric B	1895 434-Radish	1895 434-Radish	1/2 yard	Blocks
Fabric C	1895 490-Cabana	1895 490-Cabana	1/2 yard	Blocks
Fabric D	1895 67-Flame	1895 67-Flame	1 yard	Blocks, borders, binding
Fabric E	1895 29 Jade	1895 29 Jade	3/8 yard	Blocks
Fabric F	1895 603-Election Day	1895 603-Election Day	3/8 yard	Blocks
Fabric G	1895 332-Julie	1895 332-Julie	5/8 yard	Blocks
Fabric H	N4232 41-Aqua	N4232 33-Cream	3/4 yard	Outer Border
Fabric I	N4231 41-Aqua	N4231 33-Cream	3/4 yard	Applied animals

Cutting *(It is advisable to mark your rectangles and squares for foundation piecing by the block # foundation # (eg. A3) and place them in separate baggies to avoid confusion during the paper piecing process).*

From Fabric A, cut:

For Block 1 only:

- (3) 3 1/2" x 42" strips; cut into (5) 3 1/2 x 10" rectangles for A5 on the foundation pattern, and (5) 3 1/2" x 9" rectangles for A1 on foundation pattern.
- (3) 3" x 42" strips; cut into (5) 3" x 11" rectangles for A3, and (5) 3" x 12 1/2" rectangles for A4.
- (1) 10" x 20" strip; cut into (2) 9" x 10" rectangles for A2 (block center).

For Block 2 only:

- (1) 4" x 42" strip; cut into (1) 4" x 10" rectangle for A9, and (1) 3 1/2" x 9" rectangle for A6.
- (1) 3" x 42" strips; cut into (1) 3" x 11" rectangles for A7, and (1) 3" x 12" rectangles for A8.
- (3) 3" x 42" strips; cut into (3) 3" x 6" rectangles for A1, (3) 3" x 6 1/2" rectangles for A3, (3) 3" x 10" rectangles for A4, and (3) 3" x 10" rectangles for A5.

From Fabric B, cut:

For Block 1 only:

- (1) 10" x 42" strip; cut into (1) 9" x 10" rectangle for A2. Set aside remaining strip for Block 2.

For Block 2 only:

- (1) 4" x 42" strip; cut into (1) 4" x 10" rectangle for A9, (1) 3 1/2" x 9" rectangle for A6, (1) 3" x 11" rectangle for A7 and (1) 3" x 12" rectangle for A8.
- Using remaining 10" strip; cut into (1) 3" x 6" rectangle for A1, (1) 3" x 6 1/2" rectangle for A3, (1) 3" x 10" rectangle for A4, and (1) 3" x 10" rectangle for A5.

From Fabric C, cut:

For Block 1 only:

- (1) 10" x 42" strip; cut into (2) 9" x 10" rectangles for A2.

For Block 2 only:

- (1) 4" x 42" strip; cut into (1) 4" x 10" rectangle for A9, (1) 3 ½" x 9" rectangle for A6, (1) 3" x 11" rectangle for A7 and (1) 3" x 12" rectangle for A8.

From Fabric D, cut:

For Block 1 only:

- (1) 3 ½" x 42" strip; cut into (1) 3 ½" x 10" rectangle for A5, and (1) 3 ½" x 9" rectangle for A1.
- (1) 3" x 42" strip; cut into (1) 3" x 11" rectangle for A3, and (1) 3" x 12 ½" rectangle for A4.
- (1) 10" x 42" strip; cut into (1) 9" x 10" center A2. Use remaining strip for block 2.

For Block 2 only:

- Using remaining 10" strip; cut into (2) 10" squares for A2, (1) 3" x 10" rectangles for A5, (1) 3" x 10" rectangles for A4, (1) 3" x 6" rectangles for A1 and (1) 3" x 6 ½" rectangles for A3.

Inner border:

- (4) 1 ½" x 42" strips. Piece the strips and cut (2) 1 ½" x 36 ½" strips and (2) 1 ½" x 38 ½" strips.

Binding:

- (5) 2 ¼" x 42" binding strips

From Fabric E, cut:

For Block 2 only:

- (1) 10" x 42" strip; cut into (1) 10" square for A2.

From Fabric F, cut:

For Block 1 only:

- (1) 10" x 42" strip; cut into (1) 9" x 10" rectangle for A2. Use remaining strip for Block 2

For Block 2 only:

- Using remaining 10" strip cut into (1) 10" square for A2.

From Fabric G, cut:

For Block 1 only:

- (1) 3 ½" x 42" strip; cut into (1) 3 ½" x 10" rectangle for A5, and (1) 3 ½" x 9" rectangle for A1
- (1) 3" x 42" strip; cut into (1) 3" x 11" rectangle for A3, and (1) 3" x 12 ½" rectangle for A4

For Block 2 only:

- (1) 12" x 42" strip; cut into (2) 3" x 12" rectangles for A8, (2) 3 ½" x 9" rectangles for A6, (2) 3" x 11" rectangles for A7, (2) 4" x 10" rectangles for A9 and (1) 10" square for A2.

From Fabric H, cut:

- (5) 5" x 42" outer border strips. Piece the strips and cut (2) 5" x 38 ½" strips and (2) 5" x 47 ½" strips.

From Fabric I, cut:

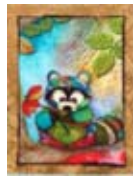
- Trim around each animal panel used, see quilt photo, ¼" from edge of panel frame.

Block 1 Assembly

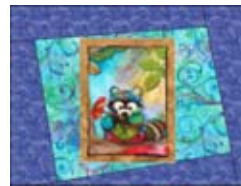
1. Use the foundation pattern for Block 1 to paper piece the block together. Print out (5) patterns and tape together along the dotted line. Each block will have different fabrics in the center and the outer block border.
2. Start with the first block; paper piece Fabric G foundation strips A1, A3, A4 and A5 to the center foundation A2, which is Fabric A. See diagram 1.



←Diagram 1.
←Borders are
Fabric G



←Diagram 2.



←Diagram 3.
Completed Raccoon block

3. Turn under the $\frac{1}{4}$ " seam allowance on the tan framed raccoon. Use your favorite method of applique to stitch in place over the center of the block. See Diagrams 2 and 3. The block measures $12\frac{1}{2}$ " x $9\frac{1}{2}$ " unfinished.
4. Repeat in the same manner using same foundation strips to complete the next four blocks in the fabrics listed:

- a. Fabric F center (A2), borders paper pieced in Fabric A for border of block. Applique the purple framed frog over the center. See Diagram 4.
- b. Fabric C center, Fabric A borders with blue framed frog applique. See Diagram 5.
- c. Fabric A center, Fabric D borders with squirrel applique. See Diagram 6.
- d. Fabric C center, Fabric A borders with green framed owl applique. See Diagram 7.



Diagram 4



Diagram 5



Diagram 6



Diagram 7

Block 2 Assembly

5. Use the foundation pattern for Block 2 to paper piece the block together. Print out (7) patterns and tape together along the dotted line. Each block will have different fabrics in the center, *inner block border* and the outer block border. The center will again be A2. The inner border strips will be A1, A3, A4, and A5. The outer border strips will be A6, A7, A8 and A9. Sew the inner border onto the center, and the outer border strips to the inner border sides. The animal panels will be applied to the block centers as before, sometimes covering the entire center piece A2. The blocks will measure $12\frac{1}{2}$ " x $9\frac{1}{2}$ " unfinished. Complete the next seven blocks as follows:

- a. Fabric C center, (will not show after applique is sewn on), Fabric B for inner border and Fabric A for outer border. The fox panel is applied to the center. See Diagram 8.
- b. Fabric E center, Fabric D inner border and Fabric C outer border with small owl applique. See Diagram 9.
- c. Fabric D center, Fabric A inner border and Fabric G outer border with red framed raccoon applique. See Diagram 10
- d. Fabric F center, Fabric B inner border and Fabric A outer border with pink framed bunny applique. See Diagram 11.
- e. Fabric C center (will not show after applique is sewn on), Fabric D inner border and Fabric A outer border with large hedgehog applique. See Diagram 12.
- f. Fabric D center, Fabric A inner border and Fabric G outer border with small hedgehog applique. See Diagram 13.
- g. Fabric G center, Fabric A inner border, and Fabric B outer border with blue framed bunny applique. See Diagram 14.



Diagram 8



Diagram 9

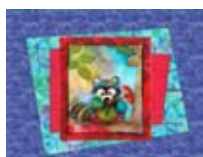


Diagram 10



Diagram 11



Diagram 12

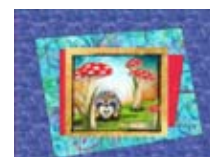


Diagram 13



Diagram 14

Assembling the Quilt

6. Lay out the blocks in 4 rows of 3 blocks each, arranging them in order from left to right as follows:

- a. Row 1: Fox Block 2, small owl Block 2, frog Block 1.
- b. Row 2: Raccoon Block 2, frog Block 1, raccoon Block 1.
- c. Row 3: pink bunny Block 2, squirrel Block 1, large hedgehog Block 2.
- d. Row 4: Small hedgehog Block 2, large owl Block 1, blue bunny Block 1.

7. Join the blocks into rows and then join the rows to complete the quilt top center. The center should measure 36" x 36".

8. Sew the Fabric D 1 1/2" x 36 1/2" strips to opposite sides of the quilt top. Sew the Fabric D 1 1/2" x 38 1/2" strips to the top and bottom of the quilt to complete the inner border.

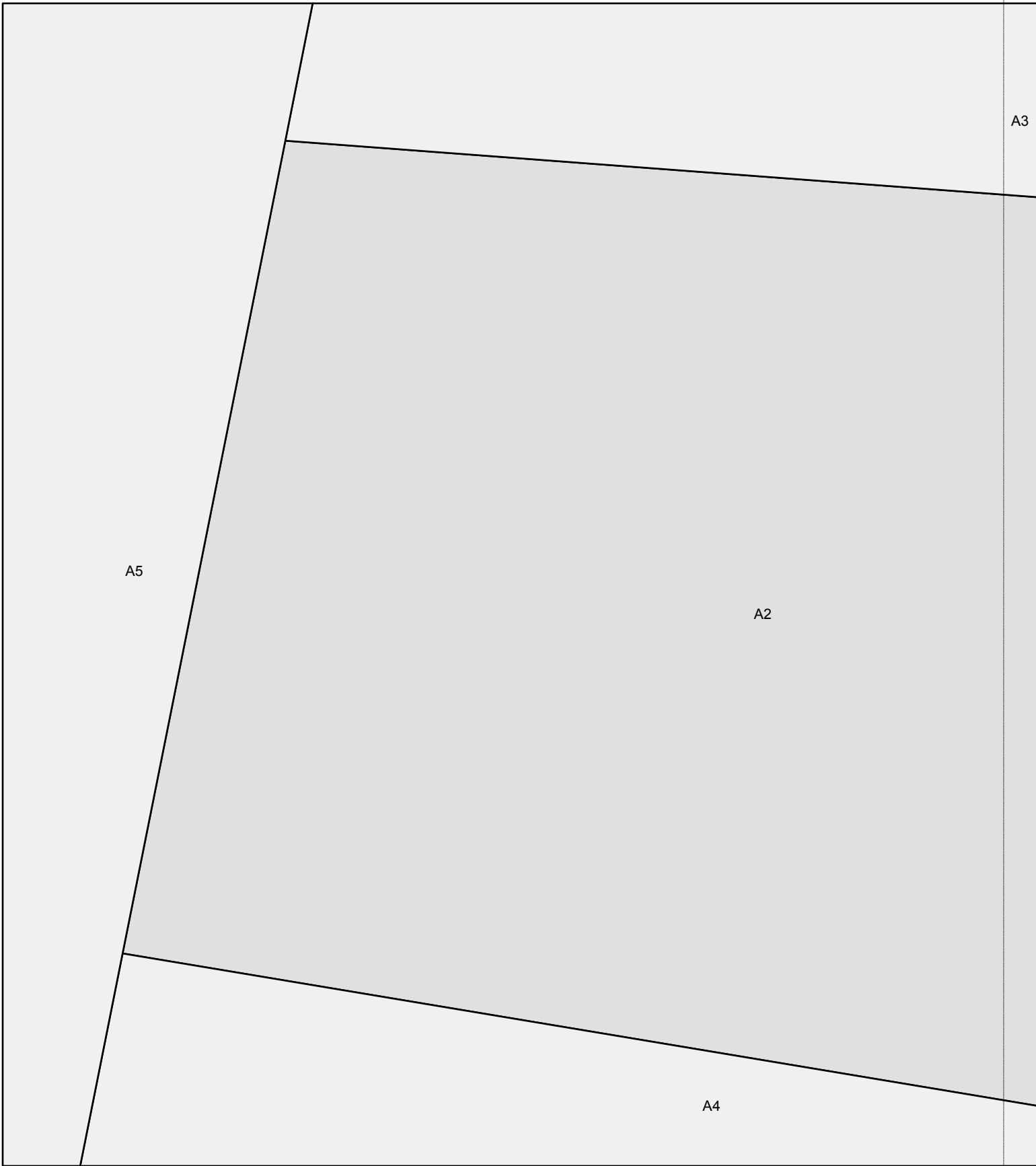
9. Sew the Fabric H 5" x 38 1/2" strips to opposite sides of the quilt top. Sew the Fabric H 5" x 47 1/2" strips to the top and bottom of the quilt to complete the outer border.

10. Layer the quilt top with batting and backing; quilt as desired. Using the Fabric D 2 1/4" strips, bind the edges to finish.



Quilt assembly diagram

Block 1



A3

A1

Block 2

