

# Devon Quilt



Approximate Quilt Size: 76" x 90½"

Design by Wendy Sheppard  
Skill Level: Beginner  
Number of Blocks: 20  
Block Size: 12" x 12" (finished)



24184 L



24184 Z



24185 H



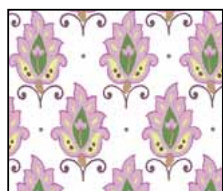
24185 L



24186 H



24186 L



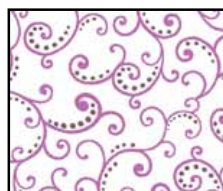
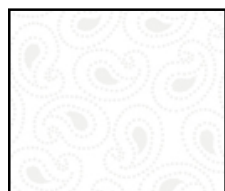
24186 Z

24187 L  
(includes binding)

24187 V



24187 ZH

24187 ZL  
(backing only)

21519 Z

## Cutting Instructions

*Note: A widthwise cut (WOF) is from selvage to selvage. Cut and subcut in order as given as several subcuts are from the remains of previously cut strips.*

### 24184 L: Fabric A (lavender paisley print)

#### Block A (colorway 4)

- Cut (1) 8½" x WOF strip. Subcut (2) 8½" squares. Reserve remaining fabric.

#### Block B (colorway 1)

- From reserved fabric, cut (3) 4½" x 8½" rectangles.
- Cut (1) 4½" x WOF strip. Subcut (3) 3½" x 4½" rectangles. Subcut (3) 3" x 4" rectangles.

FABRIC REQUIREMENTS	
Design	Yards
24184 L	½
24184 Z	1½
24185 H	⅝
24185 L	⅓
24186 H	⅓
24186 L	½
24186 Z	1
24187 L*	1
24187 V	¼
24187 ZH	1¾
24187 ZL**	5½
21519 Z	2
81" x 96" piece of batting	
Basic sewing supplies	
*includes binding	
**backing only	

### 24184 Z: Fabric B (white paisley print)

#### Block A (colorway 2)

- Cut (2) 8½" x WOF strips. Subcut (5) 8½" squares. Reserve remaining fabric.

#### Block B (colorway 4)

- From reserved fabric, cut (1) 4½" x 8½" rectangle. Subcut (1) 3½" x 4½" rectangle. Subcut (1) 3" x 4" rectangle.

#### Outer Border

- Cut (8) 4" x WOF strips. Sew strips together (end to end) using 45° seams to make a continuous strip. Subcut (2) 4" x 76" rectangles. Subcut (2) 4" x 83½" rectangles.

### 24185 H: Fabric C (green toss leaf print)

#### Block A (colorway 1)

- Cut (1) 8½" x WOF strip. Subcut (3) 8½" squares.

#### Block B (colorway 2)

- Cut (1) 4½" x WOF strip. Subcut (1) 4½" x 8½" rectangle. Subcut (1) 3½" x 4½" rectangle. Subcut (1) 3" x 4" rectangle.

#### Block B (colorway 3 and colorway 4)

- Cut (2) 2" x WOF strips. Subcut (2) 2" x 5½" rectangles. Subcut (2) 2" x 6" rectangles. Subcut (2) 2" x 7" rectangles. Subcut (2) 2" x 7½" rectangles.

### 24185 L: Fabric D (lavender toss leaf print)

#### Block A (colorway 3)

- Cut (1) 8½" x WOF strip. Subcut (1) 8½" square.

## 24186 H: Fabric E (green geometric print)

### *Block A (colorway 2)*

- Cut (3) 2" x **WOF** strips. Subcut (10) 2" squares. Subcut (5) 2" x 3½" rectangles. Subcut (5) 2" x 4½" rectangles. Subcut (5) 2" x 7" rectangles.

### *Block A (colorway 6)*

- Cut (1) 2" x **WOF** strip. Subcut (2) 2" squares. Subcut (1) 2" x 3½" rectangle. Subcut (1) 2" x 4½" rectangle. Subcut (1) 2" x 7" rectangle.

## 24186 L: Fabric F (lavender geometric print)

### *Block A (colorway 1)*

- Cut (2) 2" x **WOF** strips. Subcut (6) 2" squares. Subcut (3) 2" x 3½" rectangles. Subcut (3) 2" x 4½" rectangles. Subcut (3) 2" x 7" rectangles.

### *Block A (colorway 6)*

- Cut (1) 8½" x **WOF** strip. Subcut (1) 8½" square. Reserve remaining fabric.

### *Block B (colorway 3)*

- From reserved fabric, cut (1) 4½" x 8½" rectangle. Subcut (1) 3½" x 4½" rectangle. Subcut (1) 3" x 4" rectangle.

## 24186 Z: Fabric G (white geometric print)

### *Block A (colorway 5)*

- Cut (1) 8½" x **WOF** strip. Subcut (2) 8½" squares.

### *Inner Border #3*

- Cut (8) 2½" x **WOF** strips. Sew strips together (end to end) using 45° seams to make a continuous strip. Subcut (2) 2½" x 77½" rectangles. Subcut (2) 2½" x 67" rectangles.

## 24187 L: Fabric H (lavender swirl print)

### *Block A (colorway 4 and 5)*

- Cut (2) 2" x **WOF** strips. Subcut (8) 2" squares. Subcut (4) 2" x 3½" rectangles. Subcut (4) 2" x 4½" rectangles. Subcut (4) 2" x 7" rectangles.

### *Block B (colorway 2)*

- Cut (1) 2" x **WOF** strip. Subcut (1) 2" x 5½" rectangle. Subcut (1) 2" x 6" rectangle. Subcut (1) 2" x 7" rectangle. Subcut (1) 2" x 7½" rectangle.

### *Binding*

- Cut (9) 2½" x **WOF** strips.

## 24187 V: Fabric I (dark purple swirl print)

### *Block A (colorway 3)*

- Cut (1) 2" x **WOF** strip. Subcut (2) 2" squares. Subcut (1) 2" x 3½" rectangle. Subcut (1) 2" x 4½" rectangle. Subcut (1) 2" x 7" rectangle.

### *Block B (colorway 1)*

- Cut (2) 2" x **WOF** strips. From one strip, subcut (3) 2" x 5½" rectangles and subcut (3) 2" x 7½" rectangles. From second

strip, subcut (3) 2" x 6" rectangles and subcut (3) 2" x 7" rectangles.

## 24187 ZH: Fabric J (green swirl on white print)

### *Block A and B (all colorways)*

- Cut (12) 1½" x **WOF** strips. Subcut (20) 1½" x 8½" rectangles. Subcut (20) 1½" x 12½" rectangles.
- Cut (5) 2" x **WOF** strips. Subcut (20) 2" x 3" rectangles. Subcut (20) 2" x 5½" rectangles.
- Cut (5) 3½" x **WOF** strips. Subcut (40) 3½" x 4½" rectangles.

### *Inner Border #2*

- Cut (7) 1½" x **WOF** strips. Sew strips together (end to end) using 45° seams to make a continuous strip. Subcut (2) 1½" x 75½" rectangles. Subcut (2) 1½" x 63" rectangles.

## 24187 ZL: Fabric K (lavender swirl on white print)

### *Backing*

- Prepare Backing to measure 81" x 96".

## 21519 Z: Fabric L (white tonal)

### *Block Sashing*

- Cut (5) 3" x **WOF** strips. Subcut (15) 3" x 12½" rectangles.

### *Block Row Sashing*

- Cut (6) 3" x **WOF** strips. Sew strips together (end to end) using 45° seams to make a continuous strip. Subcut (4) 3" x 56" rectangles.

### *Inner Border #1*

- Cut (7) 3" x **WOF** strips. Sew strips together (end to end) using 45° seams to make a continuous strip. Subcut (2) 3" x 61" rectangles. Subcut (2) 3" x 70½" rectangles.

### *Inner Border #4*

- Cut (8) 1½" x **WOF** strips. Sew strips together (end to end) using 45° seams to make a continuous strip. Subcut (2) 1½" x 69" rectangles. Subcut (2) 1½" x 81½" rectangles.

## Quilt Instructions

### *Block A*

1. Referring to Diagram 1, sew one 2" x 2" Fabric F (lavender geometric print) square and one 2" x 3" Fabric J (green swirl on white print) rectangle together for Unit A1. Unit A1 should measure 2" x 4½".

Diagram 1



2. Referring to Diagram 2 and noting the orientation of the pieces, sew Unit A1 to one 2" x 4½" Fabric F (lavender geometric print) rectangle for Unit A2. Unit A2 should measure 3½" x 4½".

Diagram 2



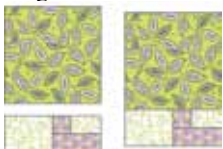
- Referring to Diagram 3 and noting the orientation of the pieces, sew Unit A2 to one  $3\frac{1}{2}$ " x  $4\frac{1}{2}$ " Fabric J (green swirl on white print) rectangle together for Unit A3. Unit A3 should measure  $3\frac{1}{2}$ " x  $8\frac{1}{2}$ ".

Diagram 3



- Referring to Diagram 4 and noting the orientation of the pieces, sew Unit A3 to one  $8\frac{1}{2}$ " x  $8\frac{1}{2}$ " Fabric C (green toss leaf print) square for Unit A. Unit A should measure  $11\frac{1}{2}$ " x  $8\frac{1}{2}$ ".

Diagram 4



- Referring to Diagram 5 and noting the orientation of the pieces, sew one 2" x 2" Fabric F (lavender geometric print) square to one 2" x  $5\frac{1}{2}$ " Fabric J (green swirl on white print) rectangle for Unit B1. Unit B1 should measure 2" x 7".

Diagram 5



- Referring to Diagram 6 and noting the orientation of the pieces, sew Unit B1 to one 2" x 7" Fabric F (lavender geometric print) rectangle for Unit B2. Unit B2 should measure  $3\frac{1}{2}$ " x 7".

Diagram 6



- Referring to Diagram 7 and noting the orientation of the pieces, sew Unit B2 to one 2" x  $3\frac{1}{2}$ " Fabric F (lavender geometric print) rectangle for Unit B3. Unit B3 should measure  $3\frac{1}{2}$ " x  $8\frac{1}{2}$ ".

Diagram 7



- Referring to Diagram 8 and noting the orientation of the pieces, sew Unit B3 to one  $1\frac{1}{2}$ " x  $8\frac{1}{2}$ " Fabric J (green swirl on white print) rectangle for Unit B4. Unit B4 should mea-

sure  $4\frac{1}{2}$ " x  $8\frac{1}{2}$ ".

Diagram 8



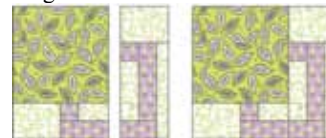
- Referring to Diagram 9 and noting the orientation of the pieces, sew Unit B4 to one  $3\frac{1}{2}$ " x  $4\frac{1}{2}$ " Fabric J (green swirl on white print) rectangle for Unit B. Unit B should measure  $4\frac{1}{2}$ " x  $11\frac{1}{2}$ ".

Diagram 9



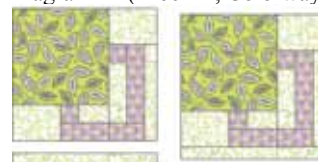
- Referring to Diagram 10 and noting the orientation of the pieces, sew Unit A to Unit B for Unit AB. Unit AB should measure  $11\frac{1}{2}$ " square.

Diagram 10



- Referring to Diagram 11 and noting the orientation of the pieces, sew Unit AB to one  $1\frac{1}{2}$ " x  $12\frac{1}{2}$ " Fabric J (green swirl on white print) for Block A. Block A should measure  $12\frac{1}{2}$ " square. Make a total of three Block A in Colorway 1.

Diagram 11 (Block A, Colorway 1)



- Referring to Diagram 12, repeat steps 1–11 with Fabric B (white paisley print), Fabric E (green geometric print), and Fabric J (green swirl on white print) for Block A in Colorway 2. Make a total of five Block A in Colorway 2. Diagram 12 (Block A, Colorway 2)



- Referring to Diagram 13, repeat steps 1–11 with Fabric D (lavender toss leaf print), Fabric I (dark purple swirl print), and Fabric J (green swirl on white print) for Block A in Colorway 3. Make a total of one Block A in Colorway 3.

Diagram 13 (Block A, Colorway 3)



14. Referring to Diagram 14, repeat steps 1–11 with Fabric A (lavender paisley print), Fabric H (lavender swirl print), and Fabric J (green swirl on white print) for Block A in Colorway 4. Make a total of two Block A in Colorway 4.

Diagram 14 (Block A, Colorway 4)



15. Referring to Diagram 15, repeat steps 1–11 with Fabric G (white geometric print), Fabric H (lavender swirl print), and Fabric J (green swirl on white print) for Block A in Colorway 5. Make a total of two Block A in Colorway 5.

Diagram 15 (Block A, Colorway 5)



16. Referring to Diagram 16, repeat steps 1–11 with Fabric F (lavender geometric print), Fabric E (green geometric print), and Fabric J (green swirl on white print) for Block A in Colorway 6. Make a total of one Block A in Colorway 6.

Diagram 16 (Block A, Colorway 6)



## Block B

17. Referring to Diagram 17 and noting orientation of the pieces, sew one 3" x 4" Fabric A (lavender paisley print) rectangle to one 2" x 3" Fabric J (green swirl on white print) rectangle for Unit A1. Unit A1 should measure 3" x 5½".

Diagram 17



18. Referring to Diagram 18 and noting orientation of the pieces, sew Unit A1 between one 2" x 5½" Fabric I (dark purple tonal) rectangle and one 2" x 5½" Fabric J (green swirl on white print) rectangle for Unit A2. Unit A2 should

measure 6" x 5½".

Diagram 18



19. Referring to Diagram 19 and noting the orientation of the pieces, sew Unit A2 to one 2" x 6" Fabric I (dark purple tonal) rectangle for Unit A3. Unit A3 should measure 6" x 7".

Diagram 19



20. Referring to Diagram 20 and noting the orientation of the pieces, sew Unit A3 to one 2" x 7" Fabric I (dark purple tonal) rectangle for Unit A4. Unit A4 should measure 7½" x 7".

Diagram 20



21. Referring to Diagram 21 and noting the orientation of the pieces, sew Unit A4 to one 2" x 7½" Fabric I (dark purple tonal) rectangle for Unit A5. Unit A5 should measure 7½" x 8½".

Diagram 21



22. Referring to Diagram 22 and noting the orientation of the pieces, sew Unit A5 to one 1½" x 8½" Fabric J (green swirl on white print) rectangle for Unit A6. Unit A6 should measure 8½" x 8½".

Diagram 22



23. Referring to Diagram 23 and noting the orientation of the pieces, sew one 3½" x 4½" Fabric A (lavender paisley print) rectangle to one 3½" x 4½" Fabric J (green swirl on white print) rectangle for Unit A7. Unit A7 should measure 3½" x 8½".

Diagram 23



24. Referring to Diagram 24 and noting the orientation of the pieces, Unit A7 to Unit A6 for Unit A. Unit A should

measure  $8\frac{1}{2}$ " x  $11\frac{1}{2}$ ".

Diagram 24



25. Referring to Diagram 25 and noting the orientation of the pieces, sew one  $4\frac{1}{2}$ " x  $8\frac{1}{2}$ " Fabric A (lavender paisley print) rectangle to one  $3\frac{1}{2}$ " x  $4\frac{1}{2}$ " Fabric J (green swirl on white print) rectangle for Unit B. Unit B should measure  $4\frac{1}{2}$ " x  $11\frac{1}{2}$ ".

Diagram 25



26. Referring to Diagram 26 and noting the orientation of the pieces, sew Unit A to Unit B for Unit AB. Unit AB should measure  $11\frac{1}{2}$ " x  $12\frac{1}{2}$ ". Sew one  $1\frac{1}{2}$ " x  $12\frac{1}{2}$ " Fabric J (green swirl on white print) rectangle to Unit AB for Block B. Block B should measure  $12\frac{1}{2}$ " square. Make a total of three Block B in Colorway 1.

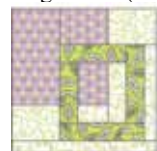
Diagram 26 (Block B, Colorway 1)



27. Referring to Diagram 27, repeat steps 17–26 with Fabric C (green toss leaf print), Fabric H (lavender swirl print), and Fabric J (green swirl on white print) for Block B in Colorway 2. Make a total of one Block B in Colorway 2. Diagram 27 (Block B, Colorway 2)



28. Referring to Diagram 28, repeat steps 17–26 with Fabric F (lavender geometric print), Fabric C (green toss leaf print), and Fabric J (green swirl on white print) for Block B in Colorway 3. Make a total of one Block B in Colorway 3. Diagram 28 (Block B, Colorway 3)



29. Referring to Diagram 29, repeat steps 17–26 with Fabric B (white paisley print), Fabric C (green toss leaf print), and Fabric J (green swirl on white print) for Block B in Colorway 4. Make a total of one Block B in Colorway 4. Diagram 29 (Block B, Colorway 4)



## Quilt Center Assembly

1. *Block Row #1.* Referring to Diagram 30 and noting orientation of the blocks, sew seven pieces together in the following order: Block A Colorway 1, one  $3$ " x  $12\frac{1}{2}$ " Fabric L (white tonal) rectangle, Block A Colorway 2, one  $3$ " x  $12\frac{1}{2}$ " Fabric L (white tonal) rectangle, Block A Colorway 3, one  $3$ " x  $12\frac{1}{2}$ " Fabric L (white tonal) rectangle, Block B Colorway 2 for Block Row 1. Block Row 1 should measure  $12\frac{1}{2}$ " x  $56$ ". Diagram 30



2. *Block Row #2.* Referring to Diagram 31 and noting orientation of the blocks, sew seven pieces together in the following order: Block B Colorway 1, one  $3$ " x  $12\frac{1}{2}$ " Fabric L (white tonal) rectangle, Block B Colorway 3, one  $3$ " x  $12\frac{1}{2}$ " Fabric L (white tonal) rectangle, Block A Colorway 4, one  $3$ " x  $12\frac{1}{2}$ " Fabric L (white tonal) rectangle, Block A Colorway 2 for Block Row 2. Block Row 2 should measure  $12\frac{1}{2}$ " x  $56$ ". Diagram 31



3. *Block Row #3.* Referring to Diagram 32 and noting orientation of the blocks, sew seven pieces together in the following order: Block A Colorway 4, one  $3$ " x  $12\frac{1}{2}$ " Fabric L (white tonal) rectangle, Block A Colorway 2, one  $3$ " x  $12\frac{1}{2}$ " Fabric L (white tonal) rectangle, Block B Colorway 4, one  $3$ " x  $12\frac{1}{2}$ " Fabric L (white tonal) rectangle, Block A Colorway 5 for Block Row 3. Block Row 3 should measure  $12\frac{1}{2}$ " x  $56$ ". Diagram 32



4. *Block Row #4.* Referring to Diagram 33 and noting orientation of the blocks, sew seven pieces together in the following order: Block A Colorway 6, one 3" x 12½" Fabric L (white tonal) rectangle, Block A Colorway 5, one 3" x 12½" Fabric L (white tonal) rectangle, Block A Colorway 1, one 3" x 12½" Fabric L (white tonal) rectangle, Block B Colorway 1 for Block Row 4. Block Row 4 should measure 12½" x 56".  
Diagram 33



5. *Block Row #5.* Referring to Diagram 34 and noting orientation of the blocks, sew seven pieces together in the following order: Block A Colorway 2, one 3" x 12½" Fabric L (white tonal) rectangle, Block B Colorway 1, one 3" x 12½" Fabric L (white tonal) rectangle, Block A Colorway 2, one 3" x 12½" Fabric L (white tonal) rectangle, Block A Colorway 1 for Block Row 5. Block Row 5 should measure 12½" x 56".  
Diagram 34



6. Referring to Quilt Layout Diagram and noting orientation of the rows, sew nine pieces together in the following order: Block Row 1, one 3" x 56" Fabric L (white tonal) rectangle, Block Row 2, one 3" x 56" Fabric L (white tonal) rectangle, Block Row 3, one 3" x 56" Fabric L (white tonal) rectangle, Block Row 4, one 3" x 56" Fabric L (white tonal) rectangle, Block Row 5 for Quilt Center. Quilt Center should measure 56" x 70½".

## Quilt Top Assembly

**Note:** Refer to the Quilt Layout Diagram for the following steps.

- Inner Border #1.* Sew one 3" x 70½" Fabric L (white tonal) rectangle to each long side of the Quilt Center. Sew one 3" x 61" Fabric L (white tonal) rectangle to each short side of the Quilt Center. Quilt Center should measure 61" x 75½".
- Inner Border #2.* Sew one 1½" x 75½" Fabric J (green swirl on white print) rectangle to each long side of the Quilt Center. Sew one 1½" x 63" Fabric J (green swirl on white print) rectangle to each short side of the Quilt Center. Quilt Center should measure 63" x 77½".
- Inner Border #3.* Sew one 2½" x 77½" Fabric G (white geometric print) rectangle to each long side of the Quilt Center. Sew one 2½" x 67" Fabric G (white geometric print) rectangle to each short side of the Quilt Center. Quilt Center should measure 67" x 81½".

- Inner Border #4.* Sew one 1½" x 81½" Fabric L (white tonal) rectangle to each long side of the Quilt Center. Sew one 1½" x 69" Fabric L (white tonal) rectangle to each short side of the Quilt Center. Quilt Center should measure 69" x 83½".
- Outer Border.* Sew one 4" x 83½" Fabric A (lavender paisley print) rectangle to each long side of the Quilt Center. Sew one 4" x 76" Fabric A (lavender paisley print) rectangle to each short side of the Quilt Center for the Quilt Top. Quilt Top should measure 76" x 90½".

## Finishing

- If not already done, prepare Fabric K (lavender swirl on white print) backing to measure 81" x 96".
- Lay out the quilt top right side up on the top of the batting and the wrong side of the backing fabric.
- Baste the layers together and quilt as desired. Trim the backing and batting even with the quilt top.
- Sew the nine 2½" x **WOF** Fabric H (lavender swirl print) strips together (end to end) using 45° seams to make a continuous strip. Fold strip in half lengthwise (with wrong sides together) and press. Bind as desired.

Quilt Layout Diagram



*While all possible care has been taken to ensure the accuracy of this pattern, we are not responsible for printing errors or the way in which individual work varies.*