



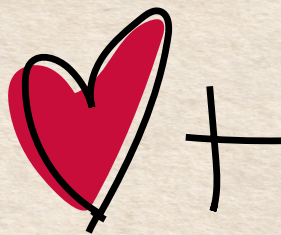
SMALL
WONDERS



BY
MARY FONS



SMALL WONDERS



BY
MARY FON S

POCKET FULL OF YEN

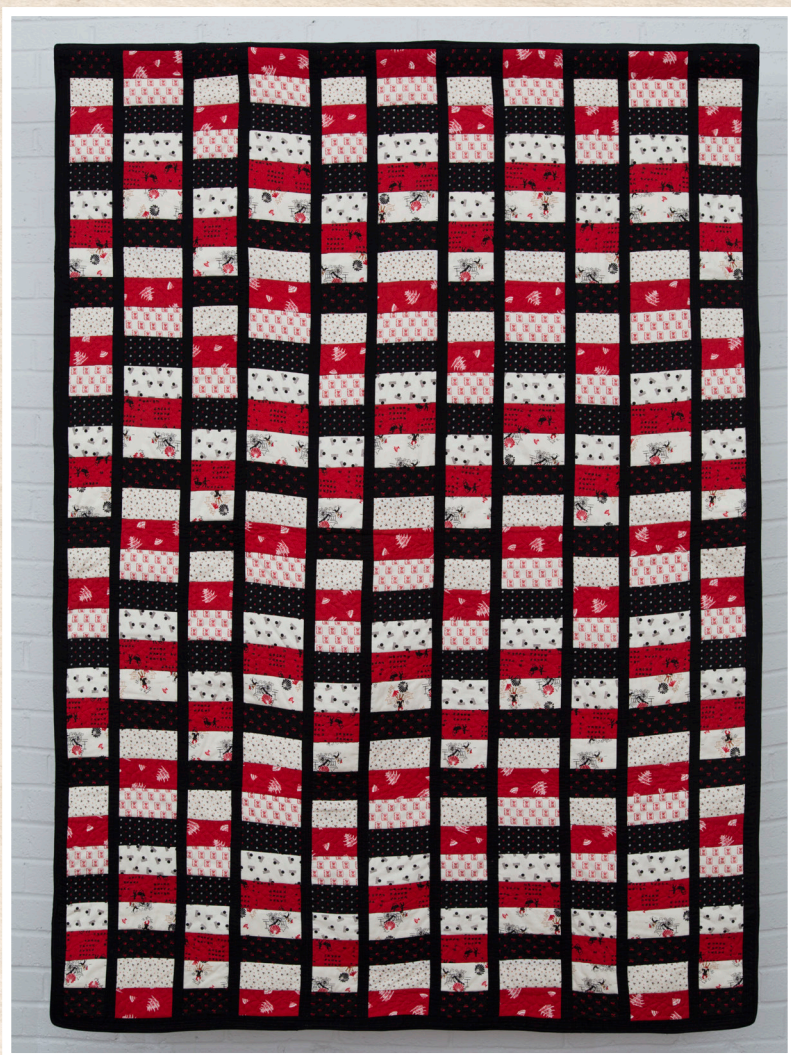
Quilt Instructions

Finished Size: 48" x 68"

MATERIALS

NOTE: *Fabrics in the quilt shown are from the China line of the Mary Fons World Piece collection.*

- 5/8 yards - Red House
- 5/8 yards - Red Chinese Letters
- 1/2 yard - Cream and Red Ditsy
- 1/2 yard - Red Lady and Man
- 1/2 yard - Cream Ditsy
- 1/2 yard - Black Ditsy
- 1/2 yard Black and Cream Ditsy
- 1/2 yard - China Man
- 2 yards - Solid Black
- 108" - Mary Fons Backing Hearts



NOTE: *Every effort to provide accurate patterns has been made, even with testing and editing, mistakes can happen. If you have any questions or concerns about the patterns, please don't hesitate to contact Susan Morgan - susan.morgan@springscreative.com.*

CUTTING

FROM CHINA MAN, CUT:

- (6) 2 1/2" x WOF strips
= Fabric A

FROM RED LADY AND MAN, CUT:

- (6) 2 1/2" x WOF strips
= Fabric B

FROM CREAM AND BLACK DITSY, CUT:

- (6) 2 1/2" x WOF strips
= Fabric C

FROM BLACK DITSY, CUT:

- (6) 2 1/2" x WOF strips
= Fabric D

FROM CREAM AND RED TILES, CUT:

- (6) 2 1/2" x WOF strips
= Fabric E

FROM CREAM DITSY, CUT:

- (6) 2 1/2" x WOF strips
= Fabric F

FROM RED HOUSE, CUT:

- (7) 2 1/2" x WOF strips
= Fabric G

FROM BLACK WITH RED CHINESE LETTERS, CUT:

- (7) 2 1/2" x WOF strips
= Fabric H

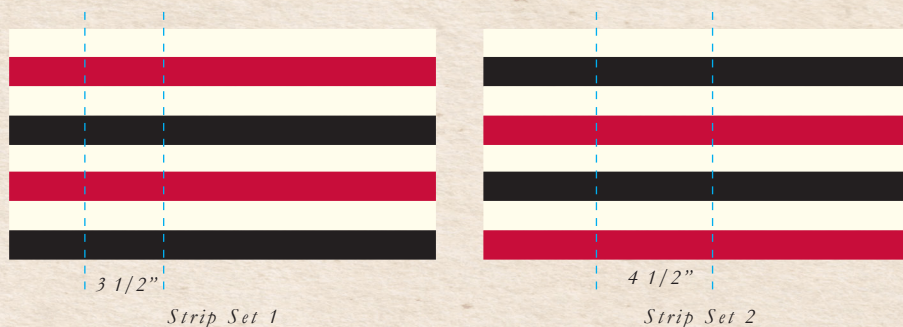
FROM SOLID BLACK, CUT:

- (14) 1 1/4" x length of
fabric, strips for side,
top and bottom sashing.
Balance of the black used
for binding.

UNIT ASSEMBLY

(Press all seams towards the dark fabric)

- Join (8) 2 1/2 strips together horizontally following the strip layout guide
- Make 3 strip sets for each layout using the diagram below



- Sub cut the strip sets as directed below

(24) 3 1/2" wide units
from set 1



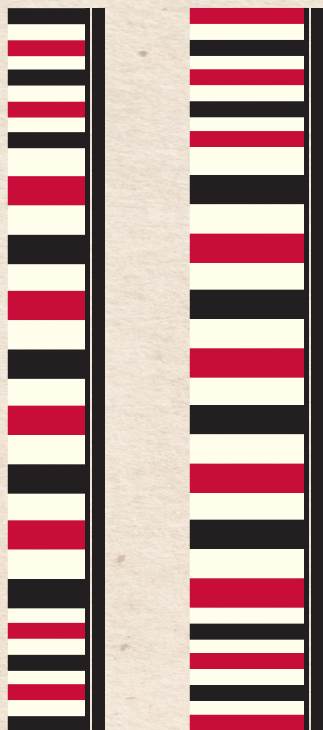
(24) 4 1/2" wide units
from set 2



ROW / BLOCK ASSEMBLY

- Join (4) 3 1/2" wide units vertically to create a row. Repeat to create 6 rows, these will be the odd numbered rows.
- Cut (6) 3 1/2" x 2 1/2" units from the remaining Black with Chinese letter strip. Stitch one to the top of each finished odd numbered row.
- Join (4) 4 1/2" wide units vertically to a row. Repeat to create 5 rows, these will be the even numbered rows.
- Cut (5) 4 1/2" x 2 1/2" units from the remaining Red House strip. Stitch one to the top of each finished even numbered row.

- *Join a side sashing to the right hand side of each row*

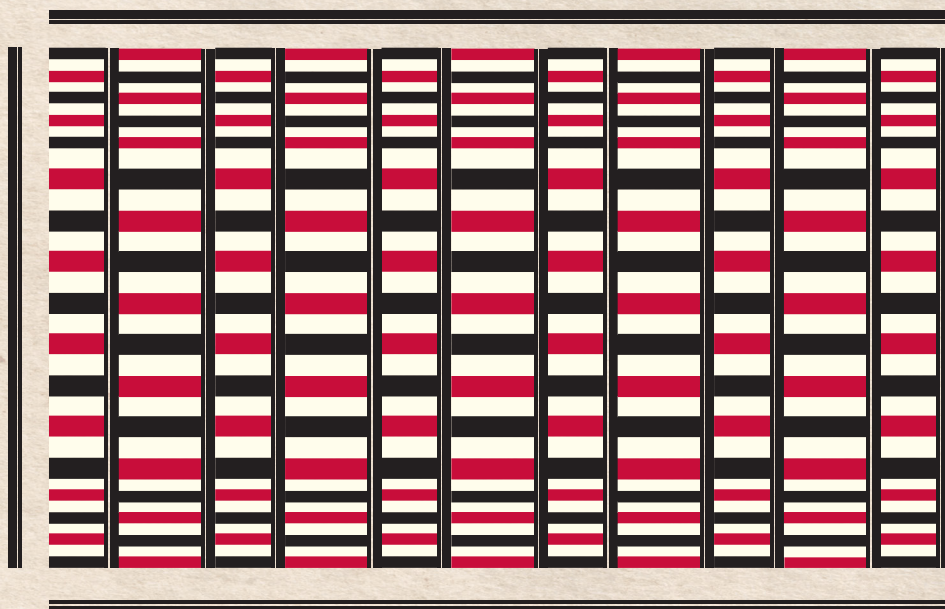


Rows
1, 3, 5, 7, 9, 11

Rows
2, 4, 6, 8, 10

QUILT ASSEMBLY

- *Lay the rows out following the quilt layout*
- *Add the final side sashing to the left hand side of row 1*
- *Join the rows together*
- *Add the top and bottom sashing*



FINISHING

LAYER THE QUILT TOP, BATTING AND BACKING, QUILT AS DESIRED AND BIND

