

**TIMELESS  
TREASURES**



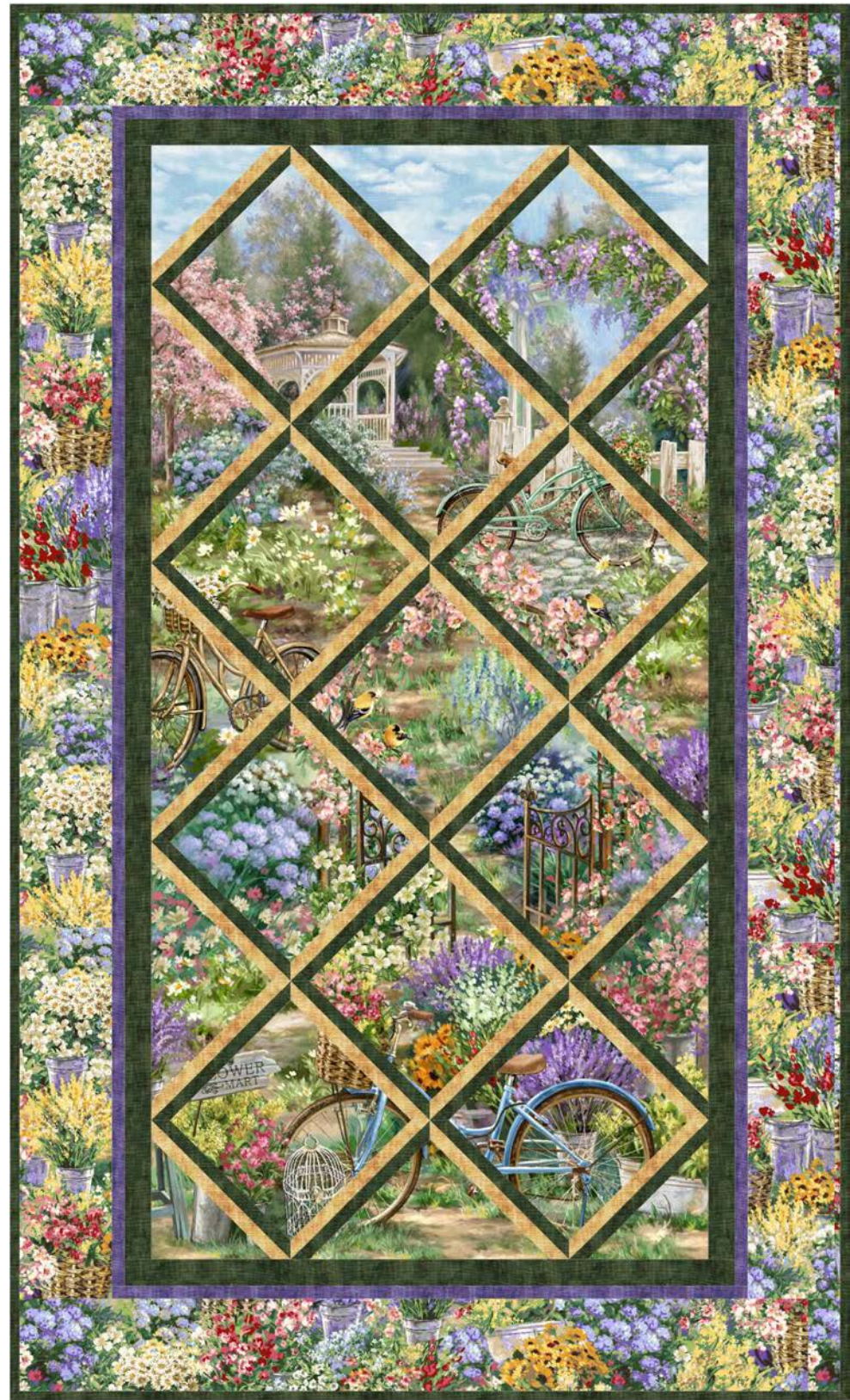
BROOME STREET PATTERNS

# Flower Market

by *Donna Gelsinger*

*Trellis*

Designed by Karen Bialik



Finished quilt size: 31<sup>3</sup>/<sub>4</sub>" x 53"

## Fabric Requirements

- 1 panel (2/3 yard) Dona-C4832 Garden
- 1 1/3 yards Dona-C4833 Flower
- 7/8 yard Studio-C3096 Pine (includes binding)
- 1/3 yard Studio-C3096 Wheat
- 1/3 yard Nature-C4954 Sky
- 1/4 yard Studio-C3096 Purple
- 1 3/4 yards Dona-C4833 Flower (backing)

### Other supplies:

- 40" x 61" batting
- 7" square clear template plastic

## Preparation

Draw diagonal lines from corner to corner across the 7" square template, dividing the template into quarters, but do not cut apart. Use the template for fussy-cutting the panel squares and triangles listed below.

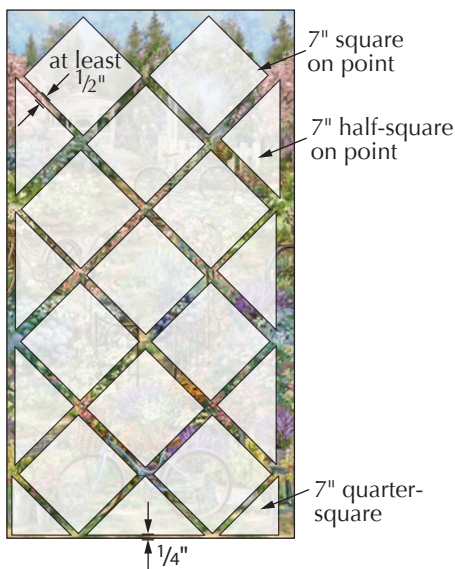
## Cutting

### From Dona-C4832 Garden:

Using a removable marker, draw all fussy-cut pieces on the panel before cutting, leaving 1/2" between the units as shown in Figure 1.

- Fussy-cut eleven 7" squares on point.
- For the right and left side of the quilt center, fussy-cut six half-squares on point, adding 1/4" seam allowance on the outer edge.
- For the bottom of the quilt center, fussy-cut one half-square on point, adding 1/4" seam allowance on the bottom edge.
- For the lower corners of the quilt center, fussy-cut two quarter-squares on point, adding 1/4" seam allowance on the two right angle sides (outer edges) of the triangles.

Fig. 1



### From Dona-C4833 Flower:

- Cut two 4" x 46" length-of-fabric (LOF) strips side outer borders.
- From the remaining fabric width, cut two 4" x 31 3/4" width-of-fabric (WOF) top/bottom outer borders.

### From Studio-C3096 Pine:

- Cut one 7" x WOF strip. Sub-cut thirty-two 1" x 7" strips.
- Cut one 1 1/2" x WOF strip. Sub-cut twelve 1 1/2" squares and twenty 1" squares. Cut six of the 1" squares in half once diagonally to make twelve half-square triangles (HST).
- Cut four 1 1/2" x WOF strips for inner borders.
- Cut five 2 1/2" x WOF strips for binding.

### From Studio-C3096 Wheat:

- Cut one 7" x WOF strip. Sub-cut thirty-two 1" x 7" strips.
- Cut one 1 1/2" x WOF strip. Sub-cut twelve 1 1/2" squares and twenty 1" squares. Cut six of the 1" squares in half once diagonally to make twelve HST.

### From Nature-C4954 Sky:

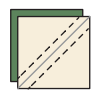
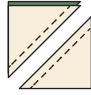

- For the top middle of the quilt center, fussy-cut one half-square on point adding a 1/4" seam allowance on the top edge.
- For the upper corners of the quilt center, fussy-cut two quarter-squares on point adding 1/4" seam allowances on the two right angle sides (outer edges) of the triangles.

### From Studio-C3096 Purple:

- Cut four 1" x WOF strips for middle borders.

## Quilt Top Assembly

All seam allowances are 1/4" and pieces are sewn right sides together.

1. Draw a line diagonally from corner to corner on the wrong side of the twelve 1 1/2" C3096 Wheat squares. With right sides together, place a marked square on top of a 1 1/2" C3096 Pine square. Sew 1/4" on both sides of the drawn line. Cut the triangles apart    Make 24.



on the marked line, open and press the seams open. Make a total of twenty-four half-square triangle (HST) units. (figure 2)

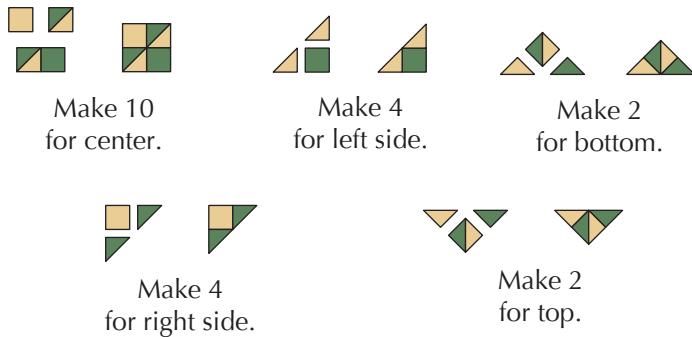
2. Sew the long edges of each 1" x 7" C3096 Wheat strip to a 1" x 7" Studio-C3096 Pine strip. Press seams open. (figure 3)

Fig. 3



3. Sew the sashing cornerstones together following Figure 4 and make the quantity listed for each location.

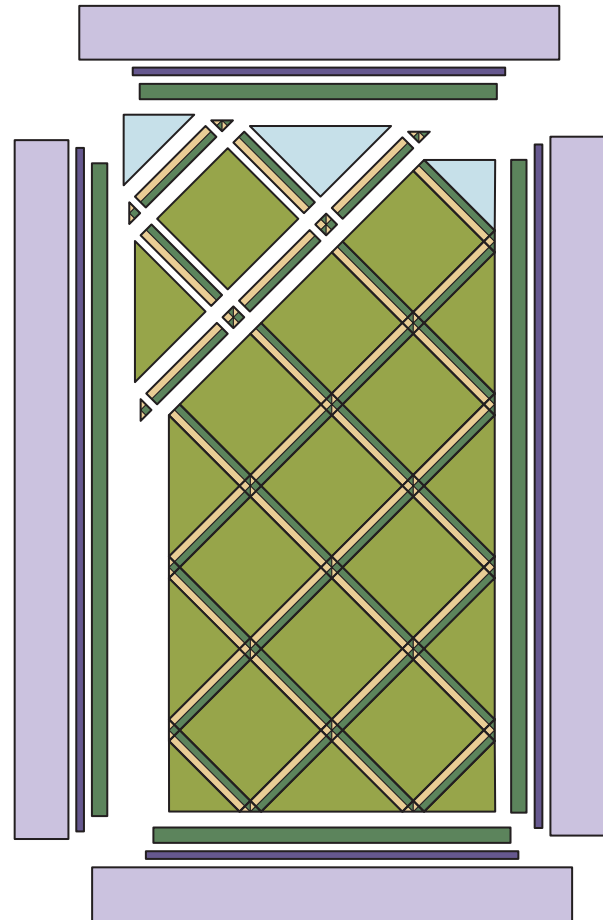
Fig. 4



4. Noting the orientation, sew together the fussy-cut panel units, sashing strips and cornerstones in diagonal rows as shown in the Quilt Assembly Diagram. The quilt center should measure 21 3/4" x 43"; trim if needed.
5. Sew the four 1 1/2" x WOF C3096 Pine strips together end to end using diagonal seams. Cut two side borders 1 1/2" x 43". Sew one to each side of the quilt center. Cut two top/bottom borders 1 1/2" x 23 3/4". Sew one to the top and the other to the bottom of the quilt center.
6. Sew the four 1" x WOF C3096 Purple strips together end to end using diagonal seams. Cut two 1" x 45" side borders. Sew one to each side of the quilt center. Cut two 1" x 24 3/4" top/bottom borders. Sew one to the top and the other to the bottom of the quilt center.
7. Sew one 4" x 46" C4833 Flower strip to each side of the quilt, noting the print direction. Sew one 4" x 31 3/4" C4833 Flower strip to the top and the other to the bottom.

## Finishing

8. Layer the quilt top, batting and backing and quilt as desired.
9. Stitch the binding strips together end to end using diagonal seams. Fold and press the resulting long strip in half lengthwise with wrong sides together. Stitch to the quilt front, matching raw edges and mitering the corners.
10. Fold the binding to the quilt underside and hand-stitch the folded edge to the quilt back.



Quilt Assembly Diagram

Karen Bialik  
www.fabricaddict.net

©2016 Timeless Treasures www.ttfabrics.com  
This pattern is for individual home use only. This pattern may not be reproduced for commercial purposes (i.e., may not be sold).