



HOFFMAN FABRICS
EST.1924

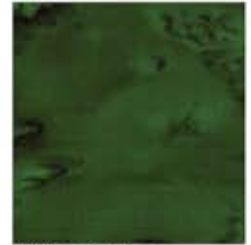


... if you love to quilt or love a quilter.

CRYSTAL TENDRILS

FINISHED QUILT: 61 1/2" x 61 1/2"

CHRISTMAS COLORWAY



1895 141-Pine



1895 365-Tavarua



67-Flame



100 618-Zinc

P4346 60-Hunter

Border patchwork design by Stephanie Prescott of A Quilter's Dream.
Featuring a Crystal Topper digital panel designed by Jeanie Sumrall-Ajero.

Free pattern download available at hoffmanfabrics.com



CRYSTAL TENDRILS

Quilt design by Stephanie Prescott of A Quilter's Dream
61 1/2" x 61 1/2"

Yardage Chart

JEWEL COLORWAY

FABRIC	
P2003 440-Liquorice	1 yard
P2013 600-St. Paddy	5/8 yard
P2030 254-Tahiti	1 yard
P2031 602-Earth Day	5/8 yard
839 136-Peacock	1 1/8 yard*
1895 226-Seaholly	5/8 yard
1895 578-Delta	3/8 yard
P4346 230 Sapphire	1 panel

CHRISTMAS COLORWAY

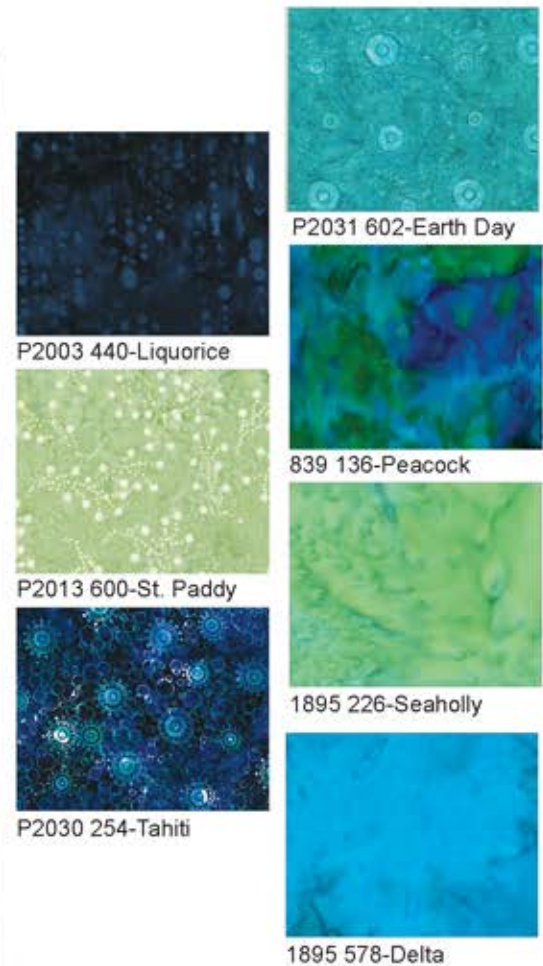
FABRIC	
1895 141-Pine	1 yard
1895 365-Tavarua	1 yard
1895 67-Flame	7/8 yard*
100 618-Zinc	2 1/2 yards
P4346 60-Hunter	1 panel

* Includes binding

JEWEL COLORWAY



P4346 230-Sapphire



Tendrill Border - for quilts and panels

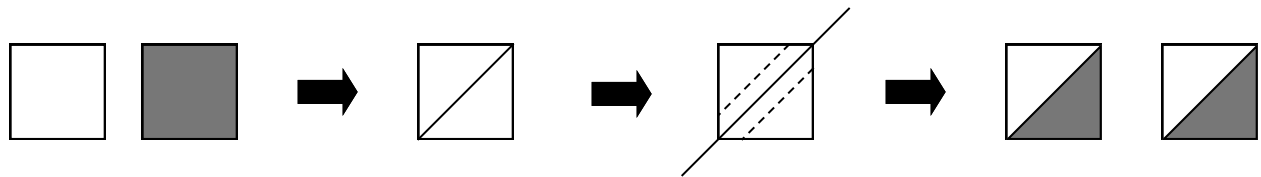
Requirments:

2 border background fabrics -
 1 yard each
 4 tendrill fabrics -
 5/8 yard each
 inner border - 1/2 yard

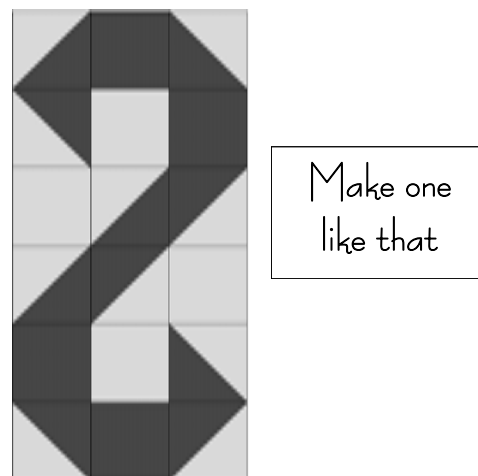
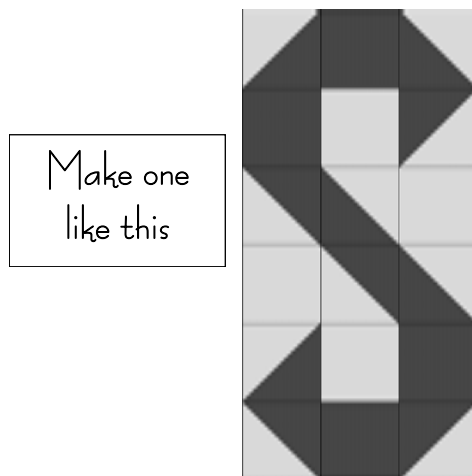
From the (2) border background fabrics :
 cut (25) 4 7/8 inch squares from each.
 cut (20) 4 1/2 inch squares from each
 From the (4) tendrill fabrics:
 cut (15) 4 7/8 inch squares from each.
 cut (10) 4 1/2 inch squares from each

Piecing:

1.) Take (10) 4 7/8 inch squares from one of the border background fabrics and (10) 4 7/8 inch squares from one of the border tendrill fabrics. Place one square of each fabric right sides together and draw a diagonal line on the wrong side of one of the squares. Pin. Stitch a scant 1/4 inch away from both sides of the drawn line. Cut apart on the drawn line and you have 2 sewn half square triangle units! See diagram below. Repeat this process with remaining 4 7/8 units to yield a total of (20) sewn half square triangle units.



2.) Take (8) 4 1/2 squares from the same border background fabric used in step #1 and (8) 4 1/2 inch squares from the same tendrill fabric used in step #1 and the (20) sewn half square triangle units from step #1. Lay out your units as shown and sew together. Note the direction and orientation of the units before sewing. Make one of each block as shown. Each will measure 12 1/2 x 24 1/2



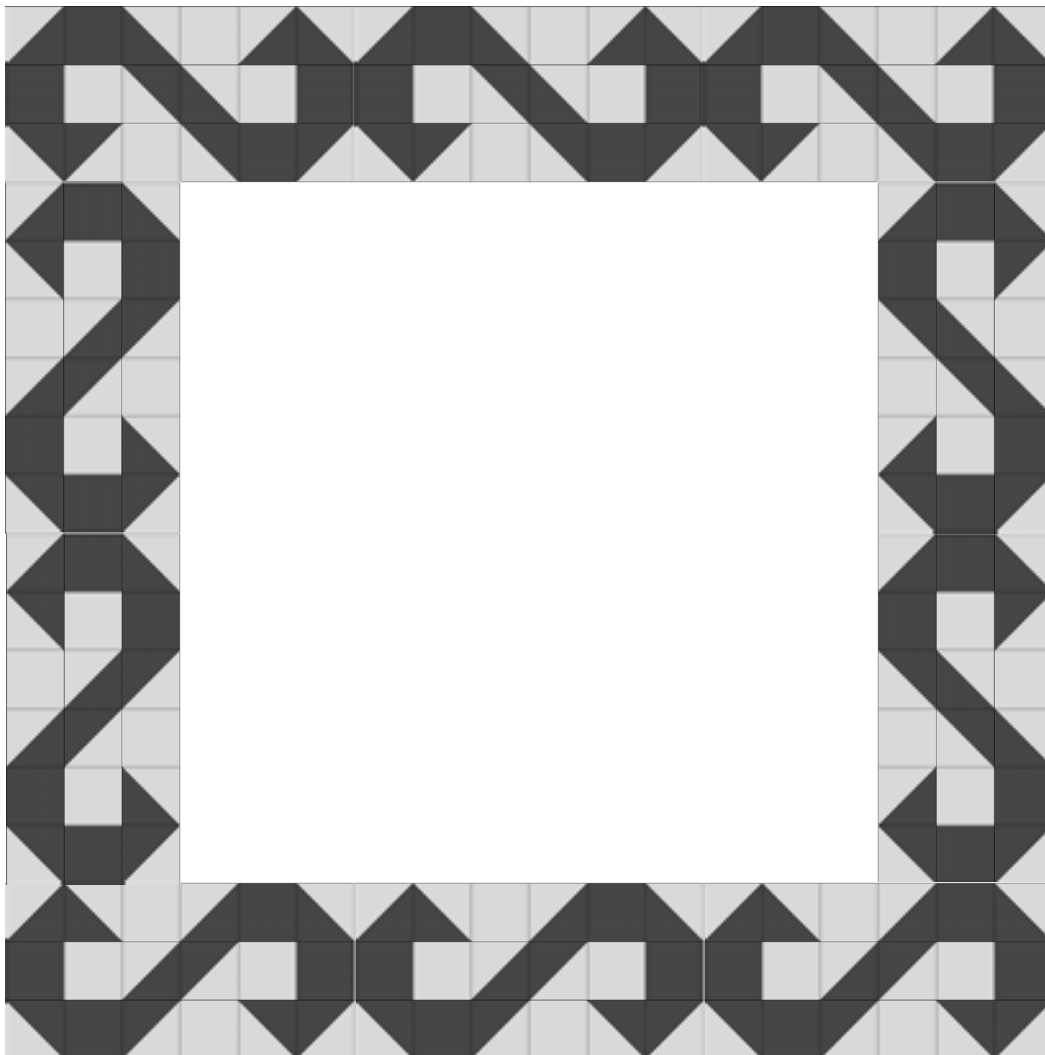
3.) Repeat steps #1 - 2 for the remaining border background and border tendril fabrics to yield a total of (10) blocks (five of each direction) as shown on the previous page.

Note: You will have enough fabric to make 12 border blocks but only need 10. Think of it as insurance.

4.) Measure your quilt center or panel and trim or add border to measure $48\frac{1}{2}$ inches square.

5.) Take (4) border tendril blocks (2 going one direction and 2 going the other) and sew (2) border blocks first end to end and then to the left and right sides of the center. Be sure to look at the diagram for directional placement.

6.) Take the other (6) border tendril blocks sew end to end into sets of 3 (all three going the same direction). Sew these sewn border strips onto the top and bottom of quilt.



Add some easy pizzazz to your panels or enlarge a small quilt with an interesting border that adds to your project.



Featured—Crystal Panel P4346-230 Sapphire



Featured—
 Crystal Panel P4346-60
 Hunter
 2 border backgrounds
 1 yd each
 1 tendril fabric
 1 3/4



Featured—
 American Byways
 Panel
 P4326-66 Autumn
 5 border backgrounds
 2/3 yd each
 5 tendril fabrics
 2/3 yd each