

Boo!

36" x 43"

featuring "Happy Owl-O-Ween" by Sue Marsh for RJR Fabrics

Fabric A #3126-03: 1 1/4 yards

Fabric B #3127-02: 3/4 yard

Fabric C #3127-01: 1/4 yard

Fabric D #3125-01 1/8 yard

Fabric E #3124-01: 1/8 yard

Fabric F #3124-02: 1/8 yard

Fabric G #3125-02: 1/8 yard

Fabric H #4758-112: 1/8 yard

Fabric J #2202-01: 1/8 yard

Fabric K #2203-02: 1/8 yard

Fabric L #4758-08: 1/8 yard

Fabric M #4758-109: 1/8 yard

Fabric N #9617-34: 1/8 yard

Fabric P #3121-01: 1 full repeat

Backing: 1 1/2 yards

Batting: 44" x 51"

Notions: Thread for piecing, appliqué and quilting.

Designed by Christine Stainbrook

Batting used is Warm 100® by The Warm Company

Note: There is no fabric "i" or "o" as they too closely resemble one and zero.

The information in this pattern is presented in good faith.

Every effort has been taken to assure the accuracy herein.

This pattern may not be reproduced in any form, either electronic or hard copy.

The finished product may not be used for mass retail, commercial, or wholesale purposes, markets, or trade shows without written permission.

© 2017 Project House 360

BOO!

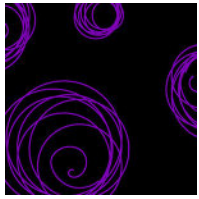


A Project House 360 Quilt Pattern
featuring collections from



BOO!

Color Card



Fabric A
#3126-03



Fabric B
#3127-02



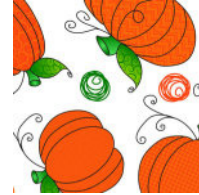
Fabric C
#3127-01



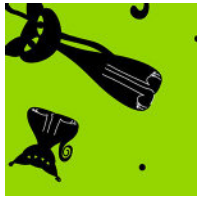
Fabric D
#3125-01



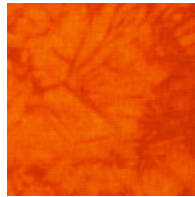
Fabric E
#3124-01



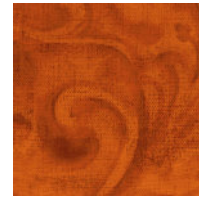
Fabric F
#3124-02



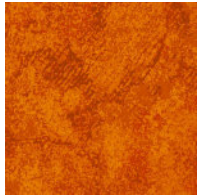
Fabric G
#3125-02



Fabric H
#4758-112



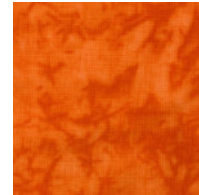
Fabric J
#2202-01



Fabric K
#2203-02



Fabric L
#4758-08



Fabric M
#4758-109



Fabric N
#9617-34



Fabric P
#3121-01

Cutting:

Fabric A:

- 6 - 2" x 4"
- 6 - 2 3/8" squares
- 36 - 2 1/2" squares
- 4 - 1 1/2" x 4 1/2"
- 2 - 2 1/4" x 24 1/2"
- 1 - 16 1/2" x 2 3/4"
- 1 - 16 1/2" x 1 3/4"
- 1 - 2" x 25"
- 1 - 2" x 30 1/2"
- 2 - 2 1/2" x 39 1/2"
- 2 - 2 1/2" x 36 1/2"
- 1 - 1 1/2" x 8"

Fabric B:

- 3 - 1" x 2"
- 3 - leaves
- 3 - 2 1/2" x 4 1/2"

Fabric C:

- 9 - 2" squares
- 2 - 2 3/8" squares
- 3 - 2 1/2" x 4 1/2"

Fabric D:

- 3 - 2 1/2" x 4 1/2"

Fabric E:

- 3 - 2 1/2" x 4 1/2"

Fabric F:

- 3 - 2 1/2" x 4 1/2"

Fabric G:

- 3 - 2 1/2" x 4 1/2"

Fabric H:

- 6 - 2" squares
- 2 - 2 3/8" squares

Fabric J:

- 9 - 2" squares

Fabric K:

- 9 - 2" squares

Fabric L:

- 6 - 2" squares
- 3 - 2 3/8" squares

Fabric M:

- 9 - 2" squares

Fabric N:

- 6 - eyes
- 3 - mouths

Fabric P:

- 1 - 23 1/2" x 30 1/2"
- (fussy cut)

Block A:

Make 3

Cut the fabric A $2\frac{3}{8}$ " squares once diagonally.

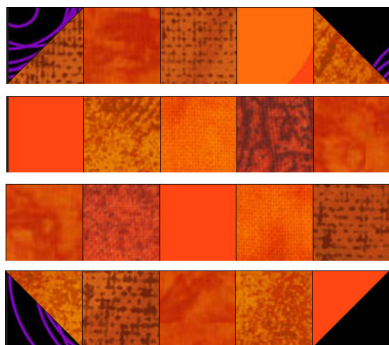
Cut the fabric H $2\frac{3}{8}$ " squares once diagonally, and discard one triangle.

Cut the fabric L $2\frac{3}{8}$ " squares once diagonally.

Cut the fabric C $2\frac{3}{8}$ " squares once diagonally, and discard one triangle.

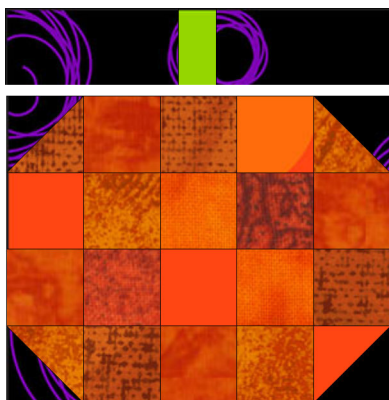
Stitch the remaining orange triangles together in pairs with the fabric A triangles to make twelve half-square triangle units. Square to 2".

Arrange the fabric C, H, J, K, L and M 2" squares as shown in a pleasing arrangement. Add the orange half-square triangle units and stitch together. Square unit to $6\frac{1}{2}$ " x 8".



Stitch one fabric B 1" x 2" rectangle to two fabric A 2" x 4" rectangles. Square to 2" x 8".

Add to the orange pieced unit. Block should measure 8" square.



Prepare pieces for appliqué, using your favorite method. Arrange on the block as shown and appliqué in place.



Block B:

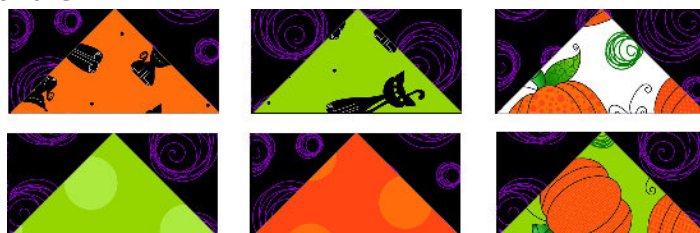
Make 3 of each combination

Draw a diagonal line on 36 fabric A $2\frac{1}{2}$ " squares. Stitch one fabric A square to one end of one fabric D $2\frac{1}{2}$ " x $4\frac{1}{2}$ " rectangle, stitching on the drawn line.

Cut away excess, leaving a $\frac{1}{4}$ " seam allowance. Press triangle outward. Repeat on the other end of the rectangle. Trim geese unit to $2\frac{1}{2}$ " x $4\frac{1}{2}$ ".



Make three of each fabric, using fabrics B, C, D, E, F and G.



Stitch the geese units together as shown. One strip has eleven geese and the other strip has seven geese.

On the eleven geese strip, add one fabric A $1\frac{1}{2}$ " x $4\frac{1}{2}$ " rectangle to each short end of the strip. Stitch one fabric A $2\frac{1}{4}$ " x $24\frac{1}{2}$ " rectangle to each long side of the strip. Trim to 8" x $24\frac{1}{2}$ ".

On the seven geese strip, add one fabric A $1\frac{1}{2}$ " x $4\frac{1}{2}$ " rectangle to each short end of the strip. Add the fabric A $2\frac{3}{4}$ " x $16\frac{1}{2}$ " strip to the top of the geese strip. Add the fabric A $1\frac{3}{4}$ " x $16\frac{1}{2}$ " strip to the bottom of the geese strip. Trim to 8" x $16\frac{1}{2}$ ".



Assembly:

Stitch one fabric A 2" x 30 1/2" strip to the right side of the fabric P rectangle. Stitch one fabric A 2" x 25" strip to the bottom of the block.

Stitch one block A to the top of the long geese strip.

Add to the quilt as shown.

Stitch one fabric A 1 1/2" x 8" rectangle, one block A, the short geese strip and one block A together into a row. Add to the bottom of the quilt.

Stitch one fabric A 2 1/2" x 39 1/2" strip to each side of the quilt. Stitch one fabric A 2 1/2" x 36 1/2" strip to the top and bottom of the quilt.

Layer, baste and quilt as desired.

Bind with fabric B.



Full-Size Templates
NOT REVERSED
NO SEAM ALLOWANCE INCLUDED

