

Checkmate

Designed by Diane Nagle
Featuring Pauline by Atelier Perdu
SIZE: 62" x 73"



FREE
PROJECT

THIS IS A DIGITAL REPRESENTATION OF THE QUILT TOP, FABRIC MAY VARY.

PLEASE NOTE: BEFORE MAKING YOUR PROJECT, CHECK FOR ANY PATTERN UPDATES AT WINDHAMFABRICS.COM'S FREE PROJECTS SECTION.



Star Gazer

| KEY | FABRIC | SKU | YD | CUTTING INSTRUCTIONS |
|-----|--------|---------------|-------|---|
| A | | 43423-4 Cream | 1 1/8 | (1) 9 1/2" x 42" strip; cut into (28) 1 1/2" x 9 1/2" strips. (1) 8 1/2" x 42" strip; cut into (28) 1 1/2" x 8 1/2" strips. (1) 1 1/2" x 42" strip; cut into (2) 1 1/2" x 9 1/2" and (2) 1 1/2" x 8 1/2" strips. (4) 3 1/4" x 42" strips; cut into (45) 3 1/4" squares, cut twice on diagonal. (2) 1 7/8" x 42" strips; cut into (30) 1 7/8" squares, cut once on diagonal. |
| B | | 43422-2 Blue | 3/4 | (3) 4 3/4" x 42" strips; cut into (60) 1 7/8" x 4 3/4" rectangles. (6) 1 7/8" x 42" strips; cut into (120) 1 7/8" squares. |
| C | | 43424-3 Tan | 1/4 | (1) 4 3/4" x 42" strip; cut into (15) 1 7/8" x 4 3/4" rectangles. (1) 1 7/8" x 42" strips; cut into (30) 1 7/8" squares. |
| D | | 43421-3 Tan | 7/8 | (5) 3 1/2" x 42" strips; cut into (60) 3 1/2" squares. (2) 4 1/4" x 42" strips; cut into (15) 4 1/4" squares, cut twice on diagonal. |
| E | | 43420-1 Red | 1/2 | (4) 4 1/4" x 42" strips; cut into (30) 4 1/4" squares, cut twice on diagonal. |
| F | | 43421-4 Cream | 1/4 | (2) 4 1/4" x 42" strips; cut into (15) 4 1/4" squares, cut twice on diagonal. |
| G | | 43417-1 Red | 1/2 | (2) 2 1/2" x 42" strips; cut into (15) 3 1/2" squares. |
| H | | 43417-2 Blue | 1/2 | (2) 3 1/2" x 42" strips; cut into (20) 2 1/2" squares. |
| I | | 43418-4 Cream | 1 1/4 | (4) 9 1/2" x 42" strips; cut into (49) 2 1/2" x 9 1/2" strips. |
| J | | 43421-4 Cream | 1 1/2 | (7) 5" x 42" strips. Sew end to end and cut (2) 5" x 64 1/2" strips and (2) 5" x 62 1/2" strips. |
| K | | 43424-1 Red | 5/8 | (7) 2 1/2" x 42" binding strips. |
| | | Backing | 4 | |
| | | | | |

Note: It is very important to mark and store the cut pieces according to size, as this will make it much easier when you start piecing.



Star Gazer

Block Assembly

Star Block:

1. Sew the short sides of a Fabric E and D $4\frac{1}{4}$ " triangle together as shown below.



2. Sew the short sides of a Fabric F and E $4\frac{1}{4}$ " triangle together as shown below.

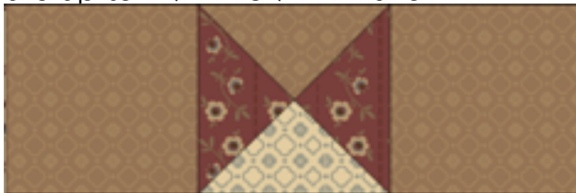


3. Sew the pieced triangles from Steps 1 and 2 together on long diagonal sides to make a Quarter Square Triangle (QST). Square up to $3\frac{1}{2}$ ". Make 4.



QST -->

4. Sew a Fabric D $3\frac{1}{2}$ " square to both sides of a QST from Step 3 to make Row 1 of the Star Block. Square up to $9\frac{1}{2}$ " x $3\frac{1}{2}$ ". Make 2.



Row 1 -->

5. Sew the Fabric F side of a QST from Step 3, to both sides of a Fabric G fussy cut $3\frac{1}{2}$ " square to make Row 2 of the Star Block. Square up to $9\frac{1}{2}$ " x $3\frac{1}{2}$ ".



6. Sew a Row 1 from Step 4 to the top of Row 2. Rotate and sew the remaining Row 1 to the bottom of Row 2 to complete the block. Square up to $9\frac{1}{2}$ ". Make 15.

Star Block -->





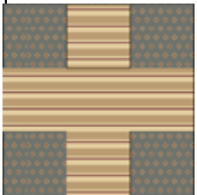
Star Gazer

Cross Block: Sew a scant $\frac{1}{4}$ " seam allowance for this block.

7. Sew a Fabric B $1\frac{7}{8}$ " square to both sides of a Fabric C $1\frac{7}{8}$ " square. Square up to $1\frac{7}{8}$ " x $4\frac{3}{4}$ ". Make 2.



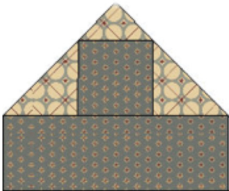
8. Sew a unit from Step 7 to both long sides of a Fabric C $1\frac{7}{8}$ " x $4\frac{3}{4}$ " rectangle to make a 9 patch block center. Sew aside.



9. Sew the short sides of a Fabric A $3\frac{1}{4}$ " triangle to a Fabric B $1\frac{7}{8}$ " square.



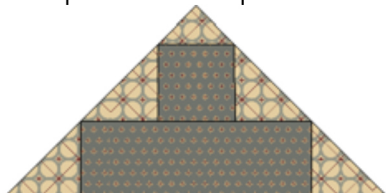
10. Sew the long side of a Fabric A $1\frac{7}{8}$ " triangle to the top of the unit in Step 9. Sew a Fabric B $1\frac{7}{8}$ " x $4\frac{3}{4}$ " rectangle to the bottom. Make 2.



11. Sew the unit in Step 10 to both sides of the 9-patch unit in Step 8. This is the middle row of the block. Set aside.



12. Repeat Step 10, and sew the short side of a Fabric A $3\frac{1}{4}$ " triangle to both sides of the unit to complete a new pieced triangle. Make 2.





Star Gazer

13. Sew the long side of the pieced triangle in Step 12 to the top and bottom of the middle row in Step 11 to complete the block center. Square up to 8 1/2". If your block is a little off in size, the outer borders will compensate for it.



14. Sew the Fabric A 1 1/2" x 8 1/2" strips to 2 opposite sides of the block. Sew the 1 1/2" x 9 1/2" strips to the remaining 2 sides. Square up the block to 9 1/2". Make 15.



Cross Block -->

Quilt Assembly

Sashing Rows

15. Sashing rows will consist of (5) Fabric I 2 1/2" x 9 1/2" Sashing rectangles with (4) Fabric H 2 1/2" squares sewn in between the rectangles as shown. Make 5.



Assembly of Row:

16. The quilt center is made of 6 horizontal rows of 5 blocks each, with sashing in between each block, and sashing rows in between each block row.

17. Following diagram for placement and rotation of each block, sew each row in the order stated from left to right.

18. Cross Block Row: Sew the long side of a Fabric I 2 1/2" x 9 1/2" Sashing rectangle in between each block. Row 1 will be sewn with (3) Cross Blocks and (2) Star Blocks with sashing only between each block as shown. Make 3.





Star Gazer

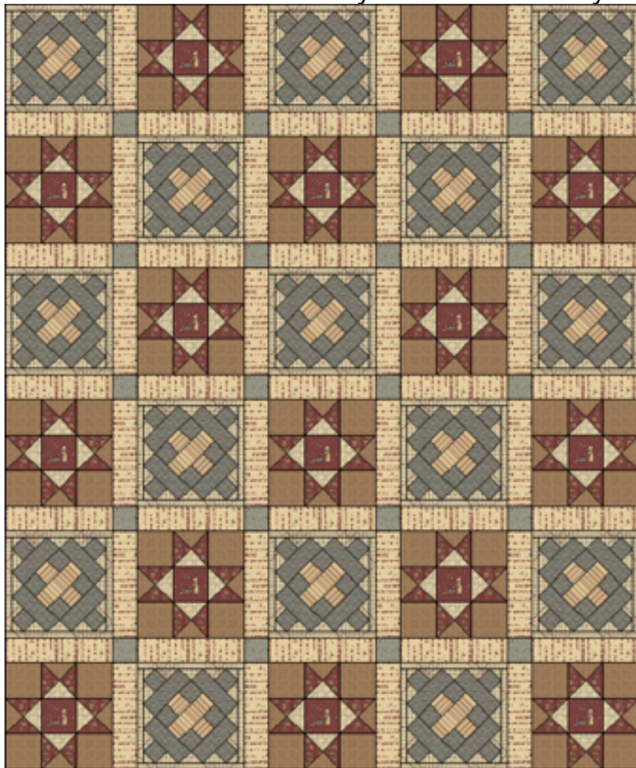
19. Star Block Row: Sew the long side of a Fabric I $2\frac{1}{2}'' \times 9\frac{1}{2}''$ Sashing rectangle in between each block. Row 2 will be sewn with (3) Star Blocks and (2) Cross Blocks. Make 3.



20. Starting with a Row 1, sew a Sashing Row to the bottom of Row 1.

21. Sew a Star Block Row 2 to the bottom of the Sashing Row. Continue in this manner, alternating the Rows 1 and 2 with Sashing Rows in between until you have all 6 Block rows with Sashing rows sewn together to make the quilt center.

The diagram below shows all 3 Cross Block Rows alternating with the Star Block Rows and Sashing Rows in between. When you are finished you will have 6 Horizontal block rows with Sashing.



Outer Border:

23. Sew the Fabric J $5'' \times 64\frac{1}{2}''$ strips to the sides of the quilt. Sew the Fabric J $5'' \times 62\frac{1}{2}''$ strips to the top and bottom of the quilt.

24. Layer the quilt top with batting and backing; quilt as desired. Using the Fabric K $2\frac{1}{2}''$ strips, bind the edges to finish.