

A Day At The Lake

By Laura
Marshall

Throw Quilt: 54" x 72"



Bonus Project
18" Square Pillow



www.wilmingtonprints.com/projects

Wilmington Prints: A World of Possibilities

A Day at the Lake

Please read all instructions carefully AND identify all fabrics before beginning.

All instructions include a 1/4" seam allowance and strips are cut selvage to selvage, unless stated otherwise.

1. Cut the following:

Fabric A - Fussy cut (2) 1-1/2" x 18-1/2" stripe strips from selvage edges of panel (pillow)

PLEASE NOTE: Panels do not always print the size intended. For this pattern, panels have a coping border added then trimmed so they will fit the quilt correctly.

Fussy cut 1/4" beyond outside edges of 4 panels to approximately 11-1/2" x 16-1/2"


Fabric B - Referring to the quilt image, fussy cut strips, the length of fabric parallel to selvage: (2) 9-1/2" x 54-1/2" multi-stripe borders (1 border with paddle stripe on top, 1 border with paddle stripe on bottom)

Cut (3) 6" x 18-1/2" blue stripe pieces (pillow)

Fabric C - Cut (1) 6-1/2" strip, subcut (1) 6-1/2" square and (2) 3-1/2" x 12-1/2" strips

Cut (2) 3-1/2" strips, subcut (6) 3-1/2" x 12-1/2" strips

Fabric D - Cut (3) 3-1/2" strips, subcut (8) 3-1/2" x 12-1/2" strips


Fabric E - Cut (1) 7-1/4" strip, subcut (1) 7-1/4" square then cut in half diagonally twice  for 4 triangles

Cut remaining 7-1/4" strip into (2) 3-1/2" strips, subcut (16) 3-1/2" squares

Cut (1) 3-1/2" strip, subcut (12) 3-1/2" squares

Fabric F - Cut (2) 3-1/2" strips, subcut (8) 3-1/2" x 6-1/2" strips and (4) 3-1/2" squares


Cut (7) 2-1/2" strips (binding)

Fabric G - Cut (1) 7-1/4" strip, subcut (1) 7-1/4" square then cut in half diagonally twice  for 4 triangles

Cut remaining 7-1/4" strip into (2) 3-1/2" strips, subcut (8) 3-1/2" x 6-1/2" strips

Cut (1) 3-1/2" strip, subcut (8) 3-1/2" squares

Fabric H - Cut (3) 3-1/2" strips, subcut (6) 3-1/2" x 18-1/2" strips

Fabric I - Cut (1) 6-7/8" strip, subcut (2) 6-7/8" squares then cut in half diagonally  **only as shown** for 4 triangles

Cut remaining 6-7/8" strip into (3) 1-3/4" strips, subcut (6) 1-3/4" x 11-3/4" strips

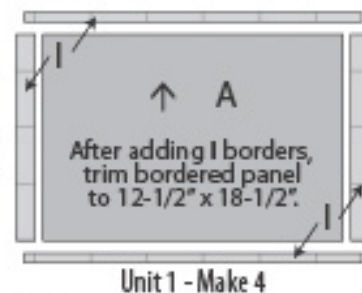
Cut (3) 3-1/2" strips, subcut (2) 3-1/2" x 18-1/2" strips and (24) 3-1/2" squares

Cut (1) 1-3/4" strip, subcut (2) 1-3/4" x 11-3/4" strips

Cut (4) 1-1/4" strips, subcut (8) 1-1/4" x 19" strips

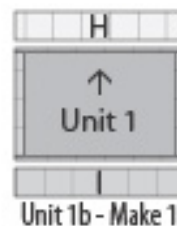
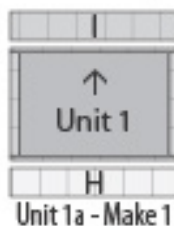
2. Piecing Order for Quilt:

1. Stitch **Fabric I** 1-3/4" x 11-3/4" strips to sides of a **Fabric A** panel. Trim strip ends even. Add 1-1/4" x 19" **Fabric I** strips to top and bottom of panel. **Trim bordered panel to 12-1/2" x 18-1/2"** (unfinished). Make a total of 4 Unit 1.



Arrows and stripes indicate orientation of directional prints.

2. Sew 3-1/2" x 18-1/2" strips to top and bottom of each Unit 1 using fabrics indicated for 1 each **Blocks 1a** and **1b** and 2 **Block 1c** (18-1/2" square unfinished).



3. Arrange 2 each **Fabrics E** and **I** 3-1/2" squares in 2 rows. Stitch into rows. Sew rows together. Make a total of 4 Unit 2 (6-1/2" square unfinished).

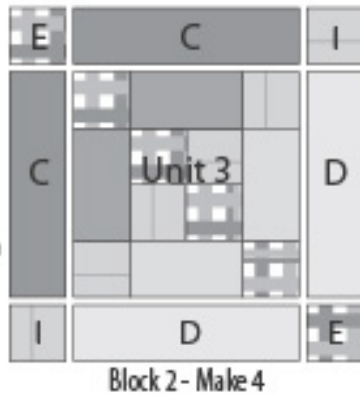


A Day at the Lake

4. Arrange 2 each **Fabrics E** and **I** 3-1/2" squares, 2 each **Fabrics F** and **G** 3-1/2" x 6-1/2" strips, and 1 Unit 2 in 3 rows. Stitch into rows. Sew rows together. Make a total of 4 Unit 3 (12-1/2" square unfinished).



5. Arrange 2 each **Fabrics E** and **I** 3-1/2" squares, 2 each **Fabrics C** and **D** 3-1/2" x 12-1/2" strips, and 1 Unit 3 in 3 rows. Stitch into rows. Sew rows together. Make a total of 4 **Block 2** (18-1/2" square unfinished).



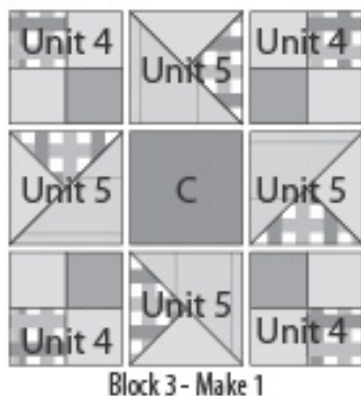
6. Arrange 2 **Fabric G** and 1 each **Fabrics E** and **F** 3-1/2" squares in 2 rows. Stitch into rows. Sew rows together. Make a total of 4 Unit 4 (6-1/2" square unfinished).



7. Stitch 1 each **Fabrics E** and **G** 7-1/4" triangles together as shown. Add a **Fabric I** 6-7/8" triangle as shown. Make a total of 4 Unit 5 (6-1/2" square unfinished).



8. Arrange a **Fabric C** 6-1/2" square and 4 each Units 4 and 5 in 3 rows. Stitch into rows. Sew rows together to complete **Block 3** (18-1/2" square unfinished).



9. Refer to Quilt Layout (Page 3) for arrangement and placement of blocks and borders.

10. Arrange blocks in 3 rows. Stitch into rows. Sew rows together completing quilt center (54-1/2" square unfinished).

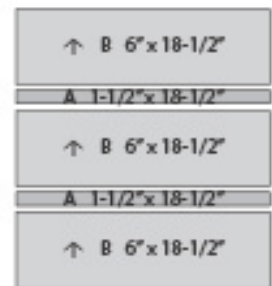
11. Sew **Fabric B** 9-1/2" x 54-1/2" borders to top and bottom of quilt center.

12. The quilt measures approximately 54-1/2" x 72-1/2" (unfinished). Make backing (**Fabric K**) approximately 8" larger than the top.

13. Layer and baste top, batting, and backing together. Quilt as desired. Attach binding (**Fabric F**) and enjoy!!

3. Piecing Order for Pillow:

1. Sew **Fabric A** 1-1/2" x 18-1/2" strips lengthwise together with **Fabric B** 6" x 18-1/2" strips, alternating fabrics. Trim pillow top to 18-1/2" square unfinished).



Pillow Top - Make 1

2. Line pillow top with a piece of quilt batting a little larger than the top. Quilt as desired. Trim excess batting.

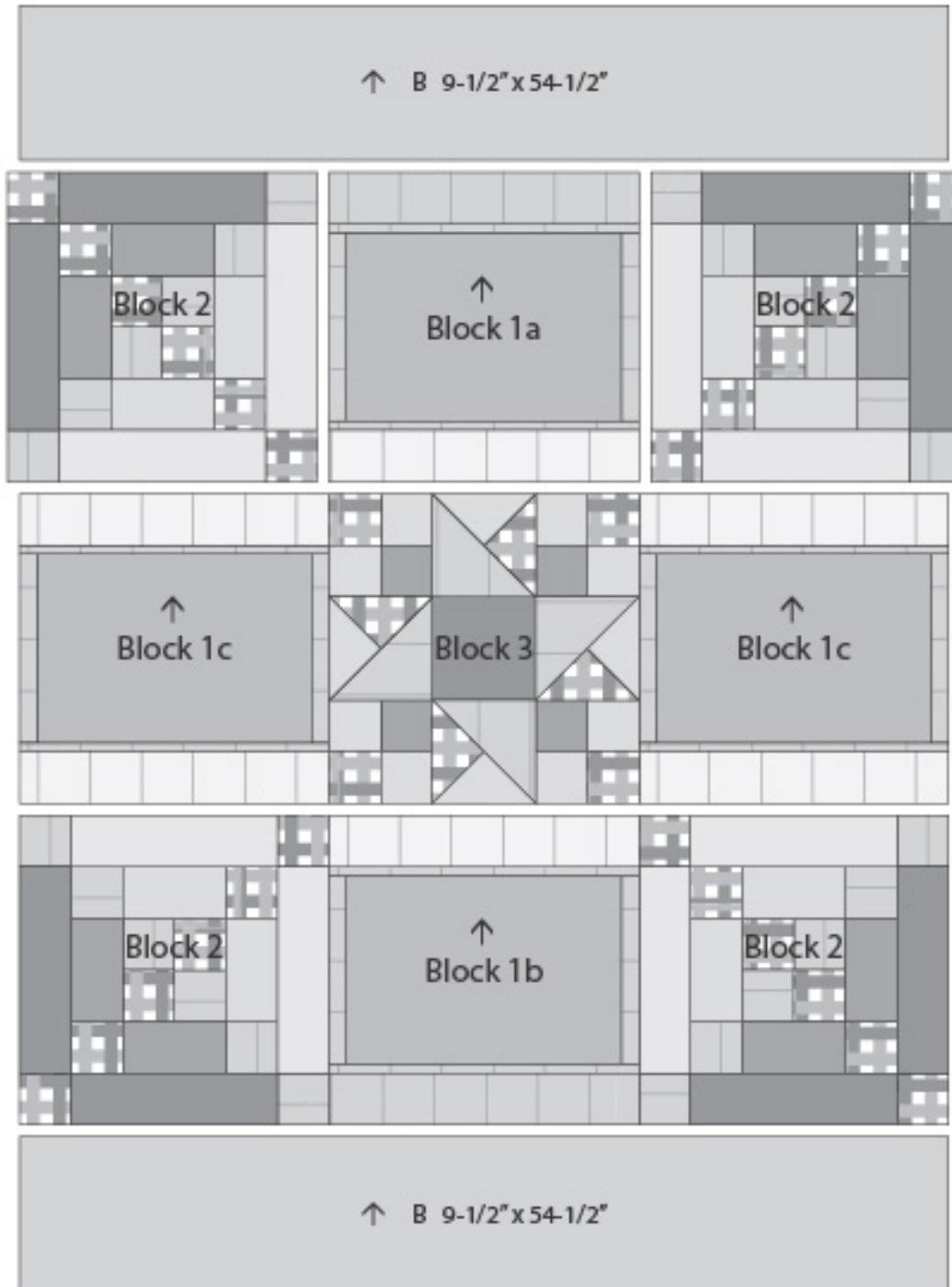
3. Cut pillow back (**Fabric K**) 18-1/2" square. Place pillow top and back right sides together with all edges even. Sew around all sides, leaving a 10" opening on one side. Turn right sides out. Insert an 18" pillow form. Hand stitch the opening closed.

A Day at the Lake

QUILT LAYOUT

Border measurements are the cut size.

Arrows and stripes indicate orientation of directional prints.



3019

A Day At The Lake

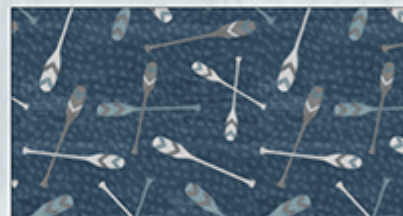
By Laura Marshall



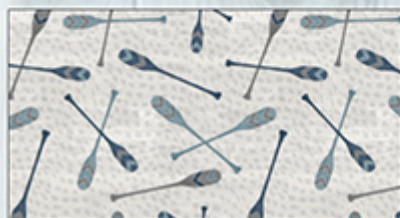
Fabric A 3019-59101-949
2/3 yd. (1 Panel)



Fabric B
3019-59102-449
1 3/4 yds.



Fabric C
3019-59104-449
1/2 yd.



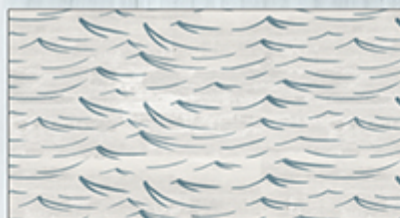
Fabric D
3019-59104-949
1/2 yd.



Fabric E
3019-59105-949
1/2 yd.



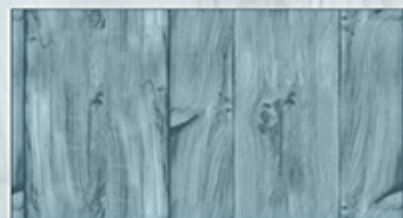
Fabric F
3019-59106-494
1 yd. (incl. binding)



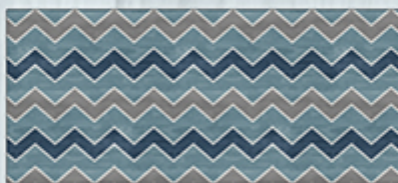
Fabric G
3019-59106-949
1/2 yd.



Fabric H
3019-59109-199
1/2 yd.



Fabric I
3019-59109-441
1 yd.



Fabric J
3019-59107-419
4 1/8 yds.
(backing only - incl. pillow)

