

3000

Safari, So Goodie

by Hello Angel



Throw Quilt: 52 1/2" Square



www.wilmingtonprints.com

Wilmington Prints: A World of Possibilities

Safari, So Goodie

Please read all instructions carefully AND identify all fabrics before beginning.

All instructions include a 1/4" seam allowance and strips are cut selvage to selvage, unless stated otherwise.

1. Cut the following:

Fabric A - PLEASE NOTE: Fabric does not always print the size intended. For this pattern, the center image has a coping border added then trimmed to fit the quilt correctly.


Fussy cut to approximately 23-1/2" x 42"

Fabric B - Referring to the quilt image, fussy cut strips, the length of fabric parallel to selvage: (2) 2-1/4" x 53" and

(2) 2-1/4" x 49-1/2" floral burst stripe borders

Fussy cut 4 animal heads 1/4" beyond right and left edges of stripe to approximately 7" x 9-1/2"


Cut (12) 3-1/2" squares

Fabric C - Cut (2) 3-7/8" strips, subcut (18) 3-7/8" squares then cut in half diagonally for 36 triangles 

Cut (2) 2-3/4" strips, subcut (2) 2-3/4" x 24" strips

Fabric D - Cut (1) 3-1/2" strip, subcut (6) 3-1/2" squares

Cut (6) 2-1/2" strips (binding)

Fabric E - Cut (2) 3-7/8" strips, subcut (18) 3-7/8" squares then cut in half diagonally for 36 triangles 

Cut (3) 3" strips, sewn together end to end and cut into (2) 3" x 47" borders

Cut (5) 2-1/2" strips, sewn together end to end and cut into (2) 2-1/2" x 49-1/2" and

(2) 2-1/2" x 45-1/2" borders

Cut (2) 2" strips, subcut (8) 2" x 9-1/2" strips

2. Piecing Order:

1. Stitch **Fabric E** 2" x 9-1/2" strips to sides of a **Fabric B** 7" x 9-1/2" piece. *Trim to 9-1/2" square (unfinished).* Make a total of 4 **Block 1**.



Block 1 - Make 4

Arrows indicate orientation of directional prints.

2. Sew **Fabrics C** and **E** 3-7/8" triangles together along their long edges. Make a total of 36 units (3-1/2" square unfinished).



Make 36 Units

3. Arrange 6 units and 3 **Fabric B** 3-1/2" squares in 3 rows. Stitch into rows. Sew rows together.



Block 2 - Make 4



Block 3 - Make 2

Make a total of 4 **Block 2** (9-1/2" square unfinished). In the same manner, make 2 **Block 3** with **Fabric D** squares.

4. Refer to Quilt Layout (Page 2) for arrangement and placement of **Fabric A** piece, strips, blocks, and borders.

5. Stitch **Fabric C** 2-3/4" x 24" strips to short edges of the **Fabric A** piece. Trim strip ends even. Add 3" x 47" **Fabric E** strips to long edges of **Fabric A** piece. *Trim bordered section to 27-1/2" x 45-1/2" (unfinished).*

6. Arrange blocks above and below bordered section. Stitch blocks into rows (9-1/2" x 45-1/2" unfinished). Sew rows and bordered section together into quilt center (45-1/2" square unfinished).

Shading of diagrams may vary depending on fabrics used.

Safari, So Goodie

7. Sew **Fabric E** 2-1/2" x 45-1/2" borders to right and left sides of quilt center. Add **Fabric E** 2-1/2" x 49-1/2" borders to top and bottom of quilt center.

8. Sew **Fabric B** 2-1/4" x 49-1/2" borders to right and left sides of quilt. Add **Fabric B** 2-1/4" x 53" borders to top and bottom of quilt.

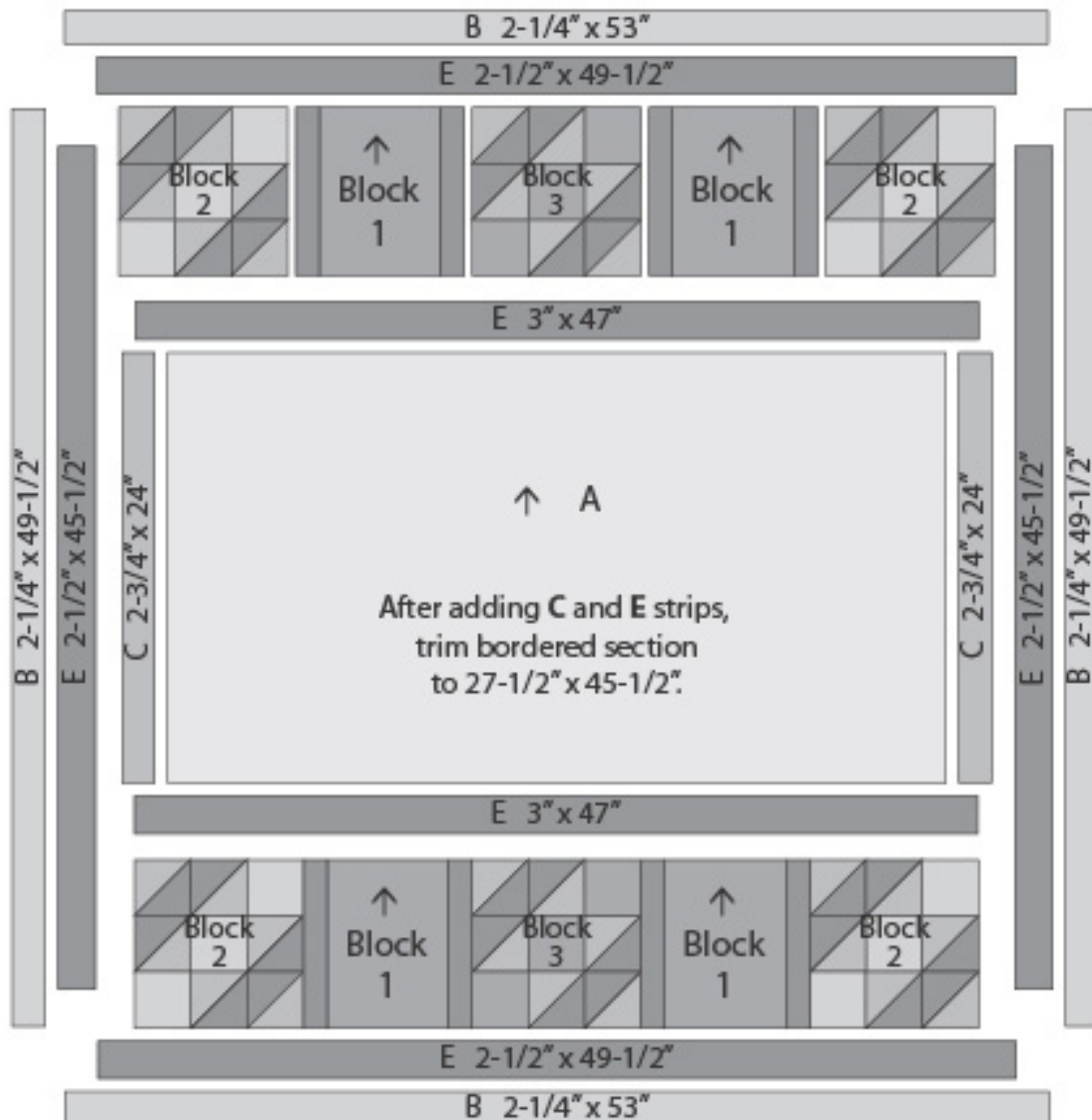
9. The quilt measures approximately 53" square (unfinished). Make backing (**Fabric F**) approximately 8" larger than the top.

10. Layer and baste top, batting, and backing together. Quilt as desired. Attach binding (**Fabric D**) and enjoy!!

QUILT LAYOUT

Border measurements are the cut size.

Arrow indicates orientation of directional print.



*Shading of Quilt Layout
may vary depending on fabrics used.*

3000

Safari, So Goodie by Hello Angel



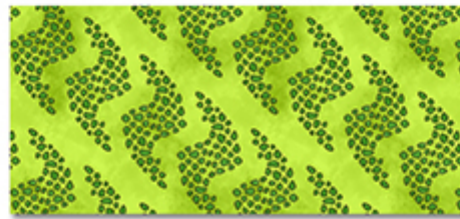
Fabric A
3000-77628-183
2/3 yd. (1 Panel)



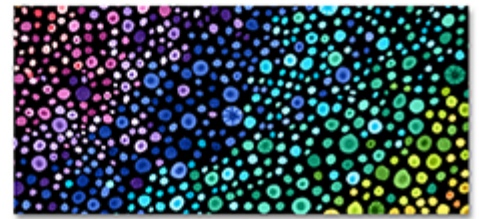
Fabric B
3000-77629-149
1 3/4 yds.



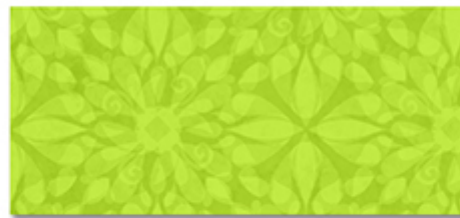
Fabric C
3000-77631-736
1/2 yd.



Fabric D
3000-77634-779
2/3 yd.
(Incl. binding)



Fabric E
3000-77635-934
1 1/4 yds.



Fabric F
3000-77636-705
3 1/2 yds.
(backing only)

