

3000

Safari, So Goodie

by Hello Angel



Throw Quilt: 52 1/2" Square



www.wilmingtonprints.com

Wilmington Prints: A World of Possibilities

Safari, So Goodie

Please read all instructions carefully AND identify all fabrics before beginning.

All instructions include a 1/4" seam allowance and strips are cut selvage to selvage, unless stated otherwise.

1. Cut the following:

Fabric A - PLEASE NOTE: Fabric does not always print the size intended. For this pattern, the center image has a coping border added then trimmed to fit the quilt correctly.

Fussy cut to approximately 23-1/2" x 42"

Fabric B - Referring to the quilt image, fussy cut strips, the length of fabric parallel to selvage: (2) 2-1/4" x 53" and (2) 2-1/4" x 49-1/2" floral burst stripe borders
Fussy cut 4 animal heads 1/4" beyond right and left edges of stripe to approximately 7" x 9-1/2"

Cut (12) 3-1/2" squares

Fabric C - Cut (2) 3-7/8" strips, subcut (18) 3-7/8" squares then cut in half diagonally for 36 triangles

Cut (2) 2-3/4" strips, subcut (2) 2-3/4" x 24" strips

Fabric D - Cut (1) 3-1/2" strip, subcut (6) 3-1/2" squares

Cut (6) 2-1/2" strips (binding)

Fabric E - Cut (2) 3-7/8" strips, subcut (18) 3-7/8" squares then cut in half diagonally for 36 triangles

Cut (3) 3" strips, sewn together end to end and cut into (2) 3" x 47" borders

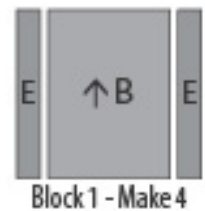
Cut (5) 2-1/2" strips, sewn together end to end and cut into (2) 2-1/2" x 49-1/2" and

(2) 2-1/2" x 45-1/2" borders

Cut (2) 2" strips, subcut (8) 2" x 9-1/2" strips

2. Piecing Order:

1. Stitch **Fabric E** 2" x 9-1/2" strips to sides of a **Fabric B** 7" x 9-1/2" piece. *Trim to 9-1/2" square (unfinished).* Make a total of 4 **Block 1**.



Arrows indicate orientation of directional prints.

2. Sew **Fabrics C** and **E** 3-7/8" triangles together along their long edges. Make a total of 36 units (3-1/2" square unfinished).



3. Arrange 6 units and 3 **Fabric B** 3-1/2" squares in 3 rows. Stitch into rows. Sew rows together. Make a total of 4 **Block 2** (9-1/2" square unfinished). In the same manner, make 2 **Block 3** with **Fabric D** squares.



4. Refer to Quilt Layout (Page 2) for arrangement and placement of **Fabric A** piece, strips, blocks, and borders.

5. Stitch **Fabric C** 2-3/4" x 24" strips to short edges of the **Fabric A** piece. Trim strip ends even. Add 3" x 47" **Fabric E** strips to long edges of **Fabric A** piece. *Trim bordered section to 27-1/2" x 45-1/2" (unfinished).*

6. Arrange blocks above and below bordered section. Stitch blocks into rows (9-1/2" x 45-1/2" unfinished). Sew rows and bordered section together into quilt center (45-1/2" square unfinished).

Shading of diagrams may vary depending on fabrics used.

Safari, So Goodie

7. Sew **Fabric E** 2-1/2" x 45-1/2" borders to right and left sides of quilt center. Add **Fabric E** 2-1/2" x 49-1/2" borders to top and bottom of quilt center.

8. Sew **Fabric B** 2-1/4" x 49-1/2" borders to right and left sides of quilt. Add **Fabric B** 2-1/4" x 53" borders to top and bottom of quilt.

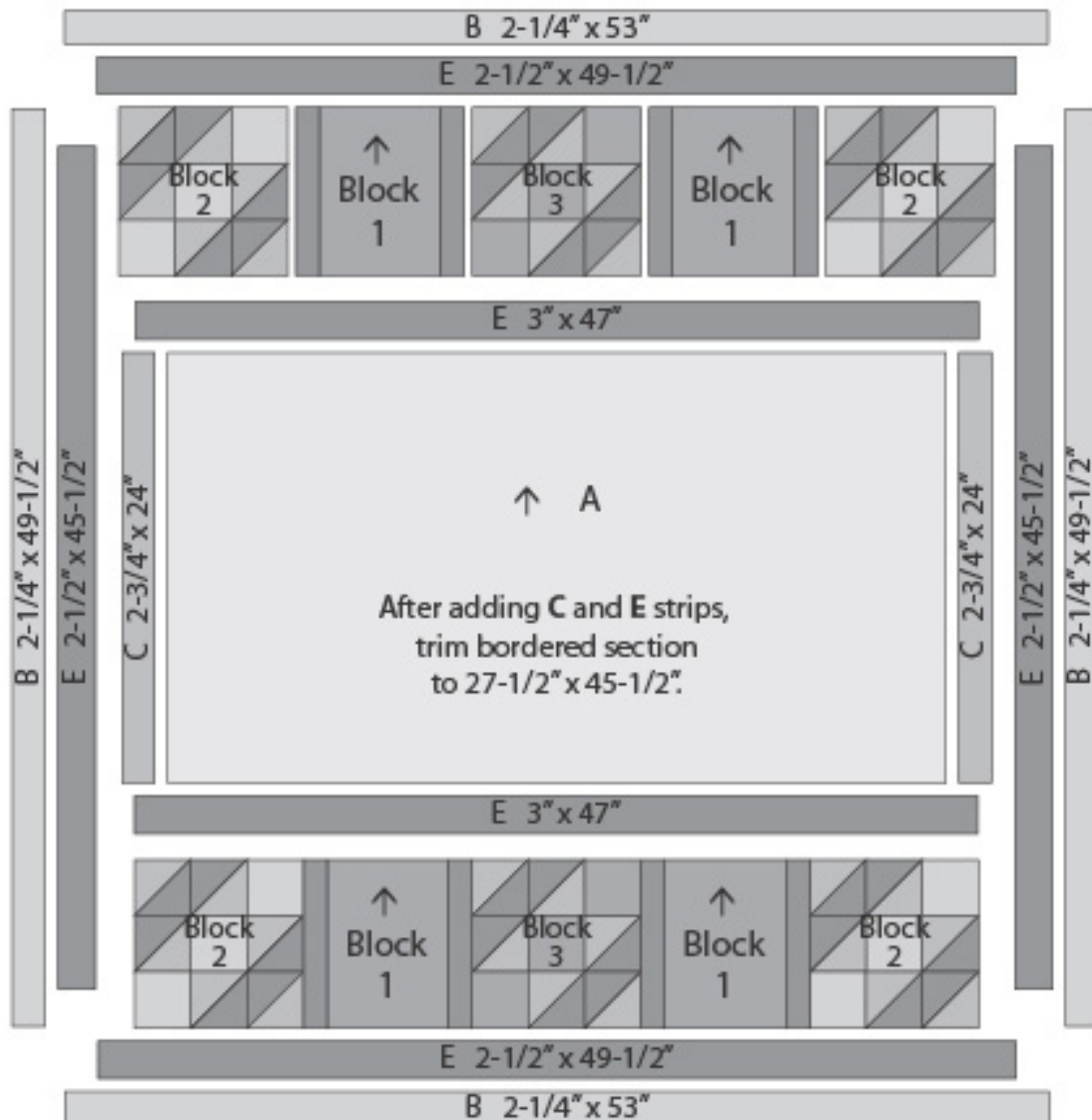
9. The quilt measures approximately 53" square (unfinished). Make backing (**Fabric F**) approximately 8" larger than the top.

10. Layer and baste top, batting, and backing together. Quilt as desired. Attach binding (**Fabric D**) and enjoy!!

QUILT LAYOUT

Border measurements are the cut size.

Arrow indicates orientation of directional print.



Shading of Quilt Layout may vary depending on fabrics used.

3000

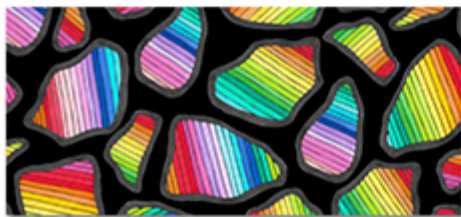
Safari, So Goodie by Hello Angel



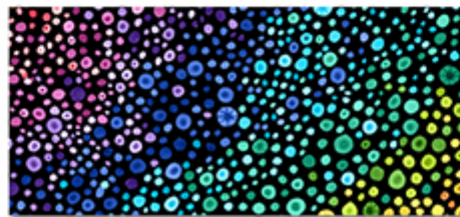
Fabric A
3000-77628-983
2/3 yd. (1 Panel)



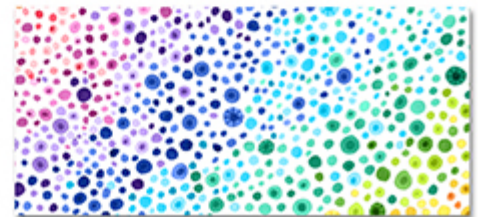
Fabric B
3000-77629-149
1 3/4 yds.



Fabric C
3000-77633-937
1/2 yd.



Fabric D
3000-77635-934
2/3 yd.
(Incl. binding)



Fabric E
3000-77635-134
1 1/4 yds.



Fabric F
3000-77632-146
3 1/2 yds.
(backing only)

