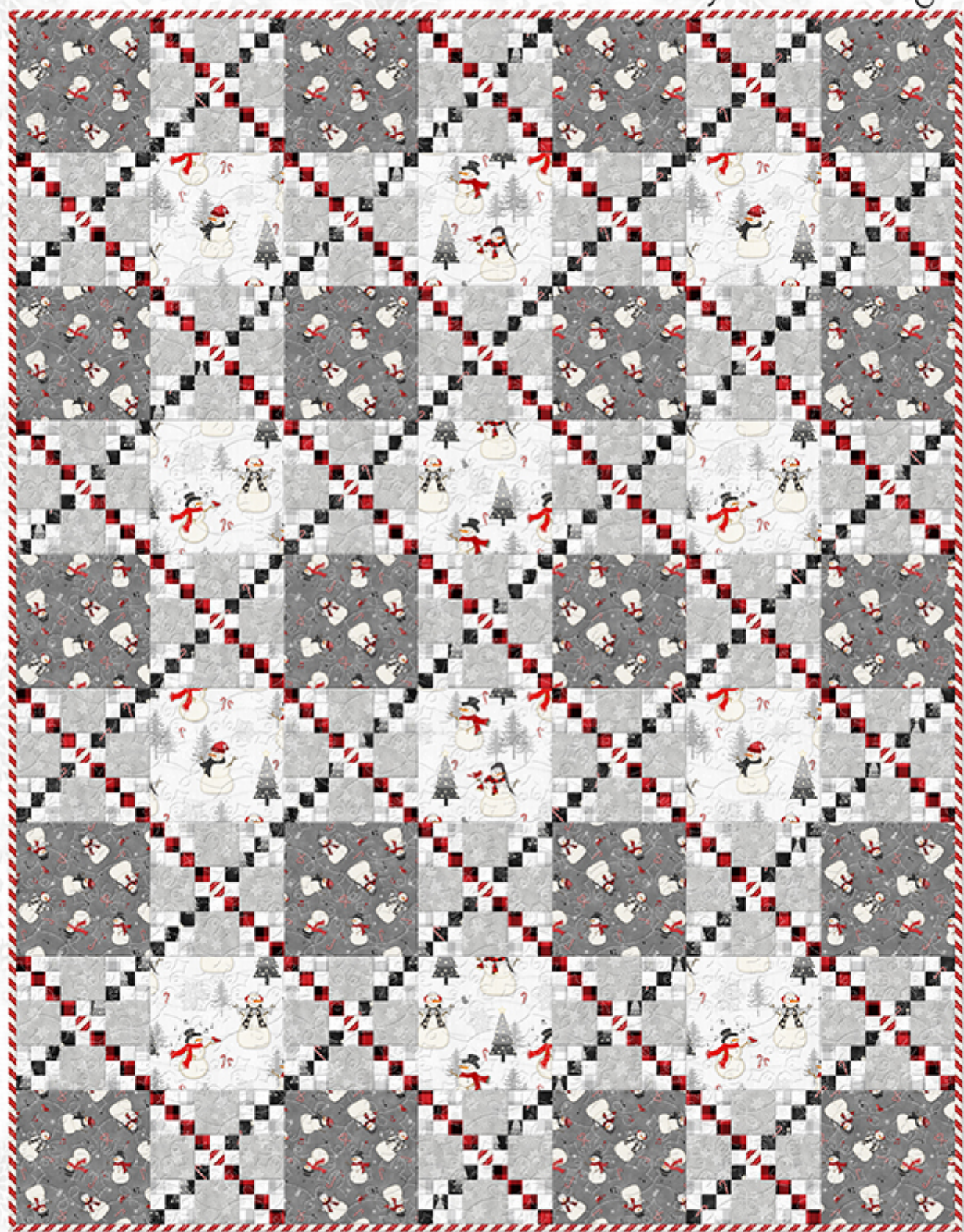


1828

# Snowy Wishes

By Jennifer Dugh



Twin Quilt: 63" x 81"



Wilmington Prints: A World of Possibilities

[www.wilmingtonprints.com](http://www.wilmingtonprints.com)

# Snowy Wishes

Please read all instructions carefully AND identify all fabrics before beginning.

All instructions include a 1/4" seam allowance and strips are cut selvage to selvage, unless stated otherwise.

## 1. Cut the following:

**Fabric A** - Cut (3) 9-1/2" strips, subcut (12) 9-1/2" squares

**Fabric B** - Cut (5) 9-1/2" strips, subcut (20) 9-1/2" squares

**Fabric C** - Cut (11) 3-1/2" strips, subcut (124) 3-1/2" squares

**Fabric D** - Cut (9) 1-1/2" strips, from 1 strip subcut (2) 1-1/2" x 21" strips

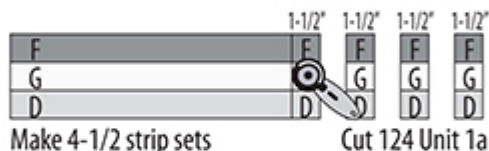
**Fabrics E and F** - From each fabric: Cut (9) 1-1/2" strips, from 1 strip subcut (1) 1-1/2" x 21" and (2) 1-1/2" x 10-1/2" strips

**Fabric G** - Cut (23) 1-1/2" strips, from 3 strips subcut (2) 1-1/2" x 21" and (7) 1-1/2" x 10-1/2" strips

**Fabric H** - Cut (8) 2-1/2" strips (binding) Cut (2) 1-1/2" strips, from 1 strip subcut (1) 1-1/2" x 10-1/2" strip

## 2. Piecing Order:

1. Stitch a **Fabric G** 1-1/2" x width of fabric (WOF) strip between **Fabrics F and D** 1-1/2" x WOF strips. Make a total of 4 WOF strip sets. In the same manner, make an **F-G-D** strip set with 1-1/2" x 21" strips. From these 4 whole and 1 half strip sets, cut (124) 1-1/2" wide Unit 1a (1-1/2" x 3-1/2" unfinished).



2. In the same manner, make 2 whole and 1 quarter (1-1/2" x 10-1/2") **G-F-G** strip sets, cut (62) 1-1/2" wide Unit 1b.



3. In the same manner, make 4 whole and 1 half **E-G-D** strip sets, cut (124) 1-1/2" wide Unit 1c.



4. In the same manner, make 2 whole and 1 quarter (1-1/2" x 10-1/2") **G-E-G** strip sets, cut (62) 1-1/2" wide Unit 1d.



5. In the same manner, make 2 whole and 1 quarter (1-1/2" x 10-1/2") **F-G-E** strip sets, cut (62) 1-1/2" wide Unit 1e.



6. In the same manner, make 1 whole and 1 quarter (1-1/2" x 10-1/2") **G-H-G** strip sets, cut (31) 1-1/2" wide Unit 1f.



7. Sew a Unit 1b between 2 Unit 1a as shown. Make total of 62 Unit 2a (3-1/2" square unfinished). In the same manner, make 62 Unit 2b and 31 Unit 2c with units indicated.



8. Arrange 2 each Unit 2a and 2b, 1 Unit 2c, and 4 **Fabric C** 3-1/2" squares in 3 rows as shown. Stitch into rows. Sew rows together. Make a total of 31 blocks (9-1/2" square unfinished).



9. Refer to Quilt Layout (Page 2) for arrangement and placement of blocks and 9-1/2" squares.

10. Arrange blocks and **Fabrics A and B** 9-1/2" squares in 9 rows. Stitch into rows. Sew rows together.

11. The quilt measures approximately 63-1/2" x 81-1/2" (unfinished). Make backing (**Fabric I**) approximately 8" larger than the top.

12. Layer and baste top, batting, and backing together. Quilt as desired. Attach binding (**Fabric H**) and enjoy!!

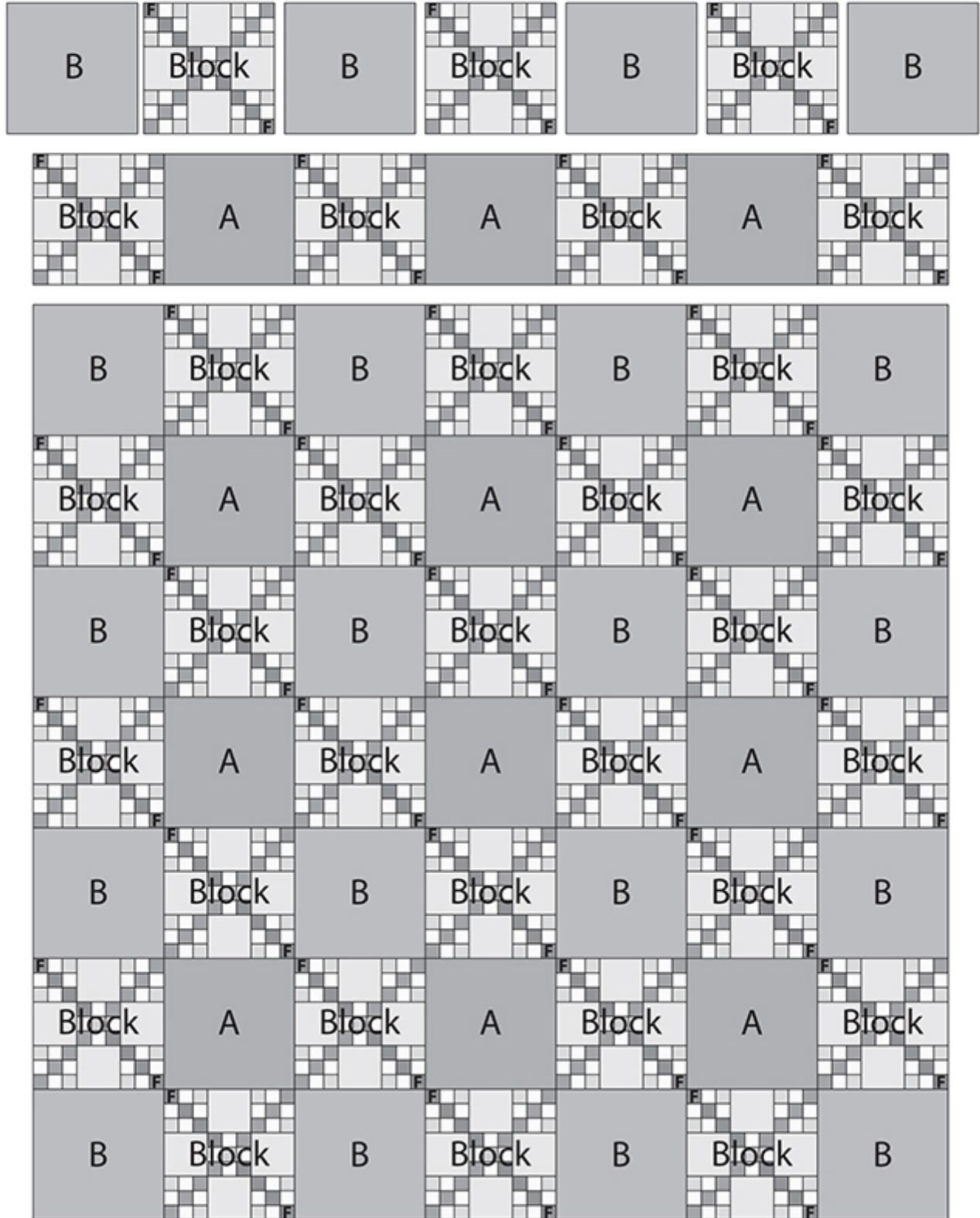
Shading of diagrams may vary depending on fabrics used.

# Snowy Wishes

## QUILT LAYOUT

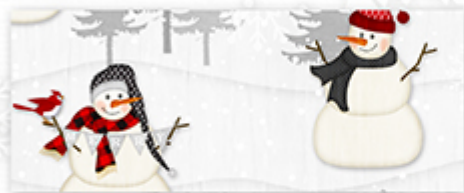
Arrows indicate orientation of directional prints.

Shading of Quilt Layout may vary depending on fabrics used.



# Snowy Wishes

By Jennifer Dugh



A 1828-82569-930  
1 yd.



B 1828-82570-913  
1 5/8 yds.



C 1828-82574-919  
1 1/3 yds.



D 1828-82573-919  
5/8 yd.



E 1828-82571-991  
5/8 yd.



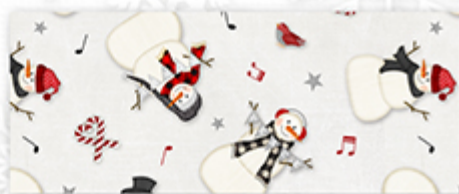
F 1828-82573-393  
5/8 yd.



G 1828-82574-191  
1 1/4 yds.



H 1828-82572-321  
7/8 yd. (Incl. binding)



I 1828-82570-903  
5 1/8 yds.  
(Backing only)

OR



108" Option  
I 1054-2079-900  
2 1/8 yds.  
(Backing only)

