

Dragonfly Garden

by Color Principle

Quilt 2



Designed by Denise Russell

Quilt size: 72" x 84"

Skill Level: Intermediate

 **Henry Glass & Co., Inc.**

49 West 37th Street
New York, NY 10018
Tel: 212-686-5194 - Fax: 212-532-3525
Toll Free: 800-294-9495 - www.henryglassfabrics.com

facebook

Free Project
NOT FOR RESALE



Dragonfly Garden

Fabrics in the Collection



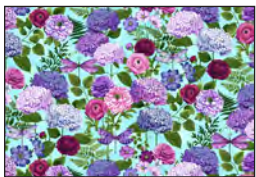
2459P-11 Garden Banner
Panel - Sky Blue



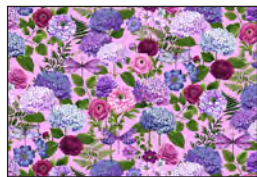
2460-77 Dragonfly Blocks - Royal



2461-11 Border Stripe - Sky Blue



2462-11 Hydrangea
Bouquets - Sky Blue



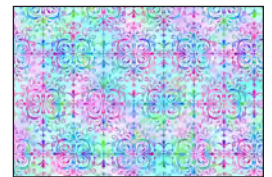
2462-22 Hydrangea
Bouquets - Peony Pink



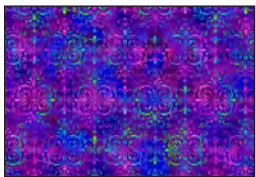
2463-17 Dragonfly Toss
Pastel



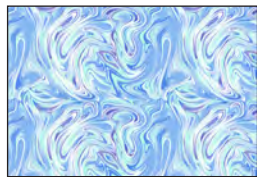
2464-77 Ranunculus
Floral - Royal



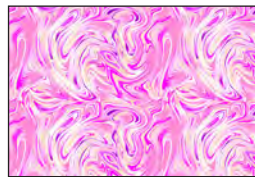
2465-17 Garden
Medallion - Pastel



2465-77 Garden
Medallion - Royal



2466-11 Lagoon Marble
Sky Blue



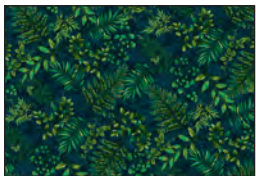
2466-22 Lagoon Marble
Peony Pink



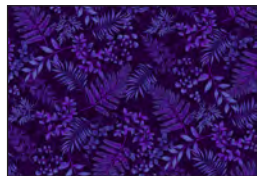
2467-11 Dragonfly
Lagoon - Sky Blue



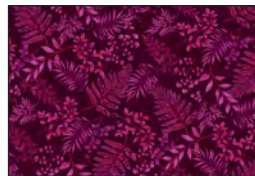
2468-17 Fern
Pastel



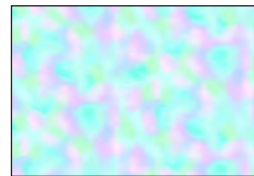
2468-66 Fern
Forest



2468-77 Fern
Royal



2468-88 Fern
Burgundy



2469-17 Candy Cloud
Pastel

Selected fabrics from the Folio Basic Collection



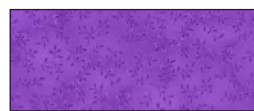
7755-01 White on white



7755-25 Lt. Pink



7755-52 Peony Pink



7755-56 Grape



7755-58 Grape



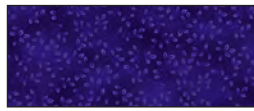
7755-61 Jade



7755-71 Cerulean Blue



7755-75 Med. Blue



7755-77 Royal

Dragonfly Garden - Quilt 2

Page 1

Materials

Yardages and cutting instructions are based on 42" of usable fabric width.

1/8 yard 7755-25 Folio Basic-Lt. Pink
1/4 yard 2463-17 Dragonfly Toss-Pastel
1/3 yard 2466-22 Lagoon Marble-Peony Pink
1/3 yard 2468-17 Fern-Pastel
1/3 yard 2466-11 Lagoon Marble-Sky Blue
1/3 yard 7755-77 Folio Basic-Royal
1/2 yard 7755-52 Folio Basic-Peony Pink
1/2 yard 7755-61 Folio Basic-Jade
1/2 yard 7755-58 Folio Basic-Grape
1/2 yard 7755-75 Folio Basic-Med. Blue
1/2 yard 7755-56 Folio Basic-Lt. Violet
1/2 yard 7755-71 Folio Basic-Cerulean Blue
1/2 yard 2468-77 Fern-Royal
1/2 yard 2468-66 Fern-Forest
1 yard 2465-17 Garden Medallion-Pastel
1-1/8 yards 2468-88 Fern-Burgundy* (includes binding)
1-1/4 yards 2465-77 Garden Medallion-Royal
1-1/2 yards 2460-77 Dragonfly Blocks-Royal
2-1/4 yards 7755-01 Folio Basic White-on-white
7 yards 2467-11 Dragonfly Lagoon for backing
80" x 94" piece of batting
Tracing paper

Cut Fabrics

*Note: All strips are cut across the width of the fabric (WOF) from selvage to selvage unless otherwise noted. If cut across the length of the fabric (LOF), the **LOF** notation will be indicated.*

From 7755-25 Folio Basic-Lt. Pink:

*Cut one 2-1/2" x WOF strip. Sub-cut five 2-1/2" x 4-1/2" rectangles. (A)

From 2463-17 Dragonfly Toss-Pastel:

*Cut one 4-1/2" x WOF strip. Sub-cut thirteen 2-1/2" x 4-1/2" rectangles.

From each:

2466-22 Lagoon Marble-Peony Pink

2468-17 Fern-Pastel

*Cut one 6-3/4" x WOF strip. Sub-cut four 6-3/4" squares.

From each:

2466-11 Lagoon Marble-Sky Blue

7755-77 Folio Basic-Royal

*Cut one 6-3/4" x WOF strip. Sub-cut three 6-3/4" squares.

From 7755-52 Folio Basic-Peony Pink:

*Cut two 2" x WOF strips. Sub-cut:

- Six 2" x 4-1/2" strips (B); and
- Six 2" x 5-1/2" strips (C)

*Cut one 6-3/4" x WOF strip. Sub-cut four 6-3/4" squares.

From 7755-61 Folio Basic-Jade:

*Cut three 2" x WOF strips. Sub-cut:

- Four 2" x 4-1/2" strips; (B)
- Four 2" x 5-1/2" strips; (C)
- Four 2" x 7-1/2" strips (D); and
- Four 2" x 8-1/2" strips. (E)

*Cut one 6-3/4" x WOF strip. Sub-cut three 6-3/4" squares.

From 7755-58 Folio Basic-Grape:

*Cut three 2" x WOF strips. Sub-cut:

- Two 2" x 4-1/2" strips; (B)
- Two 2" x 5-1/2" strips; (C)
- Four 2" x 7-1/2" strips (D); and
- Four 2" x 8-1/2" strips. (E)

*Cut one 6-3/4" x WOF strip. Sub-cut four 6-3/4" squares.

From each:

7755-75 Folio Basic-Med. Blue

7755-71 Folio Basic-Cerulean Blue:

*Cut two 2" x WOF strips. Sub-cut:

- Four 2" x 7-1/2" strips (D); and
- Four 2" x 8-1/2" strips. (E)

*Cut one 6-3/4" x WOF strip. Sub-cut three 6-3/4" squares.

From 7755-56 Folio Basic-Lt. Violet:

*Cut two 2" x WOF strips. Sub-cut:

- Four 2" x 4-1/2" strips; (B)
- Four 2" x 5-1/2" strips; (C)
- Two 2" x 7-1/2" strips (D); and

Dragonfly Garden - Quilt 2

Page 2

- Two 2" x 8-1/2" strips. (E)

*Cut one 6-3/4" x WOF strip. Sub-cut three 6-3/4" squares.

From each:

2468-77 Fern-Royal

2468-66 Fern-Forest

*Cut three 2" x WOF strips. Sub-cut:

- Six 2" x 4-1/2" strips; (B)

- Six 2" x 5-1/2" strips; (C)

- Four 2" x 7-1/2" strips (D); and

- Four 2" x 8-1/2" strips. (E)

*Cut one 6-3/4" x WOF strip. Sub-cut three 6-3/4" squares.

From 2465-17 Garden Medallion-Pastel:

*Cut three 10-1/2" x WOF strips. Sub-cut seventy-two 1-1/2" x 10-1/2" strips. (F)

From 2468-88 Fern-Burgundy:

*Cut four 2" x WOF strips. Sub-cut:

- Six 2" x 4-1/2" strips; (B)

- Six 2" x 5-1/2" strips; (C)

- Six 2" x 7-1/2" strips (D); and

- Six 2" x 8-1/2" strips. (E)

*Cut one 6-3/4" x WOF strip. Sub-cut four 6-3/4" squares.

*Cut eight 2-1/2" x WOF strips for binding.

From 2465-77 Garden Medallion-Royal:

*Cut one 5" x WOF strip. Sub-cut four 5" x 8" rectangles.

*Cut three 10-1/2" x WOF strips. Sub-cut seventy-two 1-1/2" x 10-1/2" strips. (F)

From 2460-77 Dragonfly Blocks-Royal:

*Fussy-cut eighteen 8-1/2" x 10-1/2" rectangles.

From 7755-01 Folio Basic-White-on-white:

*Cut three 3-1/2" x WOF strips. Sub-cut:

- Eight 3-1/2" x 6 rectangles; and

- Eight 3-1/2" x 8" rectangles (border corner blocks).

*Cut eight 8" x WOF strips. Sub-cut eighty-eight 3-1/2" x 8" rectangles.

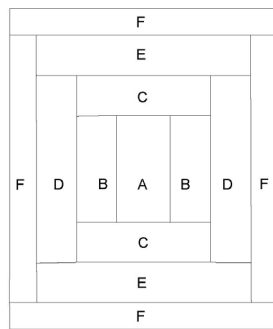
Assemble Blocks

Note: Measurements include 1/4" seam allowances. Sew with right sides together unless otherwise stated. If no direction is specified, press seams toward darker fabric.

1. Group the fabric pieces per block as listed on Table 1 to facilitate assembly. Refer to the block diagram (*figure 1*) for patch size and location.

Fabric placement per block			
 <p>Block 1 (A) 2463-17 (B/C) 7755-52 (D/E) 2468-88 (F) 2465-17</p>	 <p>Blocks 2/7 – Make 2. (A) 2463-17 (B/C) 7755-61 (D/E) 2468-77 (F) 2465-17</p>	 <p>Block 3 (A) 7755-25 (B/C) 7755-58 (D/E) 2468-66 (F) 2465-17</p>	 <p>Block 4 (A) 7755-25 (B/C) 2468-66 (D/E) 7755-75 (F) 2465-17</p>
 <p>Block 5 (A) 2463-17 (B/C) 2468-88 (D/E) 7755-56 (F) 2465-17</p>	 <p>Block 6 (A) 2463-17 (B/C) 2468-77 (D/E) 7755-61 (F) 2465-17</p>	 <p>Block 8/13 – Make 2. (A) 2463-17 (B/C) 7755-56 (D/E) 2468-66 (F) 2465-17</p>	 <p>Block 9 (A) 7755-25 (B/C) 7755-52 (D/E) 2468-88 (F) 2465-17</p>
 <p>Block 10 (A) 7755-25 (B/C) 2468-88 (D/E) 7755-75 (F) 2465-17</p>	 <p>Block 11 (A) 2463-17 (B/C) 2468-77 (D/E) 7755-71 (F) 2465-17</p>	 <p>Block 12 (A) 2463-17 (B/C) 2468-66 (D/E) 7755-58 (F) 2465-17</p>	 <p>Block 14 (A) 2463-17 (B/C) 7755-61 (D/E) 2468-88 (F) 2465-17</p>
 <p>Block 15 (A) 7755-25 (B/C) 7755-52 (D/E) 2468-77 (F) 2465-17</p>	 <p>Block 16 (A) 2463-17 (B/C) 2468-77 (D/E) 7755-58 (F) 2465-17</p>	 <p>Block 17 (A) 2463-17 (B/C) 2468-66 (D/E) 7755-71 (F) 2465-17</p>	 <p>Block 18 (A) 2463-17 (B/C) 2468-88 (D/E) 7755-61 (F) 2465-17</p>

Table 1. Block colorway and fabric placement.



Block Diagram

- (A): 2-1/2" x 4-1/2"
- (B): 2" x 4-1/2"
- (C): 2" x 5-1/2"
- (D): 2" x 7-1/2"
- (E): 2" x 8-1/2"
- (F): 2" x 10-1/2"

Figure 1

Use the instructions in steps 2-4 for all the blocks on Table 1:

2. Sew two 2" x 4-1/2" B strips to opposite sides of a 2-1/2" x 4-1/2" A strip. Sew one 2" x 5-1/2" C strip to the top and one to the bottom (*figure 2*). Press the seams away from center.

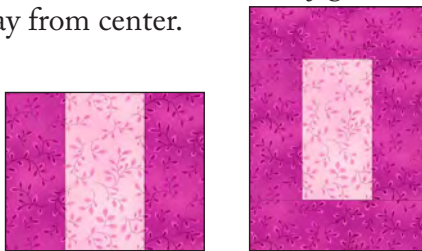


Figure 2

3. Sew two 2" x 7-1/2" D strips to opposite sides of the step 2 unit. Sew one 2" x 8-1/2" E strip to the top and one to the bottom (*figure 3*). Press the seams away from center.



Figure 3

4. Repeat step 3 with the 1-1/2" x 10-1/2" F strips to complete the 10-1/2" x 12-1/2" block (*figure 4*).

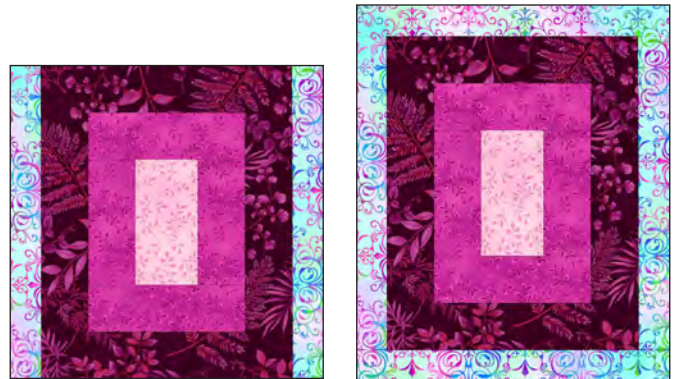


Figure 4

5. Sew two 1-1/2" x 10-1/2" 2465-77 Garden Medallion-Royal strips to opposite sides of an 8-1/2" x 10-1/2" 2460-77 Dragonfly Blocks-Royal rectangle. Sew one 1-1/2" x 10-1/2" 2465-77 Garden Medallion-Royal strip to the top and one to the bottom. Press the seams to the center. Repeat with the remaining rectangles to make eighteen 10-1/2" x 12-1/2" blocks (*figure 5*).



Figure 5 – Make 18.

6. Print forty-four templates A and four templates B.

7. Using the templates A and all of the 6-3/4" squares mentioned in the cutting instructions, as well as the 3-1/2" x 8" 7755-01 Folio Basic White-on-white rectangles (leave eight for the corner blocks), paper piece each section noting that fabrics are placed on the back side of the templates and seams are stitched on the printed side of the templates (*figure 6*, next page). Do not remove paper. Make a total of forty-four 6-1/2" border blocks of assorted colors.

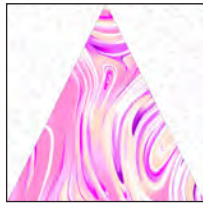


Figure 6 – Make 44 of assorted colors.

8. Repeat step 7 with the templates B, the eight remaining 3-1/2" x 8" 7755-01 Folio Basic White-on-white rectangles, the 3-1/2" x 6" White-on-white rectangles, and the 5" x 8" 2465-77 Garden Medallion-Royal squares to make four 6-1/2" corner blocks (figure 7).



Figure 7 – Make 4.

Assemble Quilt Top

9. Following the quilt photo for block placement, lay out six rows of six blocks each. Sew the blocks together in each row, then matching adjacent seams sew the rows together in order. The quilt measures 60-1/2" x 72-1/2" up to here.

10. For the border and referring to the quilt photo for color placement and block orientation, arrange twelve blocks for each side of the quilt. Sew blocks together and sew one border strip to each side of the quilt center. Remove paper. Press the seams toward quilt center.

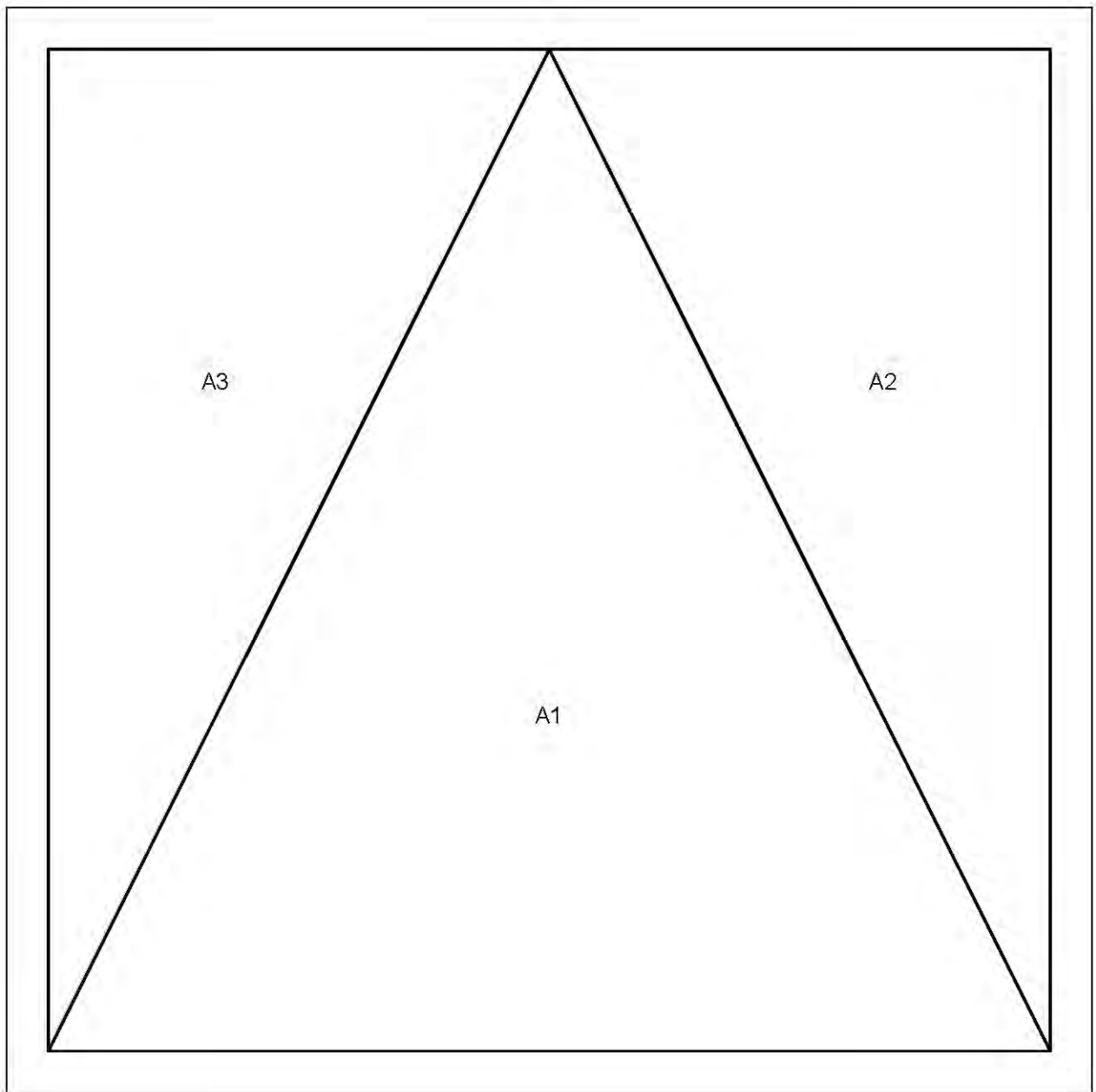
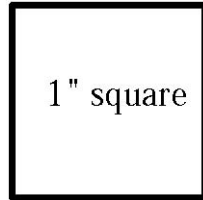
11. Repeat step 10 with the four corner blocks and the remainder blocks (ten blocks per strip) and sew one border strip to the top and one to the bottom of the quilt center.

Finishing

12. Create a quilt sandwich with the batting between the quilt top and the backing. Pin or baste layers together, mark quilting design, and quilt by hand or machine. When quilting is complete, remove pins or basting, and trim batting and backing even with raw edges of the quilt top.

13. Join the eight 2-1/2" 2468-88 Fern-Burgundy binding strips together end to end using a diagonal seam to make one long strip. Trim seams to 1/4" and press them open. Fold strip in half lengthwise and press. Sew binding to the edges of the quilt top, mitering corners, and overlapping ends. Fold binding to the back of the quilt and stitch it in place by hand to finish.

Foundation Templates



Foundation Templates

