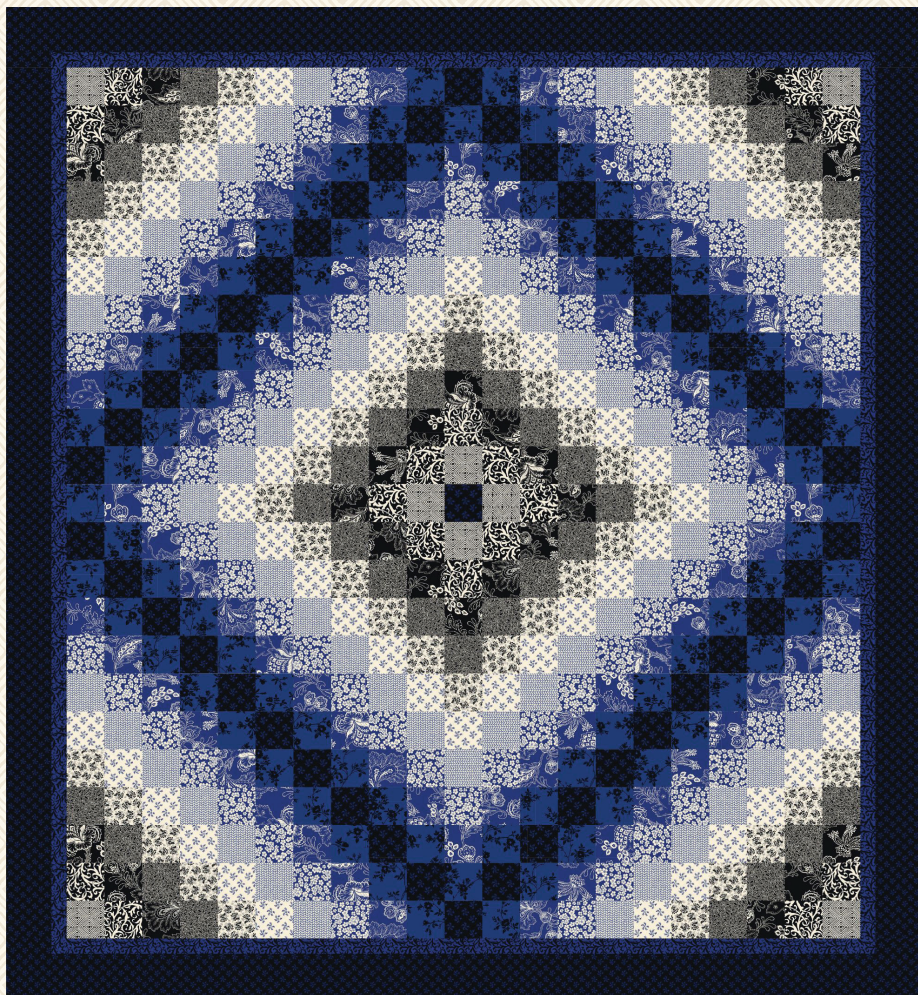


MAYWOOD  STUDIO

nightfall quilt



Nightfall Quilt by Maywood Studio

Featuring the Nightfall collection from Maywood Studio.
Kit includes pattern and fabric for quilt top and binding.

61" x 66"

maywoodstudio.com

nightfall



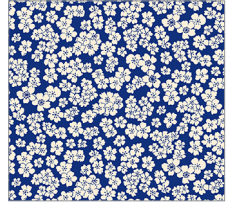
Fabric 1
10248-JN



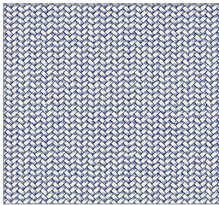
Fabric 2
10241-NJ



Fabric 3
10240-NE



Fabric 4
10245-NE



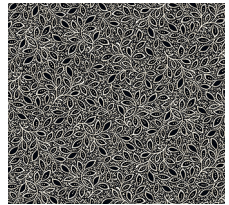
Fabric 5
10249-EN



Fabric 6
10248-EN



Fabric 7
10244-EJ



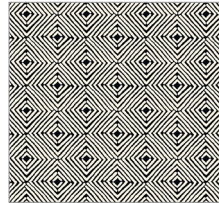
Fabric 8
10247-JE



Fabric 9
10240-JE



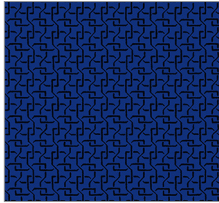
Fabric 10
10242-JE



Fabric 11
10243-JE



Fabric 12
10242-NJ



Binding
10246-NJ

MAYWOOD  STUDIO

Maywood Studio makes every effort to make sure our patterns are accurate.
Check for updates at maywoodstudio.com/projects

Fabric Requirements

Fabric 1	10248-JN	1 yard
Fabric 2	10241-NJ	5/8
Fabric 3	10240-NE	5/8
Fabric 4	10245-NE	1/2
Fabric 5	10249-EN	1/2
Fabric 6	10248-EN	3/8
Fabric 7	10244-EJ	3/8
Fabric 8	10247-JE	3/8
Fabric 9	10240-JE	1/4
Fabric 10	10242-JE	1/4
Fabric 11	10243-JE	1/8
Fabric 12	10242-NJ	3/8
Binding	10246-NJ	1/2
Backing	108" wide	2 yards
	44/45" wide	4 yards

1	2	3	4	5
2	1	2	3	4
3	2	1	2	3
4	3	2	1	2
5	4	3	2	1

Block A - Make 8

6	5	4	3	2
7	6	5	4	3
8	7	6	5	4
9	8	7	6	5
10	9	8	7	6

Block B - Make 8

Cutting

- Fabric 1 Cut (4) strips 3" x WOF
Subcut (43) 3" squares
- Outer Border
Cut (6) strips 3-1/2" x WOF
(2) side borders: 3-1/2" x 60"
(2) top/bottom borders: 3-1/2" x 61"
- Fabric 2 Cut (6) strips 3" x WOF
Subcut (80) 3" squares
- Fabric 3 Cut (6) strips 3" x WOF
Subcut (72) 3" squares
- Fabric 4 Cut (5) strips 3" x WOF
Subcut (64) 3" squares
- Fabric 5 Cut (5) strips 3" x WOF
Subcut (56) 3" squares
- Fabric 6 Cut (4) strips 3" x WOF
Subcut (48) 3" squares
- Fabric 7 Cut (3) strips 3" x WOF
Subcut (40) 3" squares
- Fabric 8 Cut (3) strips 3" x WOF
Subcut (32) 3" squares
- Fabric 9 Cut (2) strips 3" x WOF
Subcut (24) 3" squares
- Fabric 10 Cut (2) strip 3" x WOF
Subcut (16) 3" squares
- Fabric 11 Cut (1) strip 3" x WOF
Subcut (8) 3" squares
- Fabric 12 Inner Border
Cut (6) strips 1-1/2" x WOF
(2) side borders: 1-1/2" x 58"
(2) top/bottom borders: 1-1/2" x 55"
- Binding Cut (7) strips 2-1/4" x WOF

WOF - Width of Fabric
LOF - Length of Fabric
RST - Right Sides Together
HST - Half Square Triangle

Nightfall Quilt Instructions

Please read all instructions before you begin. Seam allowance is 1/4. Fabric is abbreviated as 'F' - for example, F1 refers to Fabric 1. Press in the direction of arrows.

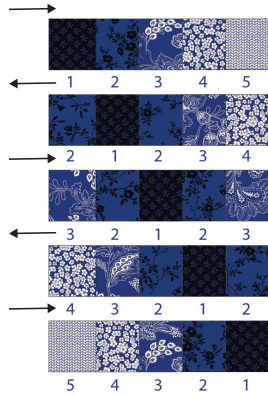
Use the check boxes to mark each step as you complete it.

Block A

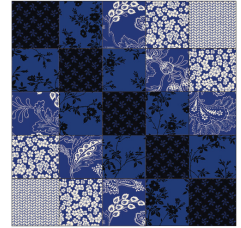
Gather (40) F1, (64) F2, (48) F3, (32) F4, (16) F5 squares

1. Sew the squares into rows as shown to the right. Press in the direction of the arrows.

2. Sew row to row. Press. Make 8.



Block A



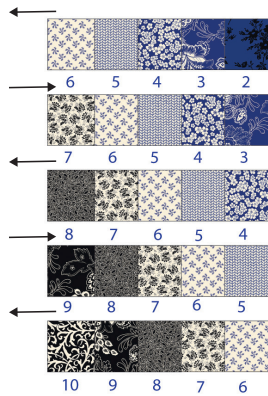
Make 8
13" x 13"

Block B

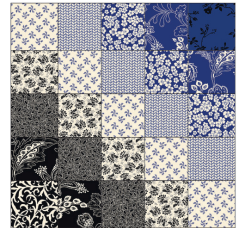
Gather (8) F2, (16) F3, (24) F4, (32) F5, (40) F6, (32) F7, (24) F-8, (16) F-9, (8) F10 squares

1. Sew the squares into rows as shown to the right. Press in the directions of the arrows.

2. Sew row to row. Press. Make



Block B

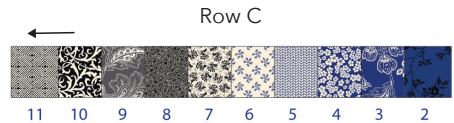


Make 8
13" x 13"

Row C

Gather (8) each of the F2, F3, F4, F5, F6, F7, F8, F9, F10, F11 squares and (3) F1 squares.

1. Sew the squares into rows as shown to the right. Press in one direction. Make 8 of each row.

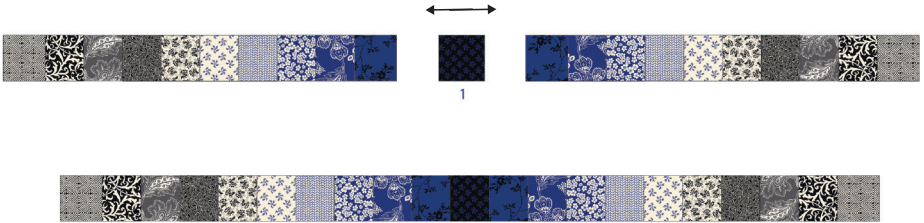


Row C

Reserve (2) Row C units for the final top assembly on p. 7

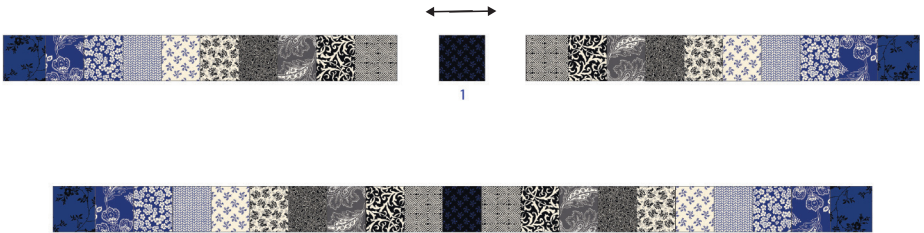
Row C *Con't*

- 2. Top and Bottom Sashing:
Lay the Row C units out
as illustrated to the right with
(1) F1 square in the middle. Sew
together. Press. Make 2.



Make 2
Top and Bottom Sashing

- 3. Middle Sashing:
Lay the Row C units out
as illustrated to the right with
(1) F1 square in the middle. Sew
together. Press. Make 1.



Make 1
Middle Sashing

Assemble the Quilt Top

- ❑ 1. Lay the A and B blocks out as illustrated to the right, rotating as needed.
- ❑ 2. Sew the B-A and A-B blocks together into rows. Press open.
- ❑ 3. Sew row to row. Press open. Make 4.

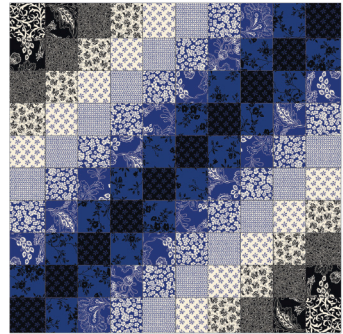
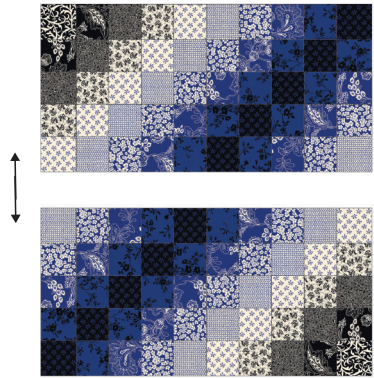
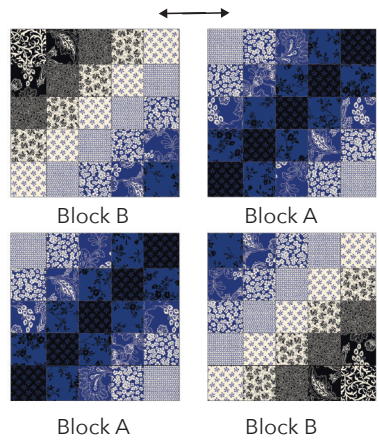
Refer to the diagram on p.7 for the following steps.

- ❑ 4. Sew a C row in between two Step 3 block sections as illustrated on. p.7. Make 2. Press toward Row C. Make 2.
- ❑ 5. Sew the middle sashing to the join the top and bottom rows. Press toward the sashing.
- ❑ 6. Sew the top and bottom sashing to the quilt top. Press toward sashing.

Add the Borders

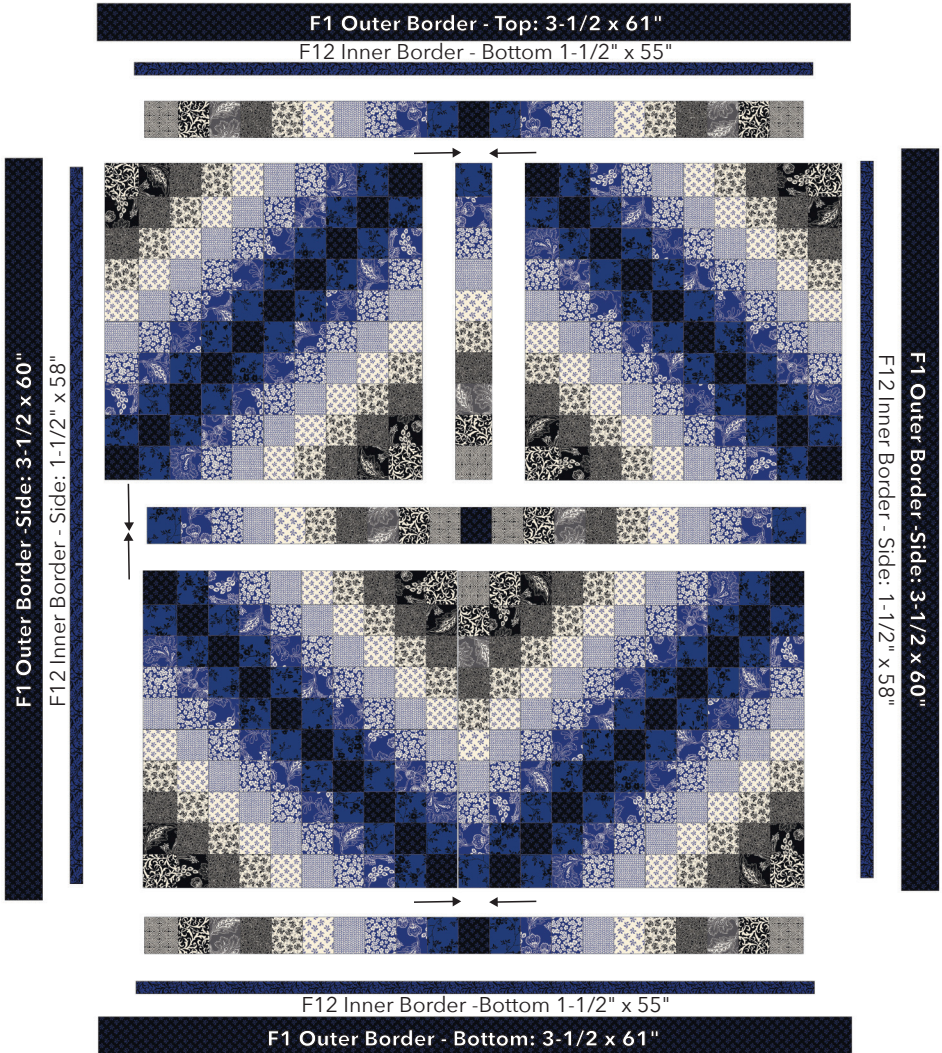
Sew the strips end to end and subcut into the sizes listed in the cutting directions on p.3.

- ❑ 7. Sew the F12 inner border strips to the sides of the quilt top. Press toward borders.
- ❑ 8. Sew the F12 inner border strips to the top and bottom of the quilt top. Press toward borders.
- ❑ 9. Sew the F1 outer side borders to the quilt top. Press toward borders.
- ❑ 10. Sew the F1 outer top and bottom borders to the quilt top. Press toward borders.



Make 4
25-1/2" x 25-1/2"

Tip: Pin the borders to the quilt top starting at the center and pinning out to the edge for each round. This will help to make sure you don't stretch the borders as you sew.



Finishing

- ❑ 1. Layer the backing (wrong side up), batting and quilt top (right side up). Baste layers to secure. Quilt as desired. Trim the excess backing and batting.
- ❑ 2. Sew the binding strips together into one continuous strip. Press in half length-wise. Sew the binding to the quilt top with a 1/4" seam allowance. Turn the binding to the back side of the quilt and stitch down by hand with matching thread.

Quilt Planning Diagram

Use this diagram to plan your quilt top.

