

MAYWOOD  STUDIO

Christmas Night TREE SKIRT



Christmas Night Tree Skirt by Monique Jacobs

Featuring the Christmas Night collection by Monique Jacobs from Maywood Studio.

40" x 40"

maywoodstudio.com

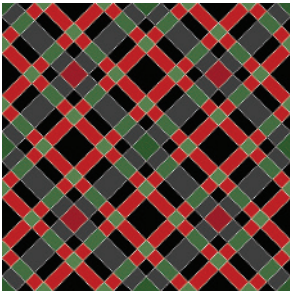
Christmas Night

BY MONIQUE JACOBS

Fabric Requirements and Cutting



Christmas Night
2-1/2" strips
1 roll - minimum 24 strips



Fabric 1- 10356-Z
1 yard

Additional Supplies

2 yards fusible fleece
2 yards backing

Select (24) 2-1/2" Strips

From 12 strips cut:

- (1) 2-1/2" x 15" rectangle
- (1) 2-1/2" x 12" rectangle
- (1) 2-1/2" x 9-1/2" rectangle
- (1) 2-1/2" x 4-1/2" rectangle

From 12 strips cut:

- (1) 2-1/2" x 13-1/2" rectangle
- (1) 2-1/2" x 10-1/2" rectangle
- (1) 2-1/2" x 7-1/2" rectangle
- (1) 2-1/2" x 5-1/2" rectangle
- (1) 2-1/2" square

Fabric 1 Plaid

(5) 1-1/2" x 25" strips

Cut (8) 2-1/2" x WOF strips for binding

Backing and Fusible Fleece

Cut (6) 21" squares

WOF - Width of Fabric

LOF - Length of Fabric

RST - Right Sides Together

HST - Half Square Triangle

A note about this pattern:

This is a quilt-as-you-go project, meaning you sew the pieces directly to the fusible fleece. It is intended to look fun and scrappy! You will select 24 strips from the roll. Have fun playing with the combinations of patterns to create this fun tree skirt! Walking foot or dual feed recommended.

MAYWOOD  STUDIO

Maywood Studio makes every effort to make sure our patterns are accurate.
Check for updates at maywoodstudio.com/projects

Christmas Night Tree Skirt Instructions

by Monique Jacobs
www.opengatequilts.com

Please read all instructions before you begin. Seam allowance is 1/4" unless otherwise noted.
Press in the direction of arrows.

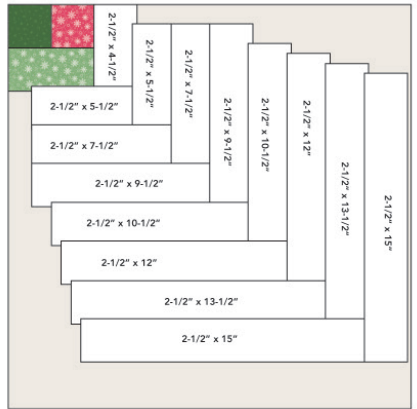
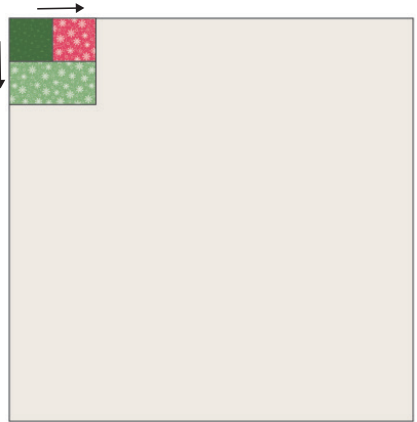
Piece the wedge sections.

1. Lay out a 21" backing fabric square, wrong side up and a 21" fusible fleece square on top with the fusible side down. Fuse into place. Make 6.
2. Starting at one corner, lay two different 2-1/2" squares, right sides together, on the fusible fleece. Sew 1/4" seam through all the layers. Press out.
3. Sew a 2-1/2" x 4-1/2" rectangle to the step 2 section.
4. Continue adding pieces, lining up the bottom edge to the piece you just added.

Add in the following order:

- 2-1/2" x 4-1/2" rectangle
- (2) 2-1/2" x 5-1/2" rectangles
- (2) 2-1/2" x 7-1/2" rectangles
- (2) 2-1/2" x 9-1/2" rectangles
- (2) 2-1/2" x 10-1/2" rectangles
- (2) 2-1/2" x 12" rectangles
- (2) 2-1/2" x 13-1/2" rectangles
- (2) 2-1/2" x 15" rectangles

Press out as you go. Repeat to make 6.

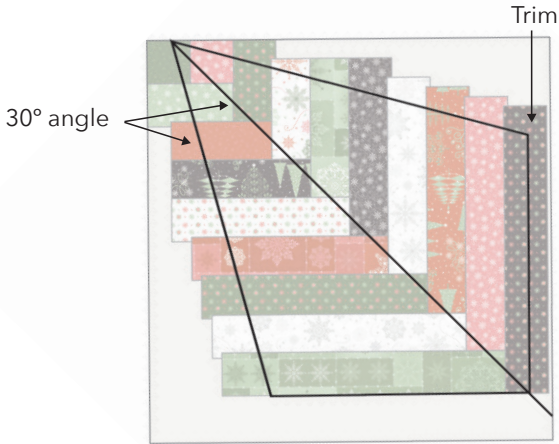


Trim the wedge sections.

5. Find and mark the center of the wedge using a marking tool, like a hera marker or wash-away marker of your choice. Use a quilter's ruler to measure and mark 30° angles from both sides of the center. Trim.

6. Trim the excess off the last strip on the right side so that it measures $1\text{-}1/4"$.

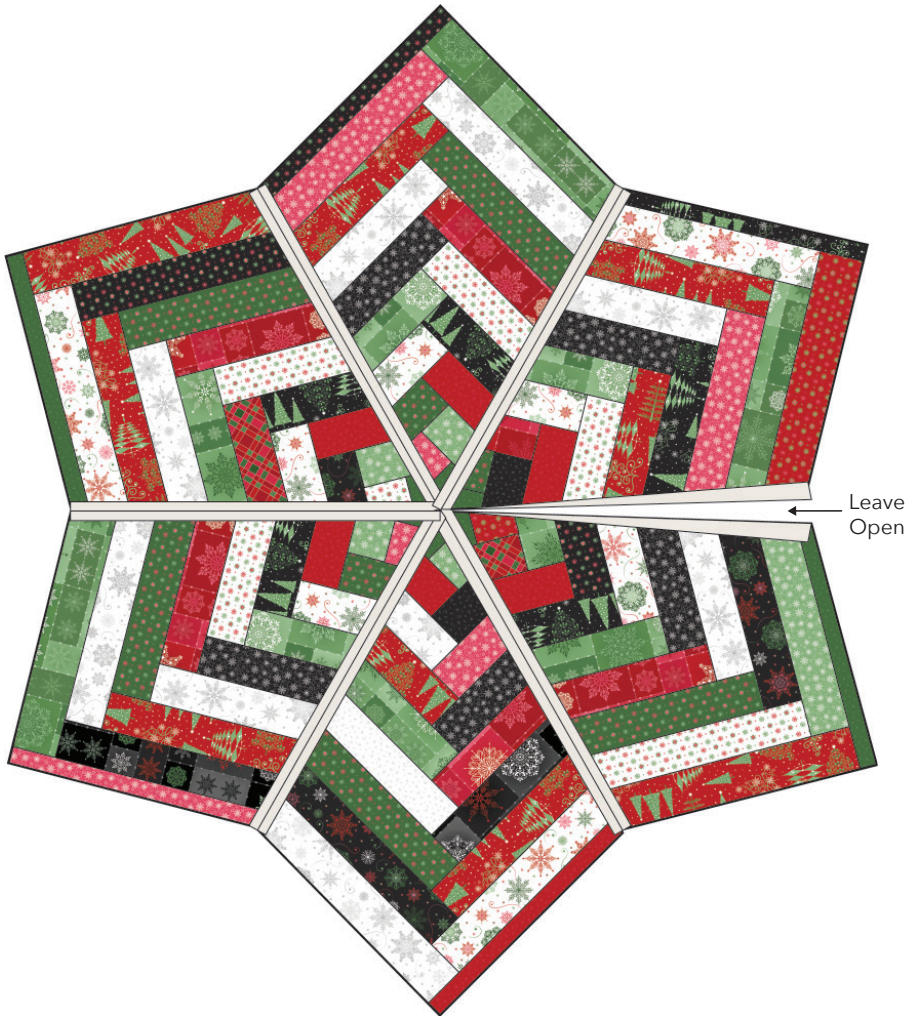
Repeat to make 6 wedge sections.



Make 6

Sew the wedge sections together

7. Sew the wedge sections together with the WRONG SIDES together so the seam is on top. Press seams open. Leave one seam open.



Finish the Seams

- Press $\frac{1}{4}$ " in toward the wrong side of the fabric on the long edges of each of the $1\frac{1}{2}$ " x 25" strips.
- Place a pressed strip on top of an exposed seam of the tree skirt. Top stitch down $\frac{1}{8}$ " away from the edge on both sides. Repeat on the remaining seams. Trim the extra strips.
- Measure a 4" circle and trace the shape in the center of the tree skirt. Trim to create the hole.



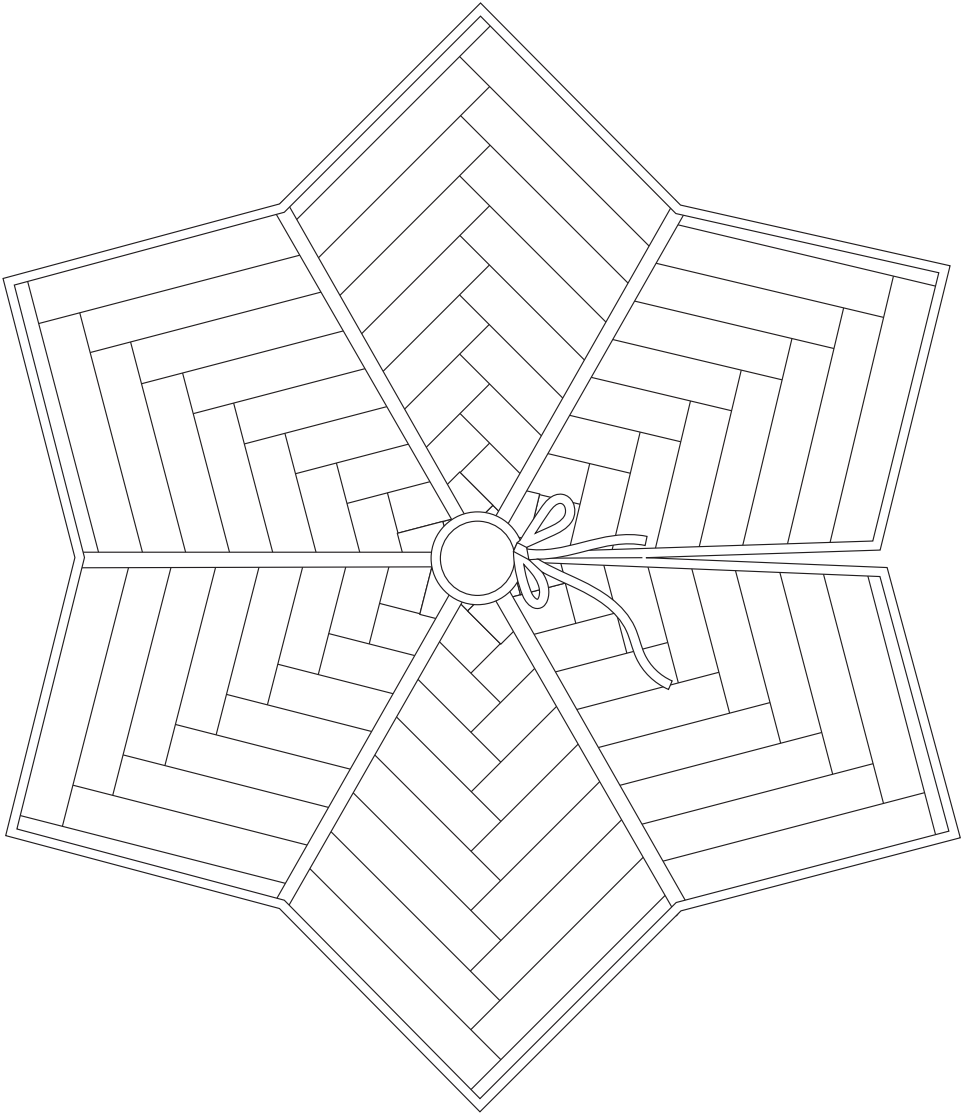
Add the Binding

11. Sew the 2-1/2" binding strips together, end to end. Sew the binding, right sides together, to the perimeter of the tree skirt. Do not sew the binding in the circle. Turn to the back and machine or handstitch in place.
12. With the remaining binding, cut a 50" length. Find the halfway point and pin it on the circle, opposite of the opening. Sew the binding on, right sides together, leaving two tails for ties. Turn to the back and sew the binding on by machine or by hand and fold the raw edges of the ties in and sew.



Quilt Planning Diagram

Use this diagram to plan your tree skirt..



Find more projects and inspiration at maywoodstudio.com

