

# COTTONWOOD STABLES

Free Project Sheet  
NOT FOR RESALE

by Color Principle



Quilt designed by Denise Russell.

## Quilt 2

Quilt size: 66" x 76.5"

Skill Level: Advanced Beginner

 **Henry Glass & Co., Inc.**



**facebook**

49 West 37th Street  
New York, NY 10018

Tel: 212-686-5194 - Fax: 212-532-3525

Toll Free: 800-294-9495

[www.henryglassfabrics.com](http://www.henryglassfabrics.com)

Please check our website for pattern updates  
before starting this project.



# COTTONWOOD STABLES - Fabrics in the Collection



3066P-88 Cottonwood Horse  
Panel 24" - Red



3057-66 Horse Scenic - Sage



3058-34 Cottonwood  
Allover - Tan



3059-34 Tack  
Equipment - Tan



3060-34 Horse Plaid  
Blanket - Tan



3061-88 Paisley  
Red



3062-77 Horse Toile  
Allover - Blue



3063-66 Horse  
Allover - Sage

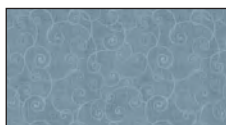


3064-17 Queen Anne's Lace  
Allover - Med. Blue



3065-88 Horseshoe  
Allover - Red

Selected fabrics from the  
Whimsy Basics Collection



8945-17  
Lt. Blue



8945-40  
Oyster



8945-75  
Colonial Blue

# COTTONWOOD STABLES - Quilt 2

Page 1

## Materials

*Yardages and cutting instructions are based on 42" of usable fabric width.*

1/4 yard 3058-34 Cottonwood Allover - Tan  
1/4 yard 3059-34 Tack Equipment - Tan  
1/4 yard 3063-66 Horse Allover - Sage  
1/3 yard 3064-17 Queen Anne's Lace Allover - Med. Blue  
3/8 yard 3060-34 Horse Plaid Blanket - Tan  
1/2 yard 3065-88 Horseshoe Allover - Red  
5/8 yard 3061-88 Paisley - Red  
3/4 yard 8945-17 Whimsy Basic - Lt. Blue  
1 yard 3062-77 Horse Toile Allover - Blue  
1-5/8 yards 8945-75 Whimsy Basic - Colonial Blue  
2-1/2 yards 8945-40 Whimsy Basic - Oyster  
4 yards 3059-34 Tack Equipment - Tan for backing

## Cut Fabrics

*Note: All strips are cut across the width of the fabric (WOF) from selvage to selvage unless otherwise indicated.*

### From 3058-34 Cottonwood Allover – Tan, cut:

\*One 5" x WOF strip. Sub-cut four 5" squares.

### From 3059-34 Tack Equipment – Tan, cut:

\*One 5" x WOF strip. Sub-cut six 5" squares.

### From 3063-66 Horse Allover – Sage, cut:

\*One 5" x WOF strip. Sub-cut five 5" squares.

### From 3064-17 Queen Anne's Lace Allover - Med. Blue, cut:

\*Four 2-1/8" x WOF strips. Sub-cut sixty 2-1/8" squares.

### From 3060-34 Horse Plaid Blanket – Tan, cut:

\*Seven 1-1/2" x WOF strips for border 2.

### From 3065-88 Horseshoe Allover – Red, cut:

\*Five 3-1/8" x WOF strips. Sub-cut sixty 3-1/8" squares; cut once diagonally. (A)

### From 3061-88 Paisley – Red, cut:

\*Eight 2-1/8" x WOF strips.

### From 8945-17 Whimsy Basic - Lt. Blue, cut:

\*Three 3-1/8" x WOF strips. Sub-cut thirty 3-1/8" squares.

\*Eight 1-1/2" x WOF strips for border 4.

### From 3062-77 Horse Toile Allover – Blue, cut:

\*Seven 4-1/2" x WOF strips for border 3.

### From 8945-75 Whimsy Basic - Colonial Blue, cut:

\*Four 2" x WOF strips. Sub-cut eighty 2" squares.

\*Five 5-3/8" x WOF strips. Sub-cut thirty 5-3/8" squares; cut once diagonally. (B)

\*Eight 2-1/2" x WOF strips for binding.

### From 8945-40 Whimsy Basic – Oyster, cut:

\*Two 2" x WOF strips. Sub-cut eight 2" x 9-1/2" strips.

\*Eight 2-1/8" x WOF strips.

\*Four 2-3/8" x WOF strips. Sub-cut sixty 2-3/8" squares; cut once diagonally. (C)

\*Three 3-1/8" x WOF strips. Sub-cut thirty 3-1/8" squares.

\*Three 3-1/2" x WOF strips. Sub-cut thirty 3-1/2" squares; cut **twice** diagonally. (D)

\*Two 9-1/2" x WOF strips. Sub-cut forty-one 2" x 9-1/2" strips (for a total of 49).

\*Six 2" x WOF strips for border 1.

## Assemble Blocks

*Note: Measurements include 1/4" seam allowances. Sew with right sides together unless otherwise stated. If no direction is specified, press the seam toward the darker fabric.*

1. Alternately, sew two 2-1/8" 8945-40 Whimsy Basic – Oyster strips to two 2-1/8" 3061-88 Paisley – Red strips. Repeat to make four strip sets (do not press open yet). Cross-cut the strip sets into sixty 2-1/8" segments. Press open. Sew the segments together four by four to make fifteen 7-1/8" units. Sew an 8945-75 Whimsy Basic - Colonial Blue B triangle to opposite sides of each unit and press open. Sew two more B triangles to the other corners, press open, and trim dog ears. Align the 1-1/4" line of a ruler with the seam just sewn and trim the triangle points, leaving a 1-1/4" Blue strip (*figure 1*, next page).

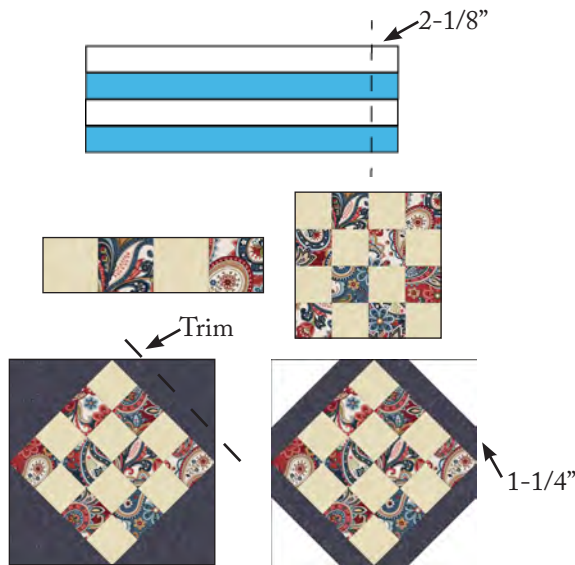


Figure 1 – Make 15.

2. Sew an 8945-40 Whimsy Basic – Oyster C triangle to a corner of a 2” 8945-75 Whimsy Basic – Colonial Blue square and press open. Sew another Oyster C triangle to the adjacent corner, press open, and trim the dog ears. Repeat to make sixty units. With right sides together, align each unit with the Blue strips of the Step 1 units, stitch and press open (figure 2). The blocks measure 9-1/2”.

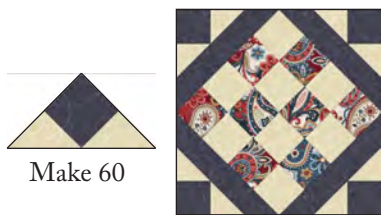


Figure 2 – Make (15) 9-1/2” blocks.

3. As in Step 2, sew the 8945-40 Whimsy Basic – Oyster D triangles to the 2-1/8” 3064-17 Queen Anne’s Lace Allover - Med. Blue squares. Similarly, add the 3065-88 Horseshoe Allover – Red A triangles to the other two corners of the Med. Blue squares. Make sixty 2-3/4” x 5” units (figure 3).



Figure 3 – Make (60) 2-3/4” x 5” units.

4. Draw a diagonal line from corner to corner on the wrong side of the thirty 3-1/8” 8945-40 Whimsy Basic – Oyster squares. With right sides together, layer the marked Oyster squares atop the 3-1/8” 8945-17 Whimsy Basic - Lt. Blue squares. Stitch 1/4” from each side of the diagonal line, cut on the drawn line, press each unit open with seams toward the darker fabric, and trim dog ears (figure 4). Make a total of sixty 2-3/4” half-square triangles (HST).

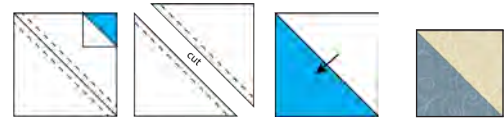


Figure 4 – Make (60) 2-3/4” units.

5. Sew a Step 3 unit to the right and one to the left of a 5” 3058-34 Cottonwood Allover – Tan square. Press the seams toward the center. Repeat with the 5” 3059-34 Tack Equipment – Tan and 3063-66 Horse Allover – Sage squares to make fifteen assorted center rows (figure 5).



Figure 5 – Make 15 assorted rows.

6. Sew a Step 4 HST to opposite sides of the remaining Step 3 units to make thirty rows. Press the seams away from the center. Noting fabric orientation, sew one row to the top and one to the bottom of the Step 5 center rows to make fifteen 9-1/2” blocks (figure 6, here and on next page). Press the seams open.







Figure 6 – Make (15) 9-1/2” blocks.

## Assemble Quilt Top

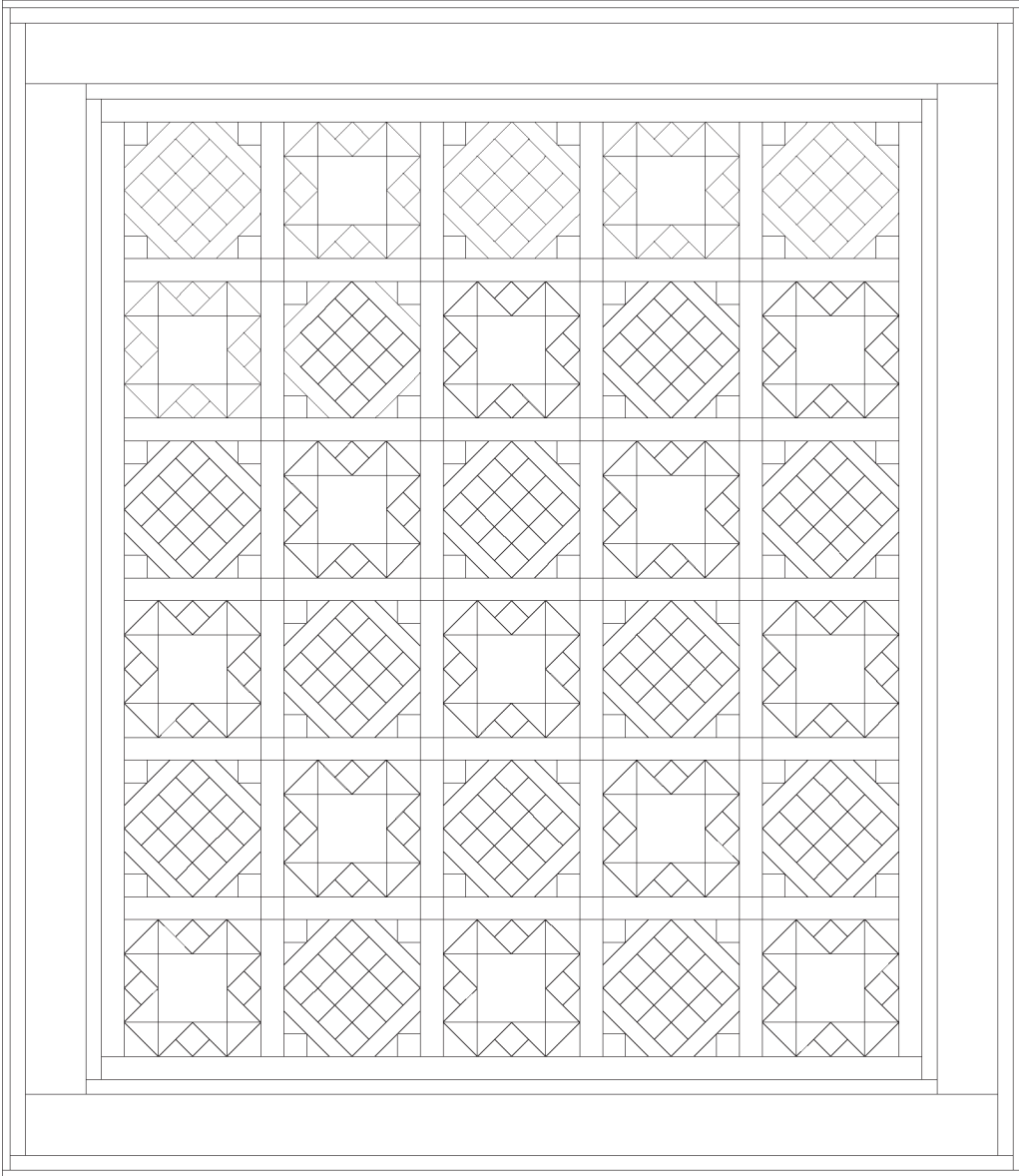
7. Referring to the quilt photo for block placement, lay out five blocks and four 2” x 9-1/2” 8945-40 Whimsy Basic – Oyster sashing strips in six rows, and join the blocks and sashing strips together in each row. Press the seams toward the sashing.
8. To make the horizontal sashing rows, sew together five Oyster sashing strips and four 2” 8945-75 Whimsy Basic - Colonial Blue cornerstone squares. Repeat to make five sashing strips. Press the seams toward the sashing.
9. Matching adjacent seams, sew block rows and horizontal sashing strips together. Press the seams in one direction.
10. For border 1, sew six 2” 8945-40 Whimsy Basic – Oyster border strips together end to end using diagonal seams. Measure the vertical length of the quilt top through the center

and cut two border strips that length. Sew one strip to each side of the quilt top. Measure the width of the quilt top through the center. Cut two border strips that length and sew one to the top and one to the bottom. Press the seams toward the borders.

11. Repeat Step 10 with the seven 1-1/2” 3060-34 Horse Plaid Blanket – Tan strips to make and add border 2.
12. Repeat Step 10 with seven 4-1/2” 3062-77 Horse Toile Allover – Blue strips to make and add border 3.
13. Repeat Step 10 with the eight 1-1/2” 8945-17 Whimsy Basic - Lt. Blue strips to make and add border 4.

## Finishing

14. Create a quilt sandwich with the batting between the quilt top and the backing. Pin or baste layers together, mark the quilting design, and quilt by hand or machine. When quilting is complete, remove pins or basting, and trim batting and backing even with raw edges of the quilt top.
15. Join the eight 2-1/2” 8945-75 Whimsy Basic - Colonial Blue binding strips together end to end using a diagonal seam to make one long strip. With wrong sides together, fold in half lengthwise and press. Sew binding to the edges of the quilt, mitering corners, and overlapping ends. Fold binding to the back of the quilt and stitch it in place by hand to finish.



Quilt Diagram