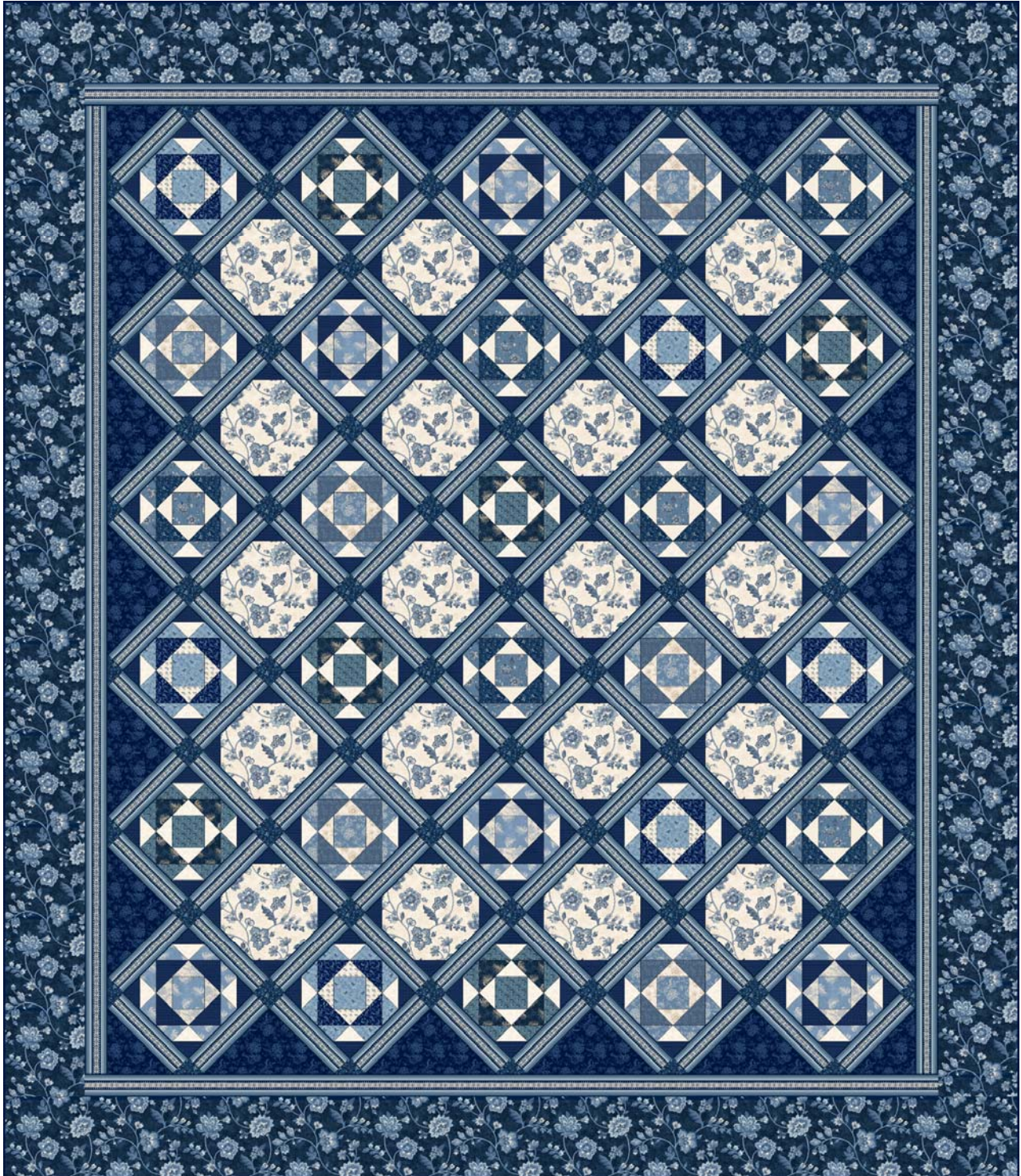


Genevieve

Fabric and Quilt by Carrie Quinn



89" x 103"



Genevieve Quilt

Fabric & Quilt by Carrie Quinn

Quilt Size Approx. 89" x 103"

Fabric Requirements

R100625-Cream	1-1/4 yds
R100625-Navy	2-5/8 yds
R100626-Blue	1/3 yd
R100626-Cream	1/8 yd
R100627-Navy	1/4 yd
R100628-Blue	1/3 yd
R100628-Cream	1/8 yd
R100628-Navy	2 yds
R100629-Blue	1/3 yd
R100629-Navy	5/8 yd
R100630-Blue	1/4 yd
R100630-Cream	5/8 yd
R100631-Blue	1/3 yd
R100631-Cream	1/8 yd
R100632-Cream	1/8 yd
R100632-Navy	1 yd
R100633-Blue	1/3 yd
R100633-Navy	1/4 yd
R100634-Blue	2-1/2 yds

Backing

44/45" wide 8-1/4 yds

108" wide 3-1/4 yds

Genevieve Quilt

by Carrie Quinn ~ Pieceful Gathering Quilt Shop

Finished Size 89" x 103"

At our shop, we use the Studio 180 rulers by Deb Tucker for many of our shapes. We find that oversizing and trimming our pieces to the correct size helps to make our shapes more accurate, and our quilts come together better. In this pattern I have used the Tucker Trimmer I, the Wing Clipper I, and the Square² Rulers. You can purchase any of these at your local quilt shop or at www.piecefulgathering.com.

Cutting Instructions:

Inner Border/Sashing Stripe

R100634-Blue

Start by cutting the Inner Borders from your Stripe fabric. Cut 4 strips the length of fabric. You will need the following, but I suggest waiting until your quilt center is complete and measure it to get the exact sizes that you need:

(2) 2 1/2" x 75 1/4"

(2) 2 1/2" x 85 3/8"

From the remainder cut Sashing Strips:

(120) 2 1/2" x 8 1/2"

Outer Border

R100625-Navy - Large Jacobean Floral
Cut or Rip (4) 8" x LOF strips. Measure completed quilt center before cutting length

Setting/Alternate Squares

R100625-Cream - Large Jacobean Floral
(20) 8 1/2" squares

Setting Triangles

R100628-Navy – Fancy Floral

(5) 13" Squares Cross-cut twice for side setting triangles

(2) 7" Squares Cross-cut once for corner setting triangles

* If using for **Binding**, cut (10) 2 1/2" strips, or use the extra yard to make bias binding (recommended).

Cornerstones & Blocks

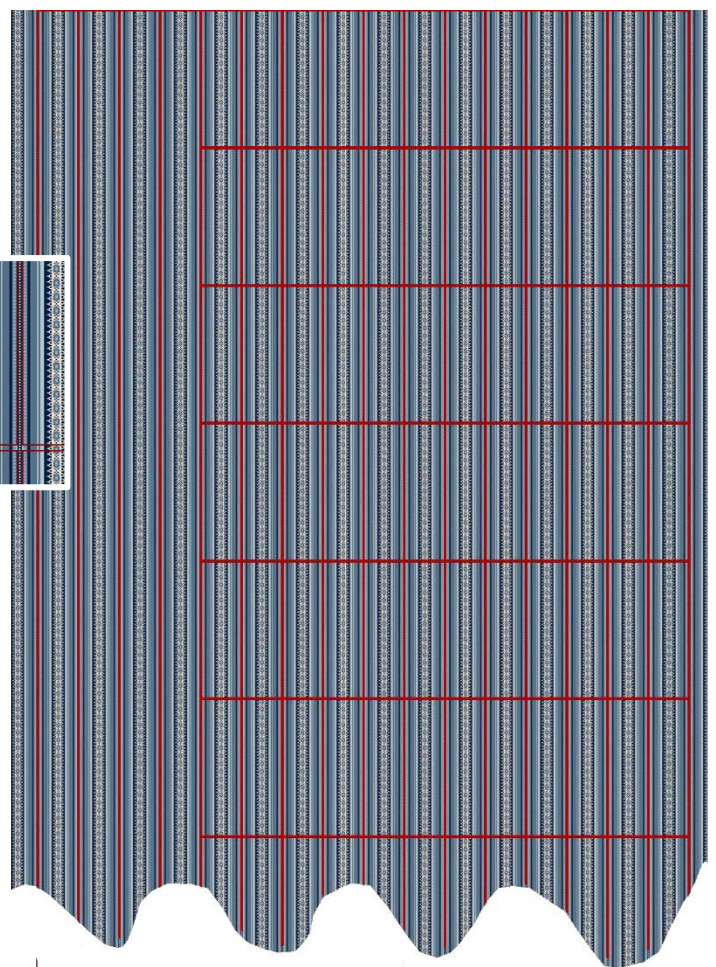
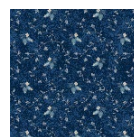
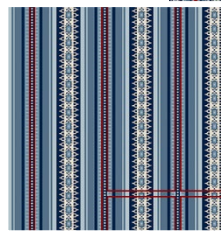
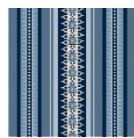
R100629 Navy – Rosebud Vine

Cut (5) 2 1/2" strips

Subcut (71) 2 1/2" squares for cornerstones

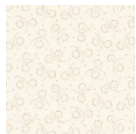
(1) 5 1/2" strip to use in blocks – see below*

Cutting Diagram for Striped Fabric. Carefully cut on the beaded row.



Cutting for Blocks

Creams:



R100630-Cream Puff Twig

(5) 3" Strips – Subcut (60) 3" squares for Half Square Triangles used in the corners of pieced blocks.

(1) 3 1/4" Strip – Subcut (12) 3 1/4" Squares. Cross Cut once for Center Square in a Square units



R100631 – Cream Leaf Shirting, R100628 – Cream Fancy Floral, R100632 – Cream Netting, R100626 – Cream Little Jacobean

Cut from each: (1) 3 1/4" Strip – Subcut (12) 3 1/4" Squares. Cross Cut once for Center Square in a Square units



Dark Blues:

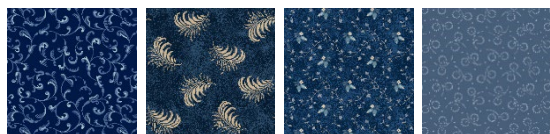


R100632 - Navy Netting,

(5) 3" Strips – Subcut (60) 3" squares for Half Square Triangles used in the corners of pieced blocks.

(1) 5 1/2" Strip – Subcut (6) 5 1/2" Squares for Flying Geese Units in blocks.

(5) 2 1/2" strips – Subcut (80) 2 1/2" squares for connecting corners on plain blocks.



R100627 – Navy Scrollwork, R100633 – Navy Feathers, R100629 – Navy Rosebud Vine, R100630* – Blue Puff Twig

Cut from each: (1) 5 1/2" Strip – Subcut (6) 5 1/2" Squares for Flying Geese Units in blocks

Medium Blues:



R100633 – Blue Feathers, R100628 – Blue Fancy Floral, R100626 – Blue Little Jacobean, R100631 – Blue Leaf Shirting, R100629 – Blue Rosebud Vine

Cut from Each:

(1) 3 3/8" strip - Subcut (6) 3 3/8" squares for block centers

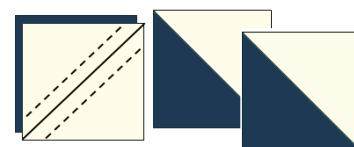
(2) 3" strips - Subcut (24) 3" squares for flying geese

Construction:

1. Make 20 Snowball Blocks using 8 1/2" Squares of the Cream Large Jacobean Floral and 2 1/2" Squares of Navy Netting. Draw a diagonal line on the wrong side of your 2 1/2" navy squares. Place on the corners of your 8 1/2" Cream Squares. Sew on the line and cut off the excess to complete the blocks. Press to the dark fabric.



2. Using the 3" squares of Cream Puff Twig and Navy Netting fabrics, make (120) 2" finished Half Square Triangle units for the corners of your pieced blocks. Draw a diagonal line on the wrong side of the light squares and place right sides together with the dark squares. Sew 1/4" on both sides of the line and cut apart on the line to create 120 half square triangles. Press to the dark fabric. Trim to 2 1/2" using the Deb Tucker Trimmer I.



Make 6 each of the following blocks, or create your own arrangements



3. Create 30 Square in a Square units for the centers of your pieced blocks using the $3\frac{3}{8}$ " squares of medium blue and $3\frac{1}{4}$ " Cross Cut Triangles of cream. Sew the cream triangles to the sides of the blue squares. The Triangles are oversized, so you will need to use your Square² to trim the unit to $4\frac{1}{2}$ " (4 " finished).

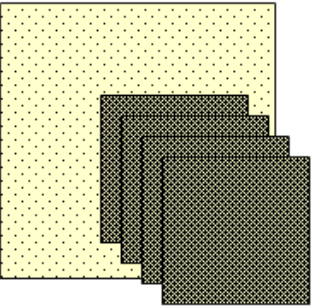
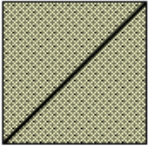
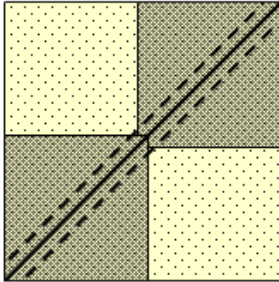
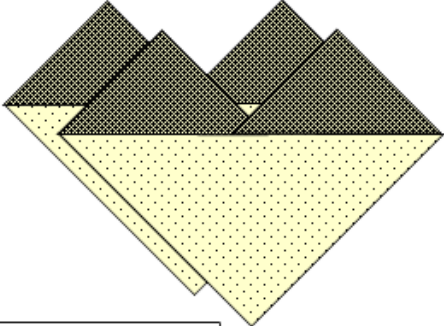


4. Make 30 sets of four matching Flying Geese units using $5\frac{1}{2}$ " Squares of Dark Blues and 3 " squares of Medium Blues using the instructions below and use your Deb Tucker Wing Clipper I ruler to trim to $2\frac{1}{2}$ " x $4\frac{1}{2}$ ":

For each set of four flying geese cut 1 large square and four small squares.

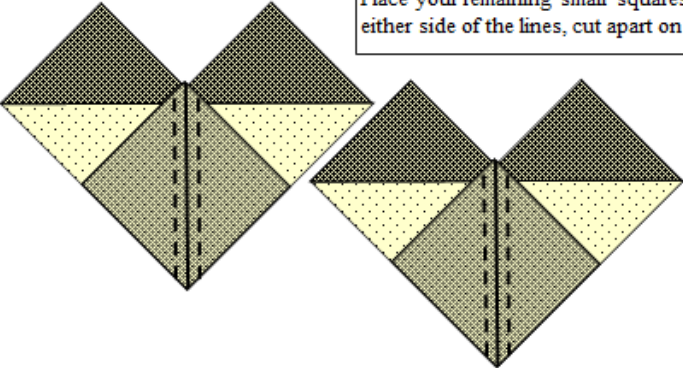
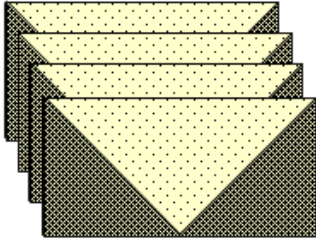
Draw a diagonal line on the wrong side of each of the four small squares.

Place your small squares on opposite corners of your large square so that the diagonal lines join to create one long diagonal line. Sew $\frac{1}{4}$ inch from both sides of the line and cut apart on the solid line. Press toward the small triangles to create a heart-like unit.

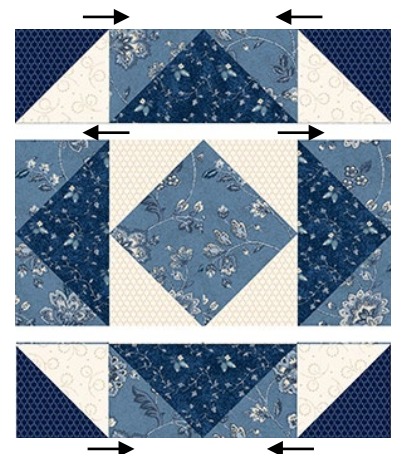





Place your remaining small squares on the corners of the heart units as shown. Sew on either side of the lines, cut apart on the solid line and press toward the small triangles.

You now have four identical flying geese units.

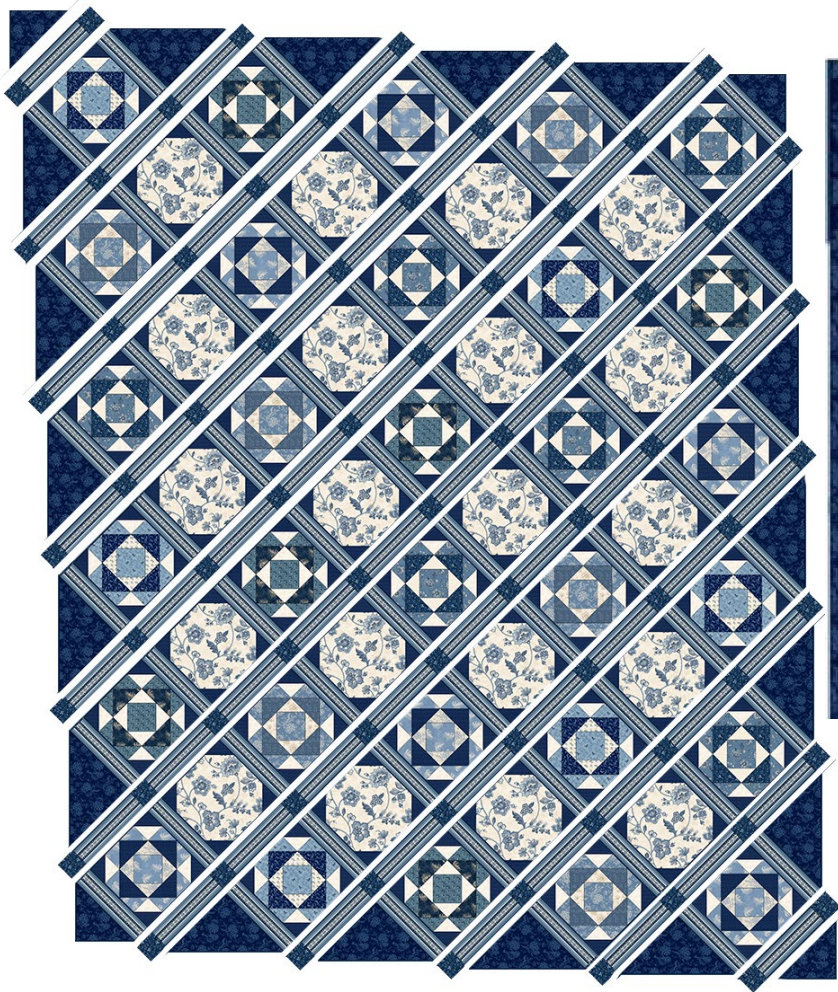



5. Complete the blocks – Sew three rows and then sew them together. Press in the direction of the arrows. You should have 30 pieced blocks that measure $8\frac{1}{2}$ " square to finish to 8 ".

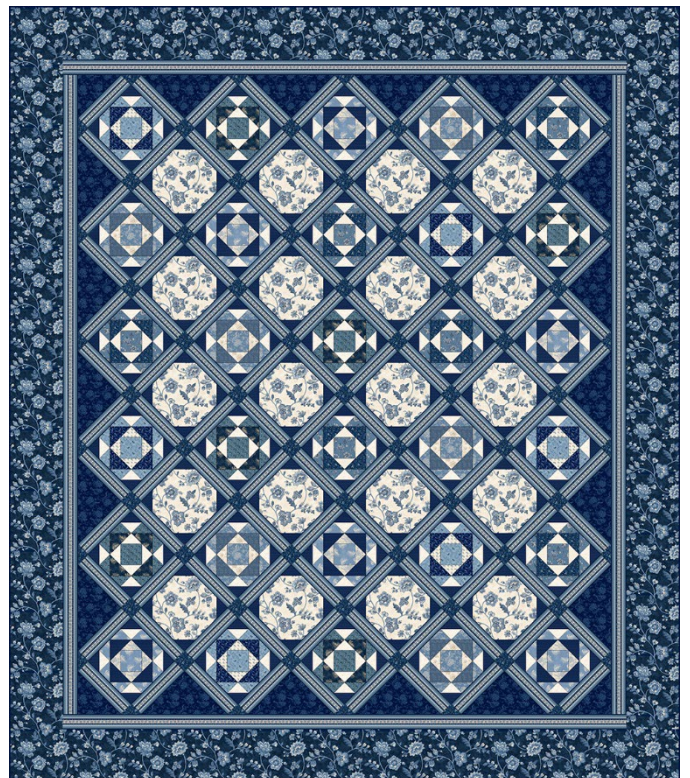


6. You can now put your quilt together. Following the Construction Diagram on the next page, construct rows of blocks with $8\frac{1}{2}$ " Stripe sashing strips, and rows of sashing strips with Navy Rosebud Vine cornerstone blocks. Put side setting triangles of the Navy Fancy Floral at the ends of the block rows and corner setting triangles in the corners. Please note that I have used squares of the cornerstone at the ends of the rows, and that the setting triangles are slightly oversized. Once your entire center is put together, trim to $\frac{1}{4}$ " outside of the corners of the blocks.

Put the center together and trim as shown.



7. Measure your completed quilt center on both sides and down the center. Average those numbers and cut your side stripe inner border strips to that length and sew to the sides of the quilt pinning carefully to ease as needed. Use the same method to add your top and bottom inner border strips.
8. Using the same method, measure and add your side Navy Jacobean border strips and then, finally, add your top and bottom border strips.
9. Quilt as desired and bind.



Pieceful Gathering Designs

Pieceful Gathering Quilt Shop

106 Northwest Highway

Fox River Grove, IL 60021

(847) 516-7911

www.piecefulgathering.com



*Pieceful Gathering Designs © Copyright 2023 * Carrie Quinn
All rights reserved. This pattern is for your personal use. Reproducing this pattern to sell, or
making quilts using this pattern for profit, is prohibited under American copyright laws.*