

Breathe


Riley Blake
DESIGNS™



Finished Size: 89" x 96"

Expressions

 = Intermediate

10/1/2023

Breathe

FINISHED QUILT SIZE 89" x 96"

Measurements include ¼" seam allowance.

Sew with right sides together unless otherwise stated.

GENERAL INSTRUCTIONS

Please check our website for any revisions before starting this project: www.rileyblakedesigns.com/pattern-updates.

This pattern requires a basic knowledge of quilting techniques and terminology. The quilt and block diagrams portrayed are virtual images. The layout and look of your project may differ when using actual fabric. Yardage calculated using a 42" usable width of fabric.

WOF = Width of Fabric

FABRIC REQUIREMENTS

Fabrics are from the Riley Blake Expressions Batiks Breathe collection & Hand Dyes collection where noted.

2½ yards Cloud (BTAP801-CLOUD)

1⅓ yards Silver (BTAP808-SILVER)

1½ yards Cloud Hand-Dyes (BTTH198-CLOUD)

1⅞ yards Chalice (BTAP819-CHALICE)

1 yard Slate (BTAP820-SLATE)*

⅝ yard each of: Winter (BTAP816-WINTER)

Dove (BTAP814-DOVE)

Platinum (BTAP817-PLATINUM)

½ yard each of: Ecru (BTAP804-ECRU)

Storm Cloud (BTAP818-STORMCLOUD)

⅜ yard each of: Powder (BTAP810-POWDER)

Vanilla Bean (BTAP803-VANILLABEAN)

⅓ yard each of: Nickel (BTAP813-NICKEL)

Lamb's Ear (BTAP806-LAMBSEAR)

¼ yard each of: Pale Gray Hand-Dyes (BTTH199-PALEGRAY)

Sky (BTAP809-SKY)

Flaxen (BTAP802-FLAXEN)

Sage (BTAP815-SAGE)

⅞ yard each of: Corn Silk (BTAP805-CORNSILK)

Laurel (BTAP807-LAUREL)

Ice Blue (BTAP811-ICEBLUE)

*includes Binding

OTHER SUPPLIES

2⅝ yards Wide Back fabric of your choice

Basic sewing supplies

Batting (97" x 104")

CUTTING INSTRUCTIONS

Please read all pattern instructions before cutting fabrics. Refer to the quilt image for fabric placement. Use a straight edge ruler and rotary cutter to cut your fabrics. Label the cuts as you go.



From Cloud, cut:

(10) 2½" x WOF for vertical sashing

From remaining WOF, cut:

(12) 2½" x 12½" strips A1

(9) 2½" x 6½" strips A2



From Silver, cut:

(1) 3" x WOF strip; subcut:

(8) 3" squares BX

(4) 1½" x WOF strips for horizontal inner borders

(15) 2½" x WOF strips; subcut:

(20) 2½" x 6½" spacer blocks B1

(32) 2½" x 5½" spacer blocks B2

(36) 2½" x 3½" spacer blocks B3



From Cloud, cut:

(1) 4" x WOF; subcut:

(4) 4" squares C1

(14) 3" x WOF; subcut:

(192) 3" squares CX



From Chalice, cut:

(10) 2½" x WOF strips for outer border

(2) 4½" x WOF strips; subcut:

(4) 4½" x 12½" color block rectangles D1



From Slate, cut:

(1) 5½" x WOF; subcut:

(4) 5½" x 7½" color block rectangles E1

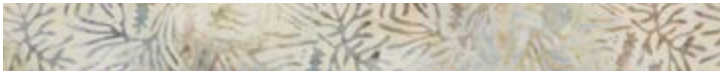
(10) 2½" x WOF for binding

Breathe



From Winter, cut:

- (1) 5½" × WOF strip; subcut:
(4) 5½" × 7½" color block rectangles F1
- (1) 3½" × WOF strip; subcut:
(4) 3½" × 8½" color block rectangles F2
- (1) 3" × WOF strip; subcut:
(8) 3" squares FX
- (3) 2½" × WOF strips; subcut:
(6) 2½" × 14½" strips F3



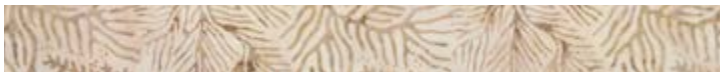
From Dove cut:

- (1) 6½" × WOF strip; subcut:
(4) 6½" × 8½" color block rectangles G1
- (1) 5½" × WOF strip; subcut:
(2) 5½" × 7½" color block rectangles G2
- (2) 5½" × 3½" color block rectangles G3
- (2) 3½" color block squares G4
- (1) 3" × WOF strip; subcut:
(8) 3" squares GX
- (1) 2½" × WOF strip; subcut:
(2) 2½" × 14½" strips G5



From Platinum cut:

- (2) 5½" × WOF strips; subcut:
(4) 5½" × 11½" color block rectangles H1
- (4) 4½" × 6½" color block rectangles H2
- (1) 3½" × WOF strip; subcut:
(4) 3½" × 9½" color block rectangles H3
- (1) 3" × WOF strip; subcut:
(8) 3" squares HX



From Ecru cut:

- (2) 5½" × WOF strips; subcut:
(6) 5½" × 8½" color block rectangles I1
- (1) 3" × WOF strip; subcut:
(8) 3" squares IX



From Storm Cloud cut:

- (1) 5½" × WOF strip; subcut:
(2) 5½" × 11½" color block rectangles J1
- (1) 4½" × WOF strip; subcut:
(4) 4½" × 6½" color block rectangles J2

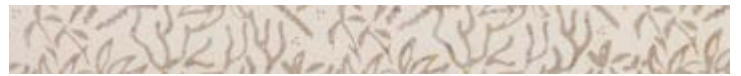
Storm Cloud (cont'd)

- (1) 3" × WOF strip; subcut:
(8) 3" squares JX



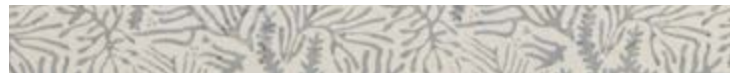
From Powder cut:

- (1) 4½" × WOF strip; subcut
(4) 4½" × 6½" color block rectangles K1
- (1) 3½" × WOF strip; subcut:
(4) 3½" × 9½" color block rectangles K2
- (1) 3" × WOF strip; subcut:
(8) 3" squares KX



From Vanilla Bean cut:

- (1) 5½" × WOF strip; subcut:
(4) 5½" × 8½" color block rectangles L1
- (2) 3½" × WOF strips; subcut:
(8) 3½" × 10½" color block rectangles L2



From Nickel cut:

- (2) 4½" × WOF strips; subcut
(4) 4½" × 12½" color block rectangles M1



From Lamb's Ear cut:

- (1) 6½" × WOF strip; subcut:
(4) 6½" × 4½" color block rectangles N1
- (4) 5½" × 3½" color block rectangles N2
- (1) 3" × WOF strip; subcut:
(8) 3" squares NX



From Pale Gray cut:

- (1) 4½" × WOF strip; subcut
(2) 4½" × 6½" color block rectangles O1
- (2) 3" squares OX
- (1) 3" × WOF strip; subcut:
(14) 3" squares OX



From Sky cut:

- (1) 6½" × WOF strip; subcut:
(4) 6½" × 8½" color block rectangles P1
- (4) 3" squares PX

Breathe



From Flaxen cut:

- (1) 5½" × WOF strip; subcut:
- (4) 5½" × 6½" color block rectangles Q1



From Sage cut:

- (1) 6½" × WOF strip; subcut:
- (2) 6½" color block squares R1
- (4) 6½" × 5½" color block rectangles R2



From Corn Silk cut:

- (1) 3" × WOF strip; subcut:
- (8) 3" squares SX



From Laurel cut:

- (1) 3½" × WOF strip; subcut:
- (2) 3½" × 10½" color block rectangles T1



From Ice Blue cut:

- (1) 3½" × WOF strip; subcut:
- (4) 3½" × 4½" color block rectangles U1

ASSEMBLY INSTRUCTIONS

Columns A – E

1. Construct 2 each of (5) columns A, B, C, D, & E. Columns A & E are 5½" wide; B & D, 3½" wide; and C, 6½" wide. Use the corresponding width of Silver spacer blocks for each column (B1, B2, or B3). Silver spacer blocks will *always* separate the taller color blocks in a column but *may or may not* begin or end a column. Sew top to bottom following the formulas and referring to the corresponding illustrations for placement.

Columns A: 5½" wide; use B2 to start and between all color blocks.

$$R2 + I1 + Q1 + L1 + I1 + L1 + Q1 + I1 + R2$$

Columns B: 3½" wide; use B3 at the beginning, end, and between all color blocks.

$$L2 + F2 + L2 + T1 + L2 + F2 + L2$$

Columns C: 6½" wide; use B1 *only* between color blocks.
H2 + G1 + K1 + P1 + N1 + R1 + N1 + P1 + K1 + G1 + H2

Columns D: 3½" wide; use B3 between color blocks and at the end.

$$G4 + H3 + N2 + K2 + U1 + U1 + K2 + N2 + H3 + G3$$

Columns E: 5½" wide; use B2 *only* between color blocks.

$$F1 + G2 + H1 + E1 + J1 + E1 + H1 + F1$$

There are now 10 columns, each measuring 82½" in length.



Breathe

- Sew together (2) M1 color blocks and (3) A1 strips in a row, alternating positions as shown to make an FA Column unit. Make (2), each measuring $14\frac{1}{2}'' \times 12\frac{1}{2}''$.



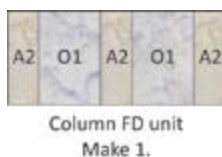
- Sew together (2) J2 color blocks and (3) A2 strips in a row, alternating positions as shown to make an FB Column unit. Make (2), each measuring $14\frac{1}{2}'' \times 6\frac{1}{2}''$.



- Sew together (2) D1 color blocks and (3) A1 strips in a row, alternating positions as shown to make an FC Column unit. Make (2), each measuring $14\frac{1}{2}'' \times 12\frac{1}{2}''$.



- Sew together (2) O1 color blocks and (3) A2 rectangles in a row, alternating positions as shown to make an FD Column unit measuring $14\frac{1}{2}'' \times 6\frac{1}{2}''$.



- Sew together from top to bottom (1) each of units FA, FB, and FC with (2) F3 strips in between. Sew another F3 strip to the bottom of unit FC, and a G5 strip to the top of unit FA to complete half of Column F. Make (2) Column F halves, each measuring $14\frac{1}{2}'' \times 38\frac{1}{2}''$.



- Turn (1) half of Column F upside down and sew the (2) halves together with the FD unit in between to complete Column F, measuring $14\frac{1}{2}'' \times 82\frac{1}{2}''$.



QUILT ASSEMBLY

See the Quilt Assembly Diagram on page 7 for visual reference.

- Using (5) of the $82\frac{1}{2}''$ vertical sashing strips and (1) each of Columns A through E, sew strips and columns together left to right in sequential order, alternating positions, and beginning with a vertical sashing strip to make a Left Side Half, measuring $32\frac{1}{2}'' \times 82\frac{1}{2}''$.
- Repeat Step 8, sewing the strips and columns right to left in order to make a Right Side Half.
- Sew the Left and Right Side Halves together with Column F in between to complete the Quilt Center, measuring $78\frac{1}{2}'' \times 82\frac{1}{2}''$.
- Sew (2) $1\frac{1}{2}''$ Silver WOF strips together end-to-end. Trim to the width of the quilt top as measured through the center of the quilt to make a Horizontal Inner Border. Make (2).
- Attach a Horizontal Inner Border to the top and bottom of the quilt top. Quilt top now measures $78\frac{1}{2}'' \times 85\frac{1}{2}''$. If you have different measurements, the issue will be addressed in Steps 18–22.

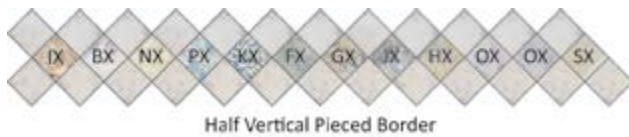
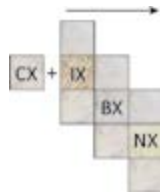
PIECED BORDER ASSEMBLY

- Sew (2) CX squares to opposite sides of (92) 3" squares with X in their labels (BX, FX, GX, HX, IX, JX, KX, NX, OX, PX, and SX) to make Pieced units, each measuring 8" × 3". Keep matching Pieced units together.



- Sew (12) Pieced units together left to right, offsetting them at the side by (1) square as shown, and in the order given, to make a Half Vertical Pieced Border. Sew a CX square to the remaining raw edge side of square IX. Make (4) Halves.

IX + BX + NX + PX + KX + FX + GX + JX + HX + OX + OX + SX



- Turn (1) Half Vertical Pieced Border unit 180° and sew it to another half, joining at the SX squares to make a Vertical Pieced Border. Make (2).



- Trim excess fabric away on all 4 sides of the Border, maintaining a ¼" seam allowance beyond all tips of the center color squares.
- Repeat Steps 14–16, using (11) Pieced units each to make (4) Half Horizontal Pieced Borders. Make (2) Horizontal Pieced Borders.



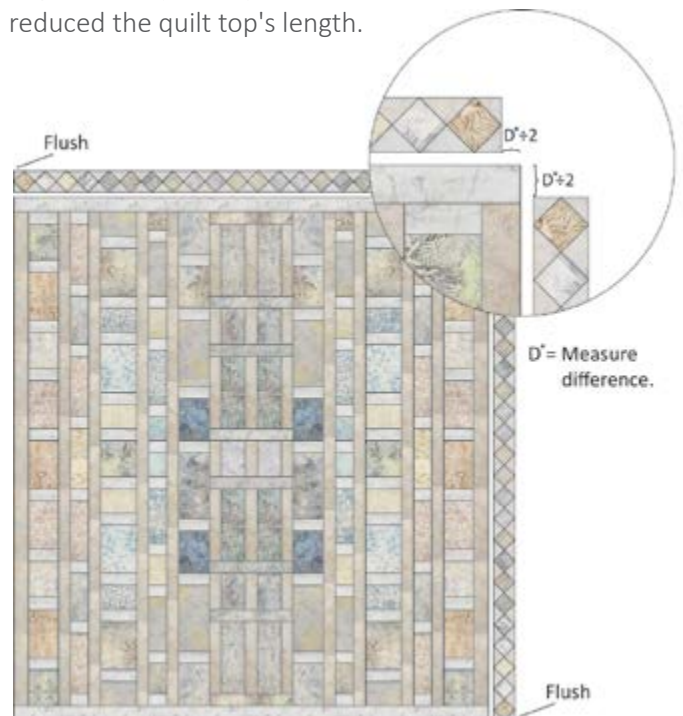
IX + BX + NX + KX + FX + GX + JX + HX + OX + OX + SX



ATTACH PIECED BORDERS (PB)

Before adding the Pieced Borders, the quilt center may need trimming to accommodate the PBs correctly.

- Check that both Horizontal PBs are the same length, and that the quilt's horizontal edges are the same width. Lay (1) Horizontal PB along the top edge and flush to the left side of the quilt top. Measure the difference between PB and quilt top, rounding up any fractions to the nearest ¼-inch. If the difference is ½" or more, divide it in half and trim each side of the quilt top by that amount. For instance, if the difference is ½-inch, trim ¼-inch off each side.
- Repeat Step 18, using a Vertical PB laying it next to the quilt's side, flush at the bottom edge. If the difference is a number that does not divide equally by 2, or will contain a fraction less than ⅛-inch, trim the borders by different amounts. For instance, if the difference is 2⅞", trim the top border 1½" and the bottom border 1⅜". Together they add up to the 2⅞" difference needed to reduce the quilt top's length.



- Sew a Vertical PB to each side of the quilt.
- Sew a C1 square to each end of the Horizontal PBs. Trim the squares to the same height as the PB.
- Sew the Horizontal Pieced Borders to the top and bottom of the quilt. The corner square will hang beyond the edge of the quilt. Trim the corner squares flush to the quilt's sides once the Horizontal PBs are attached. The quilt now measures 85½" × 92½".

Breathe

FINISHING INSTRUCTIONS

OUTER BORDER

23. Sew (5) 2½" Chalice Outer Border strips together end-to-end. Measure the length of the quilt top and cut (2) strips to that measurement. Sew the 2 strips to the sides of the quilt.
24. Repeat Step 23, measuring the width of the quilt top and cut (2) Horizontal Outer Borders. Sew the 2 strips to the top and bottom of the quilt. Quilt now measures 89½" × 96½".

Finish quilt by layering the quilt top, batting, and backing. Baste quilt layers together and quilt as desired. Bind with the Slate strips.

Enjoy and share your quilt using the hashtags #expressionsbatiksfabric, #breathequilt, #rileyblakedesigns and #iloverileyblake.

QUILT LAYOUT DIAGRAM

