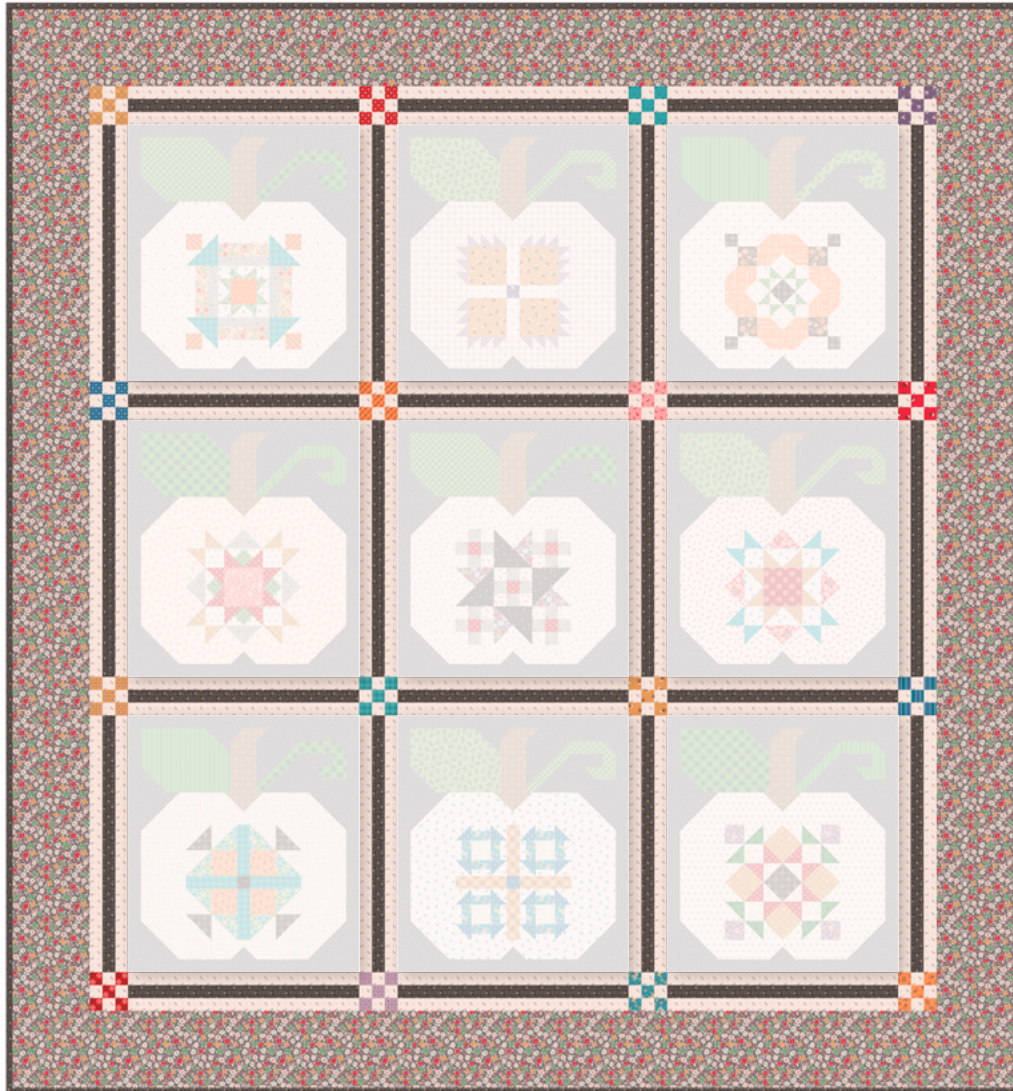


Autumn Pumpkin Seeds Quilt



Setting Instructions



78" x 84"



Autumn Pumpkin Seeds Quilt

Designed by Lori Holt of Bee in my Bonnet

FINISHED QUILT SIZE 78" x 84"

WOF = Width of Fabric, LOF = Length of Fabric

Please read through all the directions first before starting. Assume $\frac{1}{4}$ " seam allowance. Yardage is based on a 42" width of fabric.

This guide requires a basic knowledge of quilting techniques and terminology. The quilt and block diagrams portrayed are virtual images. The layout and look of your project may differ when using actual fabric.

These instructions are intended to be used in conjunction with all nine of Lori Holt's Autumn Quilt Seeds™ Patterns, a pattern series featuring nine different quilt blocks. Each pattern is a great standalone quilt block, or combine all nine to create this quilt or another project of your choosing. Enjoy and share your quilt using the hashtags #autumnfabric, #quiltseeds, #beeinmybonnet, #rileyblakedesigns, and #iloverileyblake.

FABRIC REQUIREMENTS

Fabrics are from the Autumn fabric collection by Lori Holt of Bee in my Bonnet for Riley Blake Designs.

2 $\frac{1}{4}$ Yards Milk Can Cosmos (C14659-MILKCAN)

1 $\frac{1}{4}$ Yards Milk Can Leaves (C14662-MILKCAN)

*includes binding

1 $\frac{1}{4}$ Yards Latte Maple (C14669-LATTE)

10" square each:

Marigold Plaid (C14651-MARIGOLD)

Raindrop Berries (C14652-RAINDROP)

Cider Blossom (C14654-CIDER)

Riley Red Blossom (C14654-RILEYRED)

Coral Posy (C14655-CORAL)

Raindrop Bouquet (C14656-RAINDROP)

Denim Dots (C14657-DENIM)

Schoolhouse Dots (C14657-SCHOOL)

Pumpkin Gingham (C14660-PUMPKIN)

Raindrop Homespun (C14661-RAINDROP)

Plum Leaves (C14662-PLUM)

Yam Perennial (C14664-YAM)

Denim Stripe (C14665-DENIM)

Cider Sunflowers (C14666-CIDER)

Taffy Sunflowers (C14666-TAFFY)

Schoolhouse Kerchief (C14668-SCHOOL)

Suggested Backing:

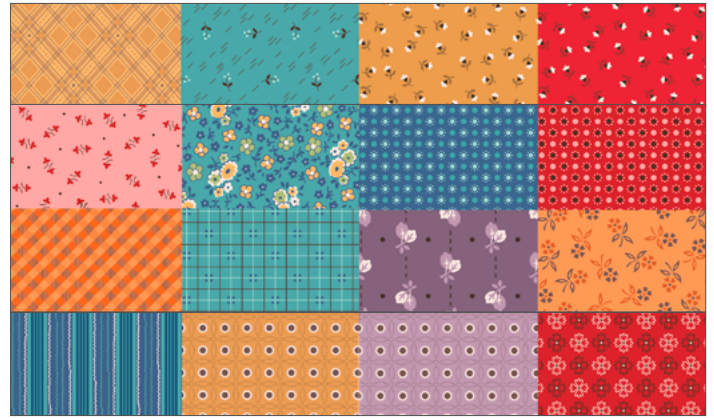
2 $\frac{1}{2}$ Yards Latte Words Wide Back (WB14674-LATTE)

NOTIONS/SUPPLIES

86" x 92" batting

CUTTING REQUIREMENTS

Label fabrics as you cut using the letter labels provided.



From each of (16) prints, cut:

- (5) $1\frac{1}{2}$ " x $1\frac{1}{2}$ " squares. Label as A.



Milk Can Cosmos (C14659-MILKCAN)

- Cut (4) $6\frac{1}{2}$ " x LOF strips; subcut:
 - (2) $6\frac{1}{2}$ " x $72\frac{1}{2}$ " side borders.
 - (2) $78\frac{1}{2}$ " x $6\frac{1}{2}$ " top/bottom borders.



Milk Can Leaves (C14662-MILKCAN)

- Cut (9) $2\frac{1}{2}$ " x WOF binding strips.
- Cut (12) $1\frac{1}{2}$ " x WOF strips. Label as D.

Autumn Pumpkin Seeds Quilt Quilt Seeds™



Latte Maple (C14669-LATTE)

- Cut (24) 1 ½" × WOF strips. Label as C.
- Cut (3) 1 ½" × WOF strips. Subcut:
(64) 1 ½" × 1 ½" squares. Label as B.

QUILT ASSEMBLY

Use the cover image, corresponding diagrams, cutting list, and Quilt Layout Diagram on page 3 for reference.

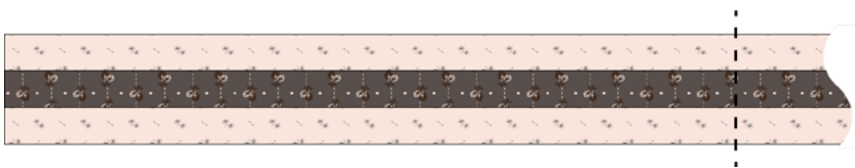
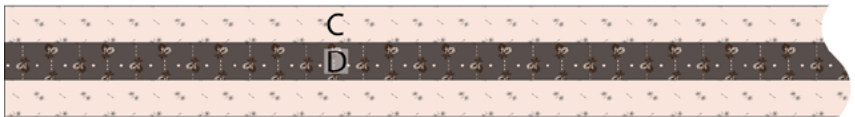
Sew with right sides together unless otherwise stated. Press all seams open unless otherwise stated. Dimensions listed in steps are unfinished sizes unless otherwise stated.

1. Arrange (5) matching A squares and (4) B squares as shown. Sew the units together. The Nine-Patch Unit should measure 3 ½" × 3 ½".



2. Repeat Step 1 to make a total of (16) Nine-Patch Units.

3. Sew (2) C strips and (1) D strip together lengthwise to make a strip set. The strip set should measure 3 ½" × WOF unfinished. Repeat to make a total of (12) strip sets.
4. Subcut (12) 3 ½" × 20 ½" Units and (12) 3 ½" × 18 ½" Units from the strip sets.



5. Arrange the (16) Nine-Patch Units, (12) 3 ½" × 18 ½" Units, (12) 3 ½" × 20 ½" Units, and (9) Quilt Seeds Blocks as shown. Sew the units and blocks together in rows. Sew the rows together to form the Quilt Center. The Quilt Center should measure 66 ½" × 72 ½".
6. Sew the (2) Side Borders to the left and right of the Quilt Center. The quilt should measure 78 ½" × 72 ½".
7. Sew the Top/Bottom Borders to the Quilt Center to complete the quilt top. The quilt top should measure 78 ½" × 84 ½".

FINISHING

Finish the quilt by layering the quilt top, batting, and backing. Quilt as desired and finish with the 2 ½" Autumn Milk Can Leaves binding strips.

Stay up-to-date on all Lori Holt happenings and projects:

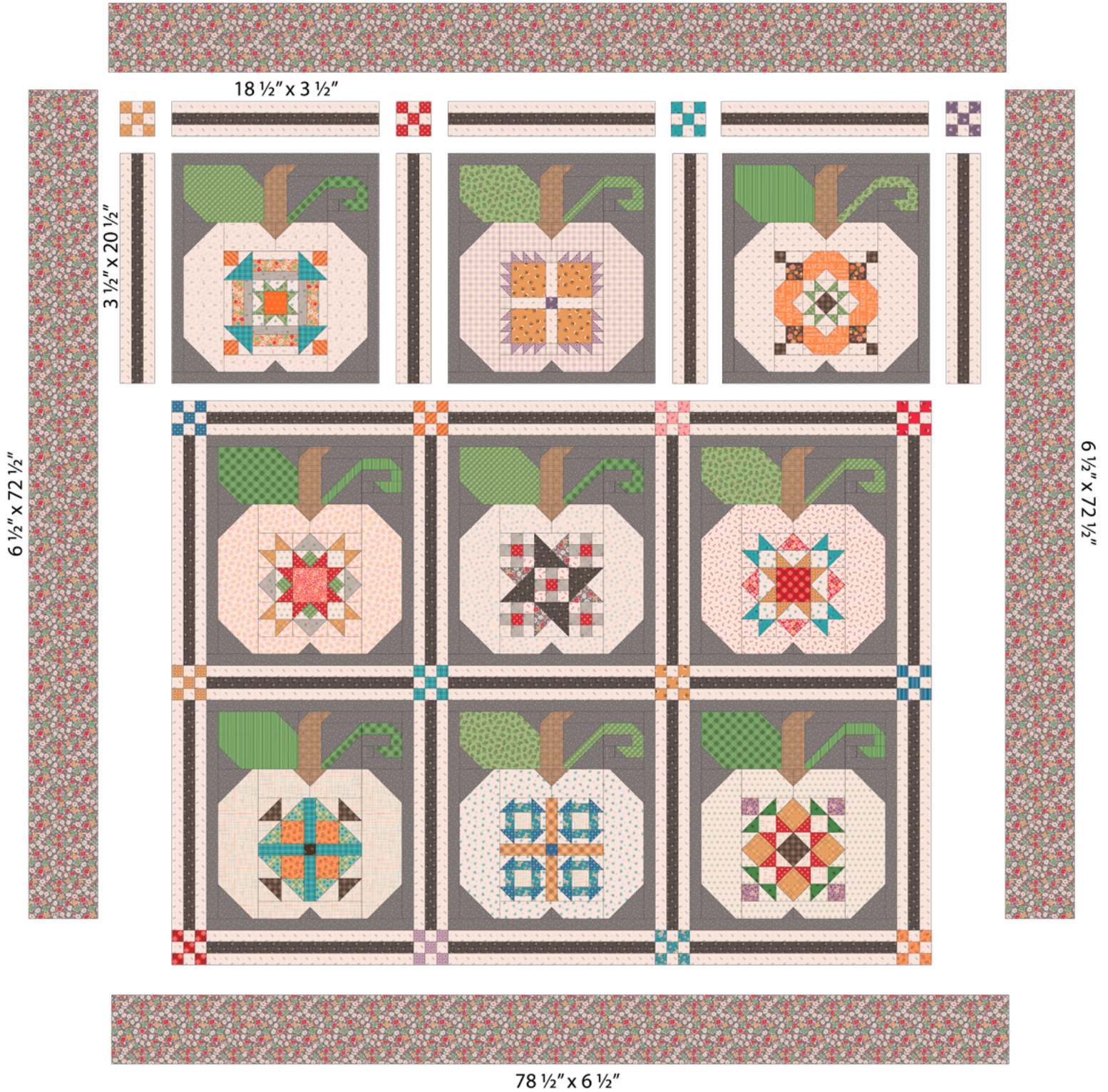
- Visit Lori's Blog at BeInMyBonnetCo.blogspot.com
- Subscribe to the Lori Holt YouTube channel
- Follow her on Instagram at @beelori1

#autumnfabric, #quiltseeds, #beinmybonnet, #rileyblakedesigns, #loverileyblake

Autumn Pumpkin Seeds Quilt Quilt Seeds™

Quilt Layout Diagram

78 1/2" x 6 1/2"



Autumn Quilt Seeds™ by Lori Holt of Bee in my Bonnet

Pumpkin No. 1



Pumpkin No. 2



Pumpkin No. 3



Pumpkin No. 3

Pumpkin No. 5

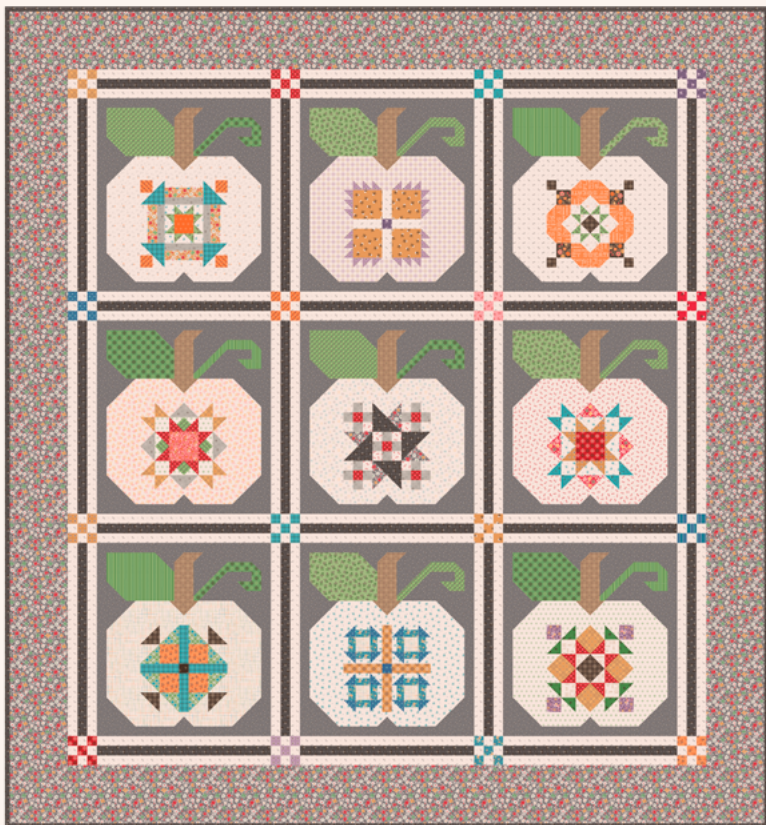


Pumpkin No. 4



Pumpkin No. 6

Autumn Quilt Seeds™ Sampler



Pumpkin No. 7



Pumpkin No. 8



Pumpkin No. 9